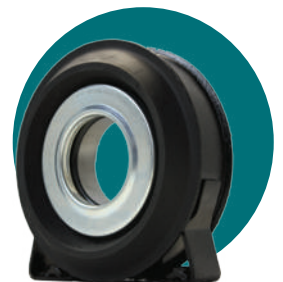
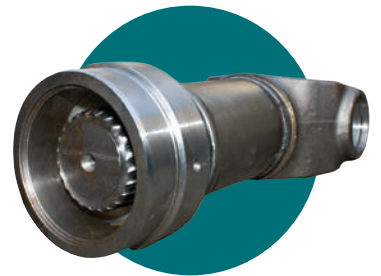


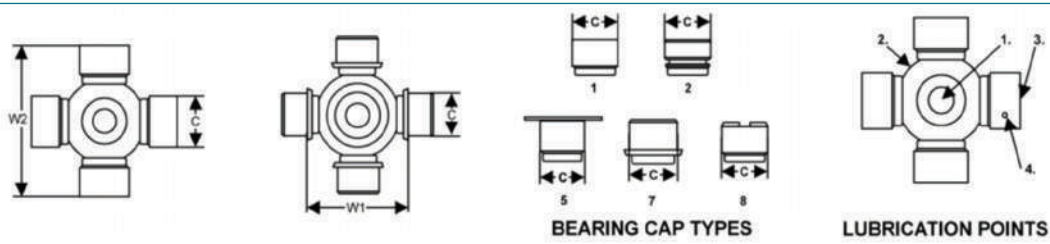
EUROPEAN CATALOGUE

branches BRISBANE
BROKEN HILL
COBAR
DUBBO
MACKAY
MELBOURNE
NEWCASTLE
PERTH
SYDNEY
TOWNSVILLE
TASMANIA





European - General Dimension Data



Dimensional Data

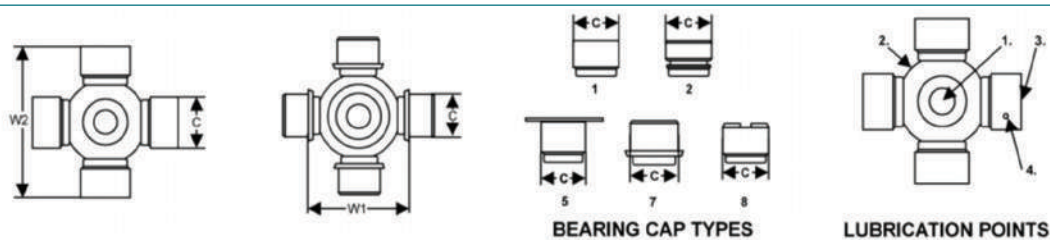
ELBE

Uni Cap Ø (C)	Uni Width (W2)	Uni Width Type	Cap Qty	Cap Type	Fig	Compact Series	Part #	Lube	Notes
14.00	36.00	W2	41		21		802037		204
17.00	41.00	W2	41		21		802024		105
19.00	48.00	W2	41		21		U901		106
22.00	58.00	W2	41		21		802004		107
22.00	58.90	W2	41		21		U166		473.30
26.00	69.80	W2	41		21		U741		287.00
28.00	71.50	W2	41		21		802005		109 - Old
28.50	70.90	W2	41		21		802039		109 - New
30.00	81.70	W2	41		21		U742		287.10
30.00	81.70	W2	41		21		U742		287.10
30.00	83.00	W2	41		21		802006		110
30.00	83.00	W2	41		21		802006		110
35.00	97.00	W2	41		21		802040		112
38.00	106.00	W2	41		24		802022.011		113
42.00	123.00	W2	41		21		802011		115
45.00	131.00	W2	41		21		802012		116
53.00	135.00	W2	41		21		U761		117

GWB

Uni Cap Ø (C)	Uni Width (W2)	Uni Width Type	Cap Qty	Cap Type	Fig	Compact Series	Part #	Lube	Notes
27.00	74.50	W2	41		22	2015	K5A727		687.15
30.20	81.80	W2	41		21	20	802038		687.20
34.90	92.00	W2	41		21	2025	K5A729		687.25
34.93	106.38	W2	41		22		K5A730		687.30
35.00	96.80	W2	41		21		U743		587.10
42.00	104.50	W2	41		21		K5A622		587.15
42.00	119.40	W2	41		21	2035	802054		687.35
47.63	135.17	W2	41		21	2040	802043		687.40
52.00	133.00	W2	41		21		U756		587.30
52.00	147.20	W2	41		21	2045	802029		687.45
57.00	152.00	W2	41		21	2055	U763		687.55
59.00	167.40	W2	41		22	2060	802041		687.60
65.00	144.00	W1	47		52		5.316X		190.50
65.00	172.00	W2	41		21	2065	K5A643		587.48 / 687.65
74.00	154.00	W1	47		52		K5A626		190.55

European - General Dimension Data



Dimensional Data

74.00	217.00	W2	41	21	K5A708	587.55
83.00	139.00	W1	47	51	5.371X	392.55
95.00	139.00	W1	47	51	K5A715	390.65
95.00	160.00	W1	47	52	5.372X	292.60
95.00	190.00	W1	47	52	K5A628	190.65
95.00	250.00	W2	41	21	U3285	285
110.00	210.00	W1	47	52	K5A629	190.70
120.00	235.00	W1	47	52	5.368X	190.75
130.00	262.00	W1	47	52	5.369X	190.80

Mercedes

Uni Cap Ø (C)	Uni Width (W2)	Uni Width Type	Cap Qty	Cap Type	Fig	Compact Series	Part #	Lube	Notes
34.00	89.00	W2	41		21		802045		MER802045
38.00	89.20	W2	412				802008	NON	MER802008
68.00	95.00	W1	42		11		801001		385.60
68.00	95.00	W1							MER801001
68.00	123.00	W1	41		11		801002		385.68

Scania

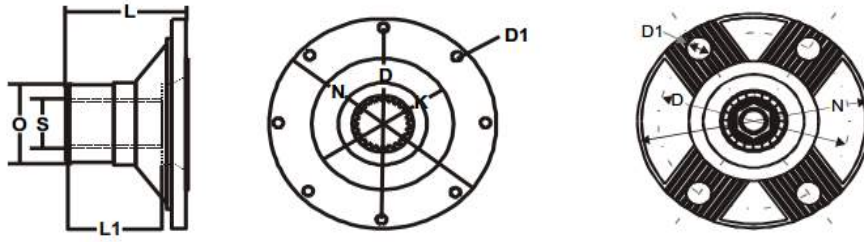
Uni Cap Ø (C)	Uni Width (W2)	Uni Width Type	Cap Qty	Cap Type	Fig	Compact Series	Part #	Lube	Notes
38.00	148.00	W2	41		21		802009		P30 / T51
50.00	164.00	W2	41		22		U386		T70
65.00	190.00	W2	41		21		802036		P600

European

Uni Cap Ø (C)	Uni Width (W2)	Uni Width Type	Cap Qty	Cap Type	Fig	Compact Series	Part #	Lube	Notes
---------------	----------------	----------------	---------	----------	-----	----------------	--------	------	-------

European Generic

Splined Companion Flange



Splined Companion Flange

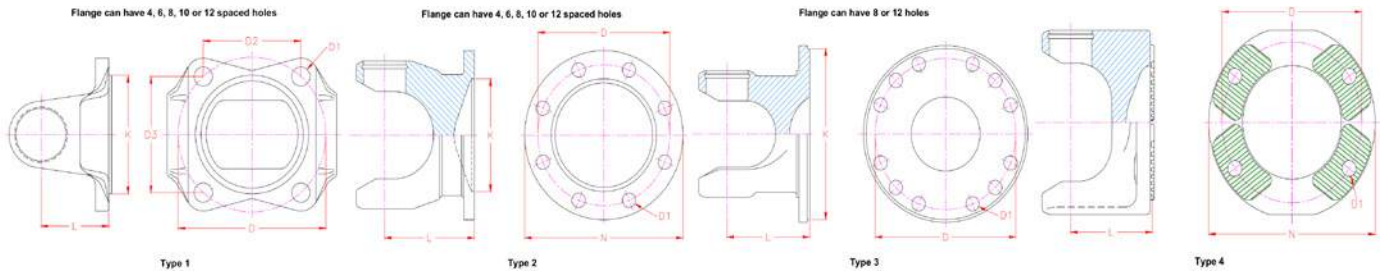
GWB Series: 587.36 Suits:U813 57.00 x 144.00

Bore (S)	Qty (S)	OD (N)	Spigot (K)	PCD (D)	Hole (D1)	Qty (D1)	(D2)	(D3)	FC (L)	DTH (L1)	Hub (O)	Part #	Notes
60.00	22	180.00	110.00									587.36.1.1800000	
60.00	22	180.00		150.00	15.00	4			73.10	97.50	90	587.36.1.180415	KV

GWB Series: 587.42 / 687.55 Suits:U763 57.00 x 152.00

Bore (S)	Qty (S)	OD (N)	Spigot (K)	PCD (D)	Hole (D1)	Qty (D1)	(D2)	(D3)	FC (L)	DTH (L1)	Hub (O)	Part #	Notes
49.78	10	180.00		150.00	15.00	4	86.00	122.90				587.42.1.5141KV	
49.98	10	180.00		150.00	15.00	4			76.20	85.00	57.1	587.42.1.3291KV	1.968"x 10 Spline
51.41	39	180.00		150.00	15.00	4			76.20	85.00	58.7	587.42.1.6371KV	2.024"x 39 Spline
60.71	46	180.00		150.00	15.00	4			73.00	100.00	82.5	587.42.1.3201KV	1710 Eq. 6.4.5931 / 1810 Eq. 6.5.4.3201
65.38	20	180.00		150.00	15.00	4	86.00	122.90				587.42.1.3361KV	
69.85	10	180.00		150.00	15.00	4			88.80	110.00	76.2	587.42.1.1901KV	1710 Eq. 6.4.4551 / 1810 Eq. 6.5.4.1901
69.85	10	180.00		150.00	15.00	4			95.20	110.00	76.2	587.42.1.3491KV	Slinger 231616
70.96	54	180.00		150.00	15.00	4				110.00	69.8	587.42.1.4631KV	2.794"x 54 spline

Flange Yoke



Flange Yoke

ELBE Series: 105 Suits:802024 17.00 x 41.00

OD (N)	Spigot (K)	PCD (D)	Hole (D1)	Qty (D1)	(D2)	(D3)	FC (L)	Part #	Type	Notes
58.00	30.00	47.00	5.00	4			30.00	105.2.5845	2	

ELBE Series: 106 Suits:U901 19.00 x 48.00

OD (N)	Spigot (K)	PCD (D)	Hole (D1)	Qty (D1)	(D2)	(D3)	FC (L)	Part #	Type	Notes
65.00	35.00	52.00	6.10	6			32.00	106.2.6546	2	

ELBE Series: 107 Suits:802004 22.00 x 58.00

OD (N)	Spigot (K)	PCD (D)	Hole (D1)	Qty (D1)	(D2)	(D3)	FC (L)	Part #	Type	Notes
75.00	42.00						36.00	107.2.7500	2	Blank 30 Degree
75.00	42.00	62.00	6.10	6			36.00	107.2.7566	2	30 Degree

ELBE Series: 109 - New Suits:802039 28.50 x 70.90

OD (N)	Spigot (K)	PCD (D)	Hole (D1)	Qty (D1)	(D2)	(D3)	FC (L)	Part #	Type	Notes
100.00	57.00	84.00	8.00	6			42.00	109.2.10068	2	Din100
90.00	47.00	74.50	8.00	4			42.00	109.2.9048	2	DIN

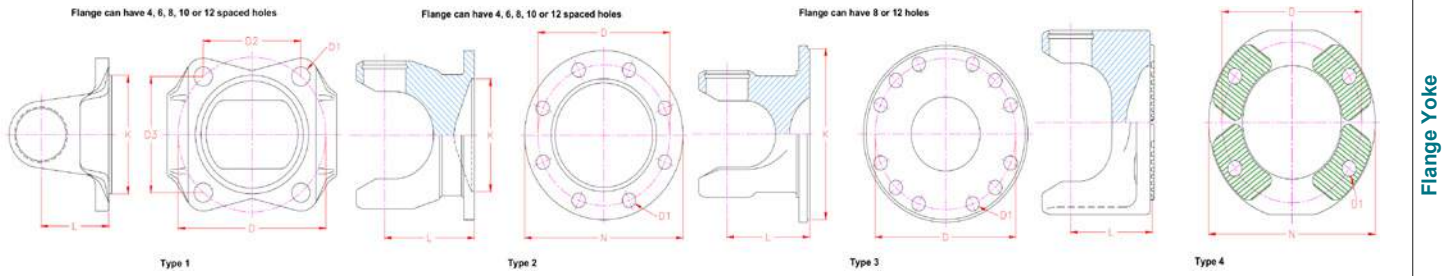
ELBE Series: 110 Suits:802006 30.00 x 83.00

OD (N)	Spigot (K)	PCD (D)	Hole (D1)	Qty (D1)	(D2)	(D3)	FC (L)	Part #	Type	Notes
120.00	75.00	101.50	8.00	8			46.00	110.2.12088	2	
100.00		84.00	8.00	6			46.00	110.2.10068	2	
97.00	60.30	79.30	9.50	4	51.00	60.80	46.00	110.2.1310	1	1310 Flange Face 18 Degree

ELBE Series: 112 Suits:802040 35.00 x 97.00

OD (N)	Spigot (K)	PCD (D)	Hole (D1)	Qty (D1)	(D2)	(D3)	FC (L)	Part #	Type	Notes
120.00	75.00	101.50	8.00	8			60.00	112.2.12088	2	20 Degree
120.00	75.00	101.50	8.00	8			75.00	112.2.12088.1	2	35 Degree
150.00	90.00	130.00	10.10	8			60.00	112.2.150810	2	DIN 150
116.00	69.80	95.20	11.10	4			60.00	112.2.1410	1	20 Degree 1410 Flange Face
146.00	95.30	120.70	12.70	4	77.50	92.40	60.00	112.2.1510	1	20 Degree 1510 Flange Face

Flange Yoke



Flange Yoke

GWB Series: 687.15 Suits:K5A727 27.00 x 74.50

OD (N)	Spigot (K)	PCD (D)	Hole (D1)	Qty (D1)	(D2)	(D3)	FC (L)	Part #	Type	Notes
100.00	57.00	84.00	8.00	6			48.00	687.15.2.10068	2	DIN
90.00	47.00	74.50	8.00	4			50.00	687.15.2.90048	2	DIN
87.00	57.10	69.80	8.00	4	44.90	53.50	43.00	687.15.2.1140	1	1140 Spicer also suit Nissan
97.00	60.30	79.30	9.50	4	51.00	60.80	43.00	687.15.2.1300	1	1300/10 Spicer face

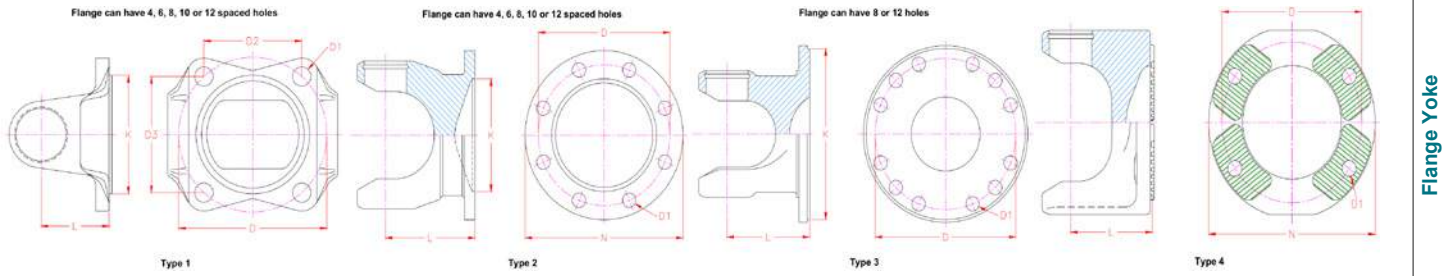
GWB Series: 687.20 Suits:802038 30.20 x 81.80

OD (N)	Spigot (K)	PCD (D)	Hole (D1)	Qty (D1)	(D2)	(D3)	FC (L)	Part #	Type	Notes
129.00	48.00	107.90	12.80	4	76.30	76.30	45.00	687.20.2.0500	1	Ford Transit
129.00	50.80	107.90	12.80	4	76.20	76.20	45.00	687.20.2.0600	1	Ford Transit
100.00	57.00	84.00	8.20	6			58.00	687.20.2.10068	2	DIN 100
120.00	57.00	101.50	10.00	4	71.80	71.80	58.00	687.20.2.120410	1	Sprinter
120.00	75.00	101.50	10.20	8			54.00	687.20.2.120810	2	DIN 120
105.00	46.00	84.80	10.30	4	60.00	60.00	42.00	687.20.2.0040	1	Toyota Hilux
	60.00	90.00	10.00	4	57.80	68.90	40.00	687.20.2.059	1	Mitsubishi
118.00	65.30		10.00	4	69.30	69.30	58.00	687.20.2.118410	1	Amarok
97.00	60.30	79.40	9.50	4	51.00	67.40	58.00	687.20.2.1310	1	SAE 1310 Face
132.00	67.00		10.00	4	72.00	85.80	58.00	687.20.2.132410	1	Crafter; Sprinter
116.00	69.90	95.30	11.20	4	61.20	73.00	40.00	687.20.2.1410	1	SAE 1410 Face
115.00	46.00	93.30	10.90	4	66.00	66.00	41.50	687.20.2.6020	1	Toyota Landcruiser

GWB Series: 687.30 Suits:K5A730 34.93 x 106.38

OD (N)	Spigot (K)	PCD (D)	Hole (D1)	Qty (D1)	(D2)	(D3)	FC (L)	Part #	Type	Notes
120.00	75.00	101.50	10.20	8			60.00	3.2.120810.1480	2	DIN 120
120.00	75.00	101.50	10.20	8			64.00	687.30.2.120810	2	DIN 120
150.00	90.00	130.00	12.00	8				687.30.2.150812.CV		

Flange Yoke



Flange Yoke

120.00	100.00	11.20	4	57.30	81.10	63.50	687.30.2.120411	4	KV
135.00	80.00	109.10	12.20	4	55.00	95.20	69.00	3.2.013	1 Isuzu
120.00	70.00	100.00	12.20	4	64.30	76.60	65.00	3.2.352.1480	1 Mitsubishi
146.00	95.20	120.60	12.70	4	77.50	92.40	50.80	3.2.479	1 SAE 1480-1550 Face
146.00	95.30	101.50	9.50	4	77.50	92.40		687.30..2.1510.CV	

GWB Series: 587.15 Suits:K5A622 42.00 x 104.50

OD (N)	Spigot (K)	PCD (D)	Hole (D1)	Qty (D1)	(D2)	(D3)	FC (L)	Part #	Type	Notes
120.00	75.00	101.40	10.00	8			75.00	587.15.2.120810	2	35 Degree
150.00	90.00	130.00	12.00	8			80.00	587.15.2.150812	2	DIN 150
120.00		100.00	11.00	4	57.30	81.10	75.00	587.15.2.120411	4	35 Degree KV
130.00	82.50	112.00	10.00	8			80.00	587.15.2.130810	2	Mercedes Benz
146.00	95.30	101.50	9.50	8	77.50	92.40	80.00	587.15.2.1510	1	1510 Flange Face

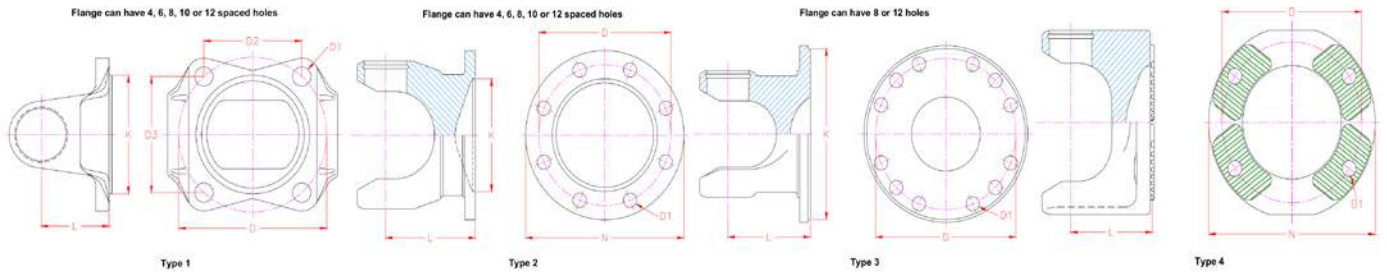
GWB Series: 687.35 Suits:802054 42.00 x 119.40

OD (N)	Spigot (K)	PCD (D)	Hole (D1)	Qty (D1)	(D2)	(D3)	FC (L)	Part #	Type	Notes
150.00	90.00	130.00	12.00	8			72.00	687.35.2.150812	2	
180.00	110.00	155.50	12.00	8			88.00	687.35.2.180812	2	
120.00		100.00	11.00	4	57.30	81.10	75.00	687.35.2.120411	4	KV
150.00		130.00	13.00	4	74.50	106.50	75.00	687.35.2.150413	4	KV
174.60	168.20	155.60	9.50	8			88.00	687.35.2.1610	3	1610 Flange Face

GWB Series: 687.40 Suits:802043 47.63 x 135.17

OD (N)	Spigot (K)	PCD (D)	Hole (D1)	Qty (D1)	(D2)	(D3)	FC (L)	Part #	Type	Notes
150.00	90.00	130.00	12.00	8			95.00	687.40.2.150812	2	
180.00	110.00						92.00	687.40.2.180000	2	Blank Face
150.00		130.00	13.00	8	74.50	106.50	82.00	687.40.2.150413	4	KV
180.00		150.00	15.00	4	86.00	122.90	82.00	687.40.2.180415	4	KV

Flange Yoke



Flange Yoke

174.60	168.20	155.60	9.50	8		92.00	687.40.2.1610	3	SAE 1610 Face
203.00	196.80	184.20	9.50	8		90.00	687.40.2.1710	3	SAE 1710 Face
180.00	95.00	150.00	14.30	4		85.00	687.40.2.HINO	1	Suit FG

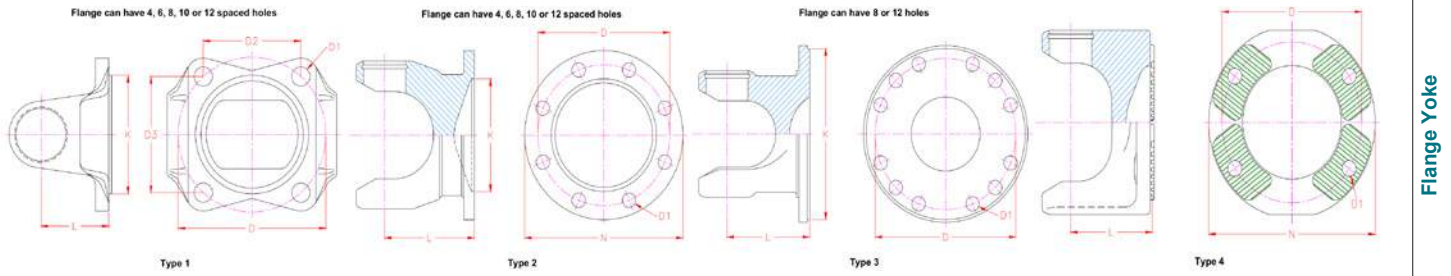
GWB Series: 587.20 Suits:U767 48.00 x 116.50

OD (N)	Spigot (K)	PCD (D)	Hole (D1)	Qty (D1)	(D2)	(D3)	FC (L)	Part #	Type	Notes
150.00	90.00	130.00	12.10	8			75.00	587.20.2.12761X	2	CV Yoke Din 150 Less Ball Kit
150.00	90.00	130.00	12.00	8			86.00	587.20.2.150812	2	
120.00		90.00	13.00	4	57.30	81.10	75.00	587.20.2.120413	4	Special Unimog
150.00		130.00	13.00	4	74.50	106.50	86.00	587.20.2.150413	4	KV
150.00		130.00	13.10	4			75.00	587.20.2.18985	4	CV Yoke 150KV Includes Ball Kit
175.00	168.20	155.50	9.70	8			75.00	587.20.2.12763X	3	CV Yoke SAE 1610 Less Ball Kit
150.00	140.46		38.00	4			75.00	587.20.2.12768X		CV Yoke 6C Less Ball Kit
174.60	168.20	155.60	9.50	8			86.00	587.20.2.1610.1	3	35 Degree 1610 Flange Face

GWB Series: 587.30 Suits:U756 52.00 x 133.00

OD (N)	Spigot (K)	PCD (D)	Hole (D1)	Qty (D1)	(D2)	(D3)	FC (L)	Part #	Type	Notes
150.00	90.00						93.00	587.30.2.150000	2	DIN150 Blank
150.00	90.00	130.00	12.00	8			90.00	587.30.2.150812	2	35 Degree
165.00	95.00	140.00	16.00	8			80.00	587.30.2.165816	2	24 Degree
180.00	110.00	155.50	14.00	8			90.00	587.30.2.180814.1	2	35 Degree
150.00		130.00	13.00	4	74.50	106.50	95.00	587.30.2.150413	4	KV
165.00		140.00	13.10	4	80.00	114.50	95.00	587.30.2.165413	4	Special 165KV suits Mercedes
174.60	168.20	155.60	9.50	8			88.00	587.30.2.1610.1	3	35 Degree 1610 Flange Face
203.20	196.90	184.20	11.10	12			93.00	587.30.2.1810	3	35 Degree 1810 Flange Face

Flange Yoke



Flange Yoke

GWB Series: 687.45 Suits:802029 52.00 x 147.20

OD (N)	Spigot (K)	PCD (D)	Hole (D1)	Qty (D1)	(D2)	(D3)	FC (L)	Part #	Type	Notes
180.00	110.00	155.50	16.20	10			95.00	687.45.2.1801016	2	
180.00	110.00	155.50	14.20	8			100.00	687.45.2.180814	2	
225.00	140.00						104.00	687.45.2.225000	2	Blank Din 225
150.00		130.00	13.00	4	74.50	106.50	100.00	687.45.2.150413	4	150KV 25 Degree
180.00		150.00	15.00	4	86.00	122.90	108.00	687.45.2.180415	4	KV
180.00		150.00	15.00	4	86.00	122.90	87.00	687.45.2.180415.1	4	KV
174.60	168.20	155.60	9.70	8			70.00	687.45.2.1610	3	SAE 1610 Face 35
203.20	196.80	184.10	11.10	12			86.00	687.45.2.1810	3	1810 Flange Face
203.20	196.80	184.10	11.10	12			100.00	687.45.2.1810.1	3	1810 Flange Face

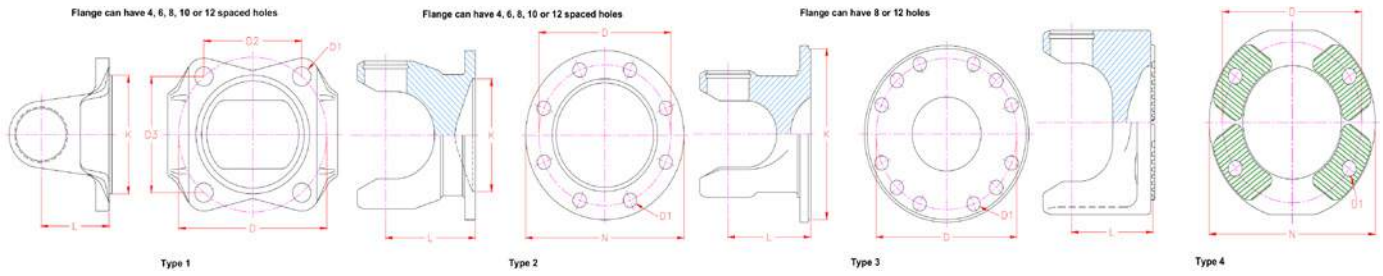
GWB Series: 587.36 Suits:U813 57.00 x 144.00

OD (N)	Spigot (K)	PCD (D)	Hole (D1)	Qty (D1)	(D2)	(D3)	FC (L)	Part #	Type	Notes
180.00	110.00	155.50	16.00	10			100.00	587.36.2.1801016	2	35 Degree
180.00	110.00	155.50	14.00	8			100.00	587.36.2.180814	2	35 Degree
225.00	140.00						100.00	587.36.2.2250000	2	Blank 35 Degree
225.00	140.00	196.00	16.00	8			85.00	587.36.2.225816	2	35 Degree
180.00		150.00	15.00	4	86.00	122.90	96.00	587.36.2.180415	4	35 Degree KV
203.20	196.90	184.20	11.10	12			100.00	587.36.2.1810	3	1810 Flange Face

GWB Series: 587.42 / 687.55 Suits:U763 57.00 x 152.00

OD (N)	Spigot (K)	PCD (D)	Hole (D1)	Qty (D1)	(D2)	(D3)	FC (L)	Part #	Type	Notes
180.00	110.00	155.50	16.00	10			95.00	587.42.2.1801016	2	
180.00	110.00	155.50	14.00	8			95.00	587.42.2.180814	2	
225.00	140.00						95.00	587.42.2.2250000	2	Blank
225.00	140.00	196.00	16.00	8			95.00	587.42.2.225816	2	24 Degree

Flange Yoke



Flange Yoke

180.00	150.00	15.00	4	86.00	122.90	95.00	587.42.2.180415	4	24 Degree KV
180.00	150.00	15.00	4	86.00	122.90	59.00	587.42.2.180415.1	4	5 Degree KV
180.00	150.00	15.20	4	86.00	122.90	102.00	587.42.2.180415.2	4	35 Degree
203.20	196.70	184.20	11.10	12		95.00	587.42.2.1810	3	1810 Flange Face
203.20	196.70	184.20	11.10	12		57.00	587.42.2.1810.1	3	5 Degree 1810 Flange Face
203.00	196.90					95.00	587.42.2.1810B	3	1710/1810 Face Less Holes

GWB Series: 687.60 Suits:802041 59.00 x 167.40

OD (N)	Spigot (K)	PCD (D)	Hole (D1)	Qty (D1)	(D2)	(D3)	FC (L)	Part #	Type	Notes
180.00	110.00	155.50	16.20	10			110.00	687.60.2.1801016	2	
180.00		150.00	15.00	4	86.00	122.90	100.00	687.60.2.180415	4	KV
180.00		150.00	15.00	4	86.00	122.90	100.30	687.60.2.180415	4	KV
203.20	196.80	184.10	11.10	12			86.00	687.60.2.1810	3	1810 Flange Face

GWB Series: 190.50 Suits:5.316X 65.00 x 144.00

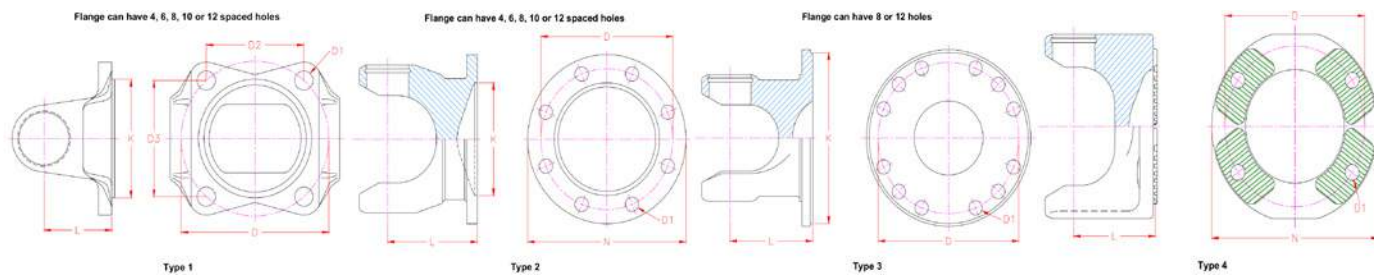
OD (N)	Spigot (K)	PCD (D)	Hole (D1)	Qty (D1)	(D2)	(D3)	FC (L)	Part #	Type	Notes
225.00	140.00	196.00	16.00	8			108.00	190.50.2.225816	2	15 Degree
250.00	140.00	218.00	18.00	8			110.00	190.50.2.250818	2	15 Degree

GWB Series: 587.48 / 687.65 Suits:K5A643 65.00 x 172.00

OD (N)	Spigot (K)	PCD (D)	Hole (D1)	Qty (D1)	(D2)	(D3)	FC (L)	Part #	Type	Notes
180.00	110.00						110.00	587.48.2.180000	2	Blank
180.00	110.00	155.00	16.00	10			110.00	587.48.2.1801016	2	
225.00	140.00						110.00	587.48.2.2250000	2	Blank
225.00	140.00	196.00	16.00	12			110.00	587.48.2.2251216	2	35 Degree
225.00	140.00	196.00	16.00	8			110.00	587.48.2.225816	2	35 Degree
250.00	140.00						110.00	587.48.2.2500000	2	Blank
250.00	140.00	200.00	18.00	8			110.00	587.48.2.250818	2	

Flange Yoke

Flange Yoke



180.00	150.00	15.00	4	86.00	122.90	100.00	587.48.2.180415	4	KV
203.00	196.80	184.10	11.10	12		110.00	587.48.2.1810	3	SAE 1810 Face
241.30	177.80	209.60	15.90	8		110.00	587.48.2.1880	3	1880 Bolt Pattern

GWB Series: 587.50 Suits:K5A625 72.00 x 185.00

OD (N)	Spigot (K)	PCD (D)	Hole (D1)	Qty (D1)	(D2)	(D3)	FC (L)	Part #	Type	Notes
276.30	222.30	247.70	15.90	8			98.40	587.50.2.1900	3	24 Degree
225.00	140.00	196.00	16.00	8			108.00	587.50.2.225816	2	24 Degree
225.00	140.00	218.00	18.00	8			140.00	587.50.2.250818	2	24 Degree
200.00		165.00	15.00	4			105.00	587.50.2.200415		

GWB Series: 292.50 Suits:5.370X 74.00 x 129.00

OD (N)	Spigot (K)	PCD (D)	Hole (D1)	Qty (D1)	(D2)	(D3)	FC (L)	Part #	Type	Notes
250.00	140.00	218.00	18.00	8			135.00	292.50.2.250818	2	

GWB Series: 587.55 Suits:K5A708 74.00 x 217.00

OD (N)	Spigot (K)	PCD (D)	Hole (D1)	Qty (D1)	(D2)	(D3)	FC (L)	Part #	Type	Notes
250.00	140.00						125.00	587.55.2.250000		
250.00	140.00	218.00	18.20	8			125.00	587.55.2.250818	2	Plus 2 x M18 Jacking
285.00	175.00						125.00	587.55.2.285000		
285.00	175.00	245.00	20.20	8			125.00	587.55.2.285820	2	Plus 2 x M18 Jacking

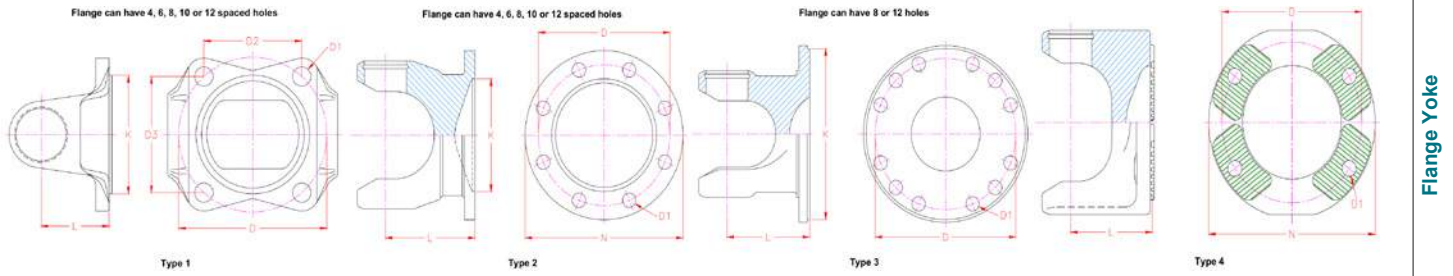
GWB Series: 392.55 Suits:5.371X 83.00 x 139.00

OD (N)	Spigot (K)	PCD (D)	Hole (D1)	Qty (D1)	(D2)	(D3)	FC (L)	Part #	Type	Notes
250.00	140.00	218.00	19.00	8			165.00	392.55.2.250819	2	Inc. Key & Key Bolts

GWB Series: 190.60 Suits:K5A627 83.00 x 175.00

OD (N)	Spigot (K)	PCD (D)	Hole (D1)	Qty (D1)	(D2)	(D3)	FC (L)	Part #	Type	Notes
285.00	175.00	245.00	20.00	8			135.00	190.60.2.285820	2	15 Degree
315.00	175.00	280.00	22.00	8			150.00	190.60.2.315822	2	15 Degree

Flange Yoke



GWB Series: 190.65 Suits:K5A628 95.00 x 190.00

OD (N)	Spigot (K)	PCD (D)	Hole (D1)	Qty (D1)	(D2)	(D3)	FC (L)	Part #	Type	Notes
315.00	175.00	280.00	22.00	8			150.00	190.65.2.315822	2	15 Degree
350.00	220.00	310.00	22.00	10			170.00	190.65.2.3501022	2	15 Degree

GWB Series: 285 Suits:U3285 95.00 x 250.00

OD (N)	Spigot (K)	PCD (D)	Hole (D1)	Qty (D1)	(D2)	(D3)	FC (L)	Part #	Type	Notes
285.00		245.00	21.00	4				285.2.285421	1	Toothed on Circumference
285.00		245.00	21.00	4				285.2.285821LK	1	KEY Not Included

Mercedes Series: MER802045 Suits:802045 34.00 x 89.00

OD (N)	Spigot (K)	PCD (D)	Hole (D1)	Qty (D1)	(D2)	(D3)	FC (L)	Part #	Type	Notes
100.00	50.00	80.00	10.00	4			48.00	MER.2.002	2	Unimog with 8 key

Mercedes Series: MER802008 Suits:802008 38.00 x 89.20

OD (N)	Spigot (K)	PCD (D)	Hole (D1)	Qty (D1)	(D2)	(D3)	FC (L)	Part #	Type	Notes
100.00	50.00	80.00	10.00	4			48.00	MER.2.001	1	Unimog with 8 key

Mercedes Series: MER587.15 Suits:K5A622 42.00 x 104.50

OD (N)	Spigot (K)	PCD (D)	Hole (D1)	Qty (D1)	(D2)	(D3)	FC (L)	Part #	Type	Notes
130.00	82.50	112.00	10.00	8			80.00	587.15.2.130810	2	130810 Bolt pattern

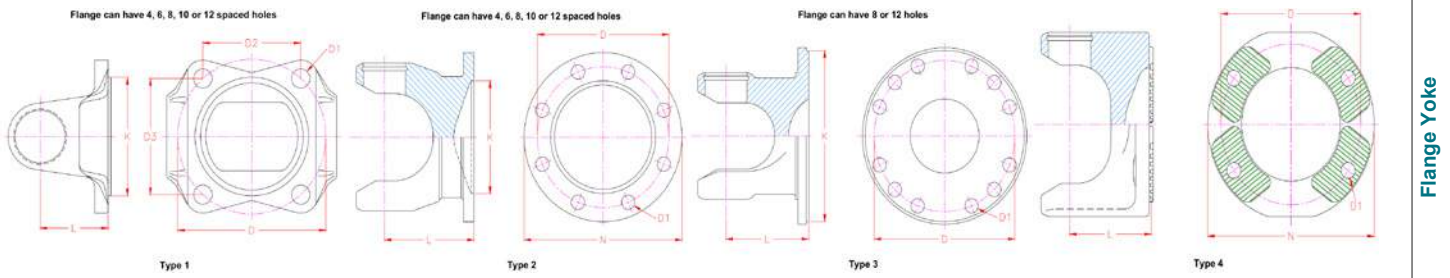
Mercedes Series: MERU765 Suits:U765 48.00 x 126.00

OD (N)	Spigot (K)	PCD (D)	Hole (D1)	Qty (D1)	(D2)	(D3)	FC (L)	Part #	Type	Notes
150.00	90.00	130.00	12.00	8			80.00	MER.2.765.150812	2	150812 Bolt pattern
150.00		130.00	13.00	4	74.50	106.50	75.00	MER.2.765.150413	4	KV

Mercedes Series: MERU761 Suits:U761 53.00 x 135.00

OD (N)	Spigot (K)	PCD (D)	Hole (D1)	Qty (D1)	(D2)	(D3)	FC (L)	Part #	Type	Notes
165.00	95.00	140.00	16.00	8			90.00	MER.2.761.165816	2	
150.00		130.00	13.00	4	74.50	106.50	85.00	MER.2.761.150413	4	KV
165.00		130.00	13.00	4	80.50	115.00	93.00	MER.2.761.165413	4	Mercedes 165 KV
180.00		150.00	15.00	4	86.00	122.90	93.00	MER.2.761.180415	4	KV

Flange Yoke



Mercedes Series: 385.60 Suits:801001 68.00 x 95.00

OD (N)	Spigot (K)	PCD (D)	Hole (D1)	Qty (D1)	(D2)	(D3)	FC (L)	Part #	Type	Notes
180.00		150.00	15.00	4	86.00	122.90	100.00	MER.2.801001	4	180415KV Pattern. 89.00mm Between Circlips

Mercedes Series: 385.68 Suits:801002 68.00 x 123.00

OD (N)	Spigot (K)	PCD (D)	Hole (D1)	Qty (D1)	(D2)	(D3)	FC (L)	Part #	Type	Notes
200.00		165.00	15.00	4			100.00	MER.2.801002	4	200415KV. 117.00mm Between Circlips

Scania Series: P600 Suits:802036 65.00 x 190.00

OD (N)	Spigot (K)	PCD (D)	Hole (D1)	Qty (D1)	(D2)	(D3)	FC (L)	Part #	Type	Notes
208.00		180.00	15.00	4	121.50	133.00	93.00	SC.2.208415	4	KV M12x1.75 Jacking bolt holes

Volvo Series: VOL300 Suits:U380 44.00 x 126.20

OD (N)	Spigot (K)	PCD (D)	Hole (D1)	Qty (D1)	(D2)	(D3)	FC (L)	Part #	Type	Notes
175.00	168.30	155.60	9.52	8			61.00	VOL.2.300	3	1610 Bolt pattern

Volvo Series: VOL400 Suits:U381 50.00 x 152.60

OD (N)	Spigot (K)	PCD (D)	Hole (D1)	Qty (D1)	(D2)	(D3)	FC (L)	Part #	Type	Notes
203.00	196.90	184.20	9.52	8			75.00	VOL.2.400	3	1710 Bolt pattern
203.00	196.90	184.20	11.13	12			75.00	VOL.2.400.1	3	1810 Bolt pattern
203.00	168.30	155.60	9.52	8			75.00	VOL.2.K56	3	1610 Bolt pattern

Volvo Series: VOL687.45 Suits:802029 52.00 x 147.20

OD (N)	Spigot (K)	PCD (D)	Hole (D1)	Qty (D1)	(D2)	(D3)	FC (L)	Part #	Type	Notes
180.00		150.00	15.20	4				687.45.2.180415	4	180KV

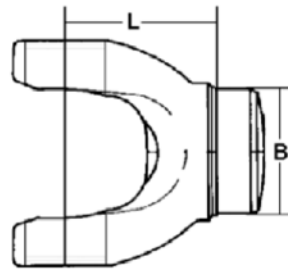
Volvo Series: VOL500/600 Suits:803002 57.00 x 152.60

OD (N)	Spigot (K)	PCD (D)	Hole (D1)	Qty (D1)	(D2)	(D3)	FC (L)	Part #	Type	Notes
203.00	196.90	184.20	11.13	12			80.00	VOL.2.600	3	1810 Bolt pattern

Volvo Series: VOL687.60 Suits:802041 59.00 x 167.40

OD (N)	Spigot (K)	PCD (D)	Hole (D1)	Qty (D1)	(D2)	(D3)	FC (L)	Part #	Type	Notes
203.00		150.00	15.20	4				687.60.2.180415		180KV

Weld Yoke



Weld Yoke

ELBE Series: 105 Suits:802024 17.00 x 41.00

Tube (OD)	Tube (T)	Butt (B)	Length (L)	Angle (F)	Part #	Notes
28.00	1.50	25.20	32.00		105.26	

ELBE Series: 106 Suits:U901 19.00 x 48.00

Tube (OD)	Tube (T)	Butt (B)	Length (L)	Angle (F)	Part #	Notes
32.00	1.50	29.20	44.00		106.26	

ELBE Series: 107 Suits:802004 22.00 x 58.00

Tube (OD)	Tube (T)	Butt (B)	Length (L)	Angle (F)	Part #	Notes
40.00	2.00	36.20	44.00		107.26	

ELBE Series: 109 - New Suits:802039 28.50 x 70.90

Tube (OD)	Tube (T)	Butt (B)	Length (L)	Angle (F)	Part #	Notes
50.00	2.00	46.20	48.00		109.26	

ELBE Series: 110 Suits:802006 30.00 x 83.00

Tube (OD)	Tube (T)	Butt (B)	Length (L)	Angle (F)	Part #	Notes
50.00	3.00	44.20	59.00		110.26	

ELBE Series: 112 Suits:802040 35.00 x 97.00

Tube (OD)	Tube (T)	Butt (B)	Length (L)	Angle (F)	Part #	Notes
60.00	4.00	52.20	65.00		112.26	

GWB Series: 687.15 Suits:K5A727 27.00 x 74.50

Tube (OD)	Tube (T)	Butt (B)	Length (L)	Angle (F)	Part #	Notes
62.30	2.40	57.70	47.00		687.15.26	2.5x.095 tube

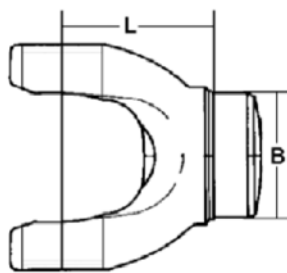
GWB Series: 687.20 Suits:802038 30.20 x 81.80

Tube (OD)	Tube (T)	Butt (B)	Length (L)	Angle (F)	Part #	Notes
50.00	3.00	44.20	44.00		687.20.26.3	
76.20	1.65	73.10	53.00		687.20.26.1	3x.065 tube
76.20	2.40	71.60	45.00		687.20.26	3x.095 tube

GWB Series: 687.30 Suits:K5A730 34.93 x 106.38

Tube (OD)	Tube (T)	Butt (B)	Length (L)	Angle (F)	Part #	Notes
					687.30.28.CV	
			102.00		687.30.29.CV	Centre Yoke

Weld Yoke



Weld Yoke

88.90 2.41 84.28 51.60 **687.30.26** Can also use 5.188X

GWB Series: 587.15 Suits:K5A622 42.00 x 104.50

Tube (OD)	Tube (T)	Butt (B)	Length (L)	Angle (F)	Part #	Notes
80.00	3.50	73.20	84.00		587.15.26	

GWB Series: 687.35 Suits:802054 42.00 x 119.40

Tube (OD)	Tube (T)	Butt (B)	Length (L)	Angle (F)	Part #	Notes
100.00	3.00	94.20	69.00		687.35.26	

GWB Series: 687.40 Suits:802043 47.63 x 135.17

Tube (OD)	Tube (T)	Butt (B)	Length (L)	Angle (F)	Part #	Notes
90.00	5.50	79.20	90.00		687.40.26.1	
100.00	4.50	91.20	100.00		687.40.26.3	
120.00	3.00	114.20	87.00		687.40.26	

GWB Series: 587.20 Suits:U767 48.00 x 116.50

Tube (OD)	Tube (T)	Butt (B)	Length (L)	Angle (F)	Part #	Notes
85.50	5.00	75.70	85.00		587.20.26	

GWB Series: 587.30 Suits:U756 52.00 x 133.00

Tube (OD)	Tube (T)	Butt (B)	Length (L)	Angle (F)	Part #	Notes
90.00	5.50	79.20	98.00		587.30.26	

GWB Series: 687.45 Suits:802029 52.00 x 147.20

Tube (OD)	Tube (T)	Butt (B)	Length (L)	Angle (F)	Part #	Notes
110.00	5.00	100.20	108.00		687.45.26.2	
120.00	4.00	112.20	95.00		687.45.26	

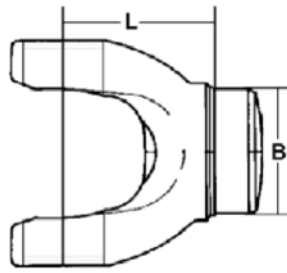
GWB Series: 587.36 Suits:U813 57.00 x 144.00

Tube (OD)	Tube (T)	Butt (B)	Length (L)	Angle (F)	Part #	Notes
					587.36.28.120883	Pin Yoke Suit Double Cardan
100.00	6.00	88.20	135.00		587.36.26	

GWB Series: 587.42 / 687.55 Suits:U763 57.00 x 152.00

Tube (OD)	Tube (T)	Butt (B)	Length (L)	Angle (F)	Part #	Notes
112.00	7.00	98.20	100.00		587.42.26	

Weld Yoke



Weld Yoke

120.00	6.00	108.20	102.00	587.42.26.2	
--------	------	--------	--------	--------------------	--

130.00	6.00	118.20	85.00	587.42.26.1	Multifit Tubes also suits 120x6 @ 101mm & 110x6 @ 119mm
--------	------	--------	-------	--------------------	---

GWB Series: 687.60 Suits:802041 59.00 x 167.40

Tube (OD)	Tube (T)	Butt (B)	Length (L)	Angle (F)	Part #	Notes
130.00	6.00	118.20	105.50		687.60.26	

GWB Series: 587.48 / 687.65 Suits:K5A643 65.00 x 172.00

Tube (OD)	Tube (T)	Butt (B)	Length (L)	Angle (F)	Part #	Notes
120.00	6.00	108.20	116.00		587.48.26.2	
140.00	5.00	130.20	115.00		587.48.26	

GWB Series: 587.50 Suits:K5A625 72.00 x 185.00

Tube (OD)	Tube (T)	Butt (B)	Length (L)	Angle (F)	Part #	Notes
144.00	7.00	130.20	138.00		587.50.26	Has Track for Balance Weights

GWB Series: 292.50 Suits:5.370X 74.00 x 129.00

Tube (OD)	Tube (T)	Butt (B)	Length (L)	Angle (F)	Part #	Notes
			190.00		292.50.26	Use 392.50
			167.00		392.50.26	292.50 Universal Joint on larger Tube
			160.00		392.50.26.1	292.50 Universal Joint on Larger Tube

GWB Series: 190.55 Suits:K5A626 74.00 x 154.00

Tube (OD)	Tube (T)	Butt (B)	Length (L)	Angle (F)	Part #	Notes
			175.00		190.55.26	

GWB Series: 587.55 Suits:K5A708 74.00 x 217.00

Tube (OD)	Tube (T)	Butt (B)	Length (L)	Angle (F)	Part #	Notes
168.00	7.30	153.60	150.00		587.55.26	

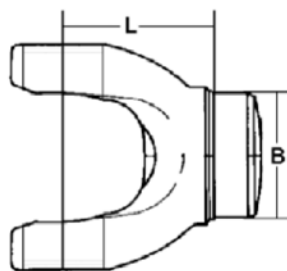
GWB Series: 190.65 Suits:K5A628 95.00 x 190.00

Tube (OD)	Tube (T)	Butt (B)	Length (L)	Angle (F)	Part #	Notes
210.00	10.00	190.20	165.00		190.65.26	

Mercedes Series: MER802045 Suits:802045 34.00 x 89.00

Tube (OD)	Tube (T)	Butt (B)	Length (L)	Angle (F)	Part #	Notes
50.00	4.00	42.20	50.00		MER.26.002	

Weld Yoke



Weld Yoke

Mercedes Series: MER802008 Suits:802008 38.00 x 89.20

Tube (OD)	Tube (T)	Butt (B)	Length (L)	Angle (F)	Part #	Notes
50.00	4.00	42.20	50.00		MER.26.001	

Mercedes Series: MERU765 Suits:U765 48.00 x 126.00

Tube (OD)	Tube (T)	Butt (B)	Length (L)	Angle (F)	Part #	Notes
90.00	4.00	82.20	130.00		MER.26.765	

Mercedes Series: MERU761 Suits:U761 53.00 x 135.00

Tube (OD)	Tube (T)	Butt (B)	Length (L)	Angle (F)	Part #	Notes
100.00	5.00	90.20	116.00		MER.26.761	

Mercedes Series: 385.60 Suits:801001 68.00 x 95.00

Tube (OD)	Tube (T)	Butt (B)	Length (L)	Angle (F)	Part #	Notes
140.00	5.00	130.20	147.00		MER.26.801001	89.00mm Between Circlips

Mercedes Series: 385.68 Suits:801002 68.00 x 123.00

Tube (OD)	Tube (T)	Butt (B)	Length (L)	Angle (F)	Part #	Notes
144.00	7.00	130.20	140.00		MER.26.801002	117.00mm Between Circlips

Scania Series: P30 / T51 Suits:802009 38.00 x 148.00

Tube (OD)	Tube (T)	Butt (B)	Length (L)	Angle (F)	Part #	Notes
91.00	5.50	80.20	65.00		SC.26.300	T51 & TA51 Series

Scania Series: T60 Suits:U384 44 00 x 149 00

Tube (OD)	Tube (T)	Butt (B)	Length (L)	Angle (F)	Part #	Notes
92.00	4.50	83.20	75.00		SC.26.135	T60 Series

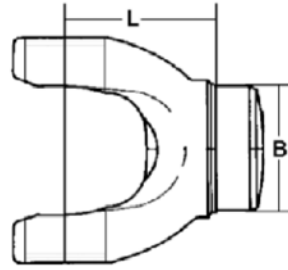
Scania Series: P40 / T61 Suits:802015 48.00 x 161.00

Tube (OD)	Tube (T)	Butt (B)	Length (L)	Angle (F)	Part #	Notes
100.00	5.00	90.20	70.00		SC.26.232	T61/P40 Series
100.00	5.00	90.20	75.00		SC.26.400	T61 / P40 Series
100.00	5.00	90.20			SC.26.P420	Wide Angle for Interaxle Application

Scania Series: P50 / T71 Suits:802018 57.00 x 164.00

Tube (OD)	Tube (T)	Butt (B)	Length (L)	Angle (F)	Part #	Notes
95.00	5.00	85.20	90.00		SC.26.P520	P50, PF50, P500, T50, TA50, T71, TA71, T81 & TA81 Series. Supplier 41 is 35° at 98mm & Suits 90x4 Tube
100.00	4.50	91.20	190.00		SC.26.253	T71/P50 Series

Weld Yoke



Weld Yoke

108.00	5.50	97.20	110.00	SC.26.500	P50, PF50, P500, T50, TA50, T71, TA71, T81 & TA81 Series
--------	------	-------	--------	------------------	--

Scania Series: P600 Suits:802036 65.00 x 190.00

Tube (OD)	Tube (T)	Butt (B)	Length (L)	Angle (F)	Part #	Notes
114.30		114.50	102.00		SC.26.600.1	P60 & P600 Series Scania. Butt requires modification
114.30	6.60	101.30	92.00		SC.26.600	P600 Series Machine Butt to Suit 4.5X.259

Volvo Series: VOL300 Suits:U380 44.00 x 126.20

Tube (OD)	Tube (T)	Butt (B)	Length (L)	Angle (F)	Part #	Notes
85.00	4.00	77.20	76.00		VOL.28.300	

Volvo Series: VOL400 Suits:U381 50.00 x 152.60

Tube (OD)	Tube (T)	Butt (B)	Length (L)	Angle (F)	Part #	Notes
92.00	5.00	82.20	90.00		VOL.28.400	

Volvo Series: VOL500/600 Suits:803002 57.00 x 152.60

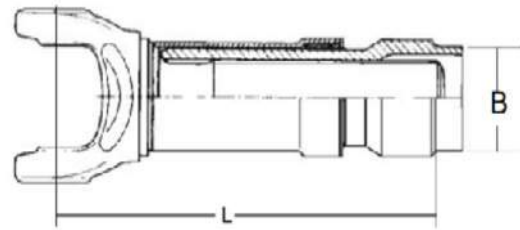
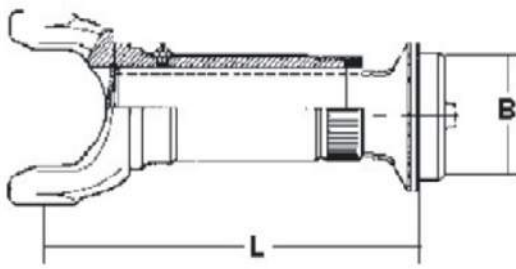
Tube (OD)	Tube (T)	Butt (B)	Length (L)	Angle (F)	Part #	Notes
100.00	6.00	88.20	115.00		VOL.28.500	
114.30	5.50	103.50	115.00		VOL.28.600	

Volvo Series: VOL687.60 Suits:802041 59.00 x 167.40

Tube (OD)	Tube (T)	Butt (B)	Length (L)	Angle (F)	Part #	Notes
130.00	6.00	118.20	105.50		687.60.26	

Yoke Shaft & Barrel / Slip & Stub Assembly

Yoke Shaft & Barrel / Slip &



ELBE Series: 107 Suits:802004 22.00 x 58.00

Tube (OD)	Tube (T)	Butt (B)	Spline (S)	Qty (S)	Length (L)	Total Slip	Type	Part #	Notes
40.00	2.00	36.20			160.00			107.6	

ELBE Series: 109 - New Suits:802039 28.50 x 70.90

Tube (OD)	Tube (T)	Butt (B)	Spline (S)	Qty (S)	Length (L)	Total Slip	Type	Part #	Notes
50.00	2.00	46.20			182.00			109.6.002	

ELBE Series: 110 Suits:802006 30.00 x 83.00

Tube (OD)	Tube (T)	Butt (B)	Spline (S)	Qty (S)	Length (L)	Total Slip	Type	Part #	Notes
50.00	3.00	44.20			203.00			110.6	
50.00	3.00	44.20			185.00			110.6.001	

ELBE Series: 112 Suits:802040 35.00 x 97.00

Tube (OD)	Tube (T)	Butt (B)	Spline (S)	Qty (S)	Length (L)	Total Slip	Type	Part #	Notes
60.00	4.00	52.20			248.00			112.6	
60.00	4.00	52.20			255.00			112.6.001	

GWB Series: 687.15 Suits:K5A727 27.00 x 74.50

Tube (OD)	Tube (T)	Butt (B)	Spline (S)	Qty (S)	Length (L)	Total Slip	Type	Part #	Notes
					203.00			687.15.6.1	
63.50	2.40	58.90			175.00			687.15.6.1	2.5x x0.095 tube

GWB Series: 687.20 Suits:802038 30.20 x 81.80

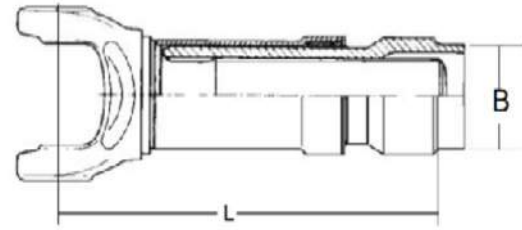
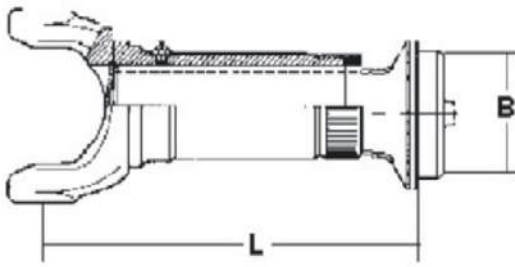
Tube (OD)	Tube (T)	Butt (B)	Spline (S)	Qty (S)	Length (L)	Total Slip	Type	Part #	Notes
50.00	3.00	44.20			209.00			687.20.6.3	
76.20	1.65	73.10			191.00			687.20.6.1	3 x 0.065 tube
76.20	2.40	71.60			200.00			687.20.6	3 x 0.095 tube
76.20	2.40	71.60			204.00			687.20.6.4	Sprinter Midship 45mm Bearing CB107
76.20	2.40	71.60			204.00			687.20.6.5	Sprinter Midship 47mm Bearing CB141 & CB142

GWB Series: 687.30 Suits:K5A730 34.93 x 106.38

Tube (OD)	Tube (T)	Butt (B)	Spline (S)	Qty (S)	Length (L)	Total Slip	Type	Part #	Notes
88.90	2.40	84.30			217.00			687.30.6	

Yoke Shaft & Barrel / Slip & Stub Assembly

Yoke Shaft & Barrel / Slip &



88.90 2.40 84.30 245.00 2.00 **687.30.6.1**

GWB Series: 587.15 Suits:K5A622 42.00 x 104.50

Tube (OD)	Tube (T)	Butt (B)	Spline (S)	Qty (S)	Length (L)	Total Slip	Type	Part #	Notes
80.00	3.50	73.20			272.00			587.15.6	

GWB Series: 687.35 Suits:802054 42.00 x 119.40

Tube (OD)	Tube (T)	Butt (B)	Spline (S)	Qty (S)	Length (L)	Total Slip	Type	Part #	Notes
70.00	4.00	62.20						687.35.6.1	
100.00	3.00	94.20			280.00			687.35.6	

GWB Series: 687.40 Suits:802043 47.63 x 135.17

Tube (OD)	Tube (T)	Butt (B)	Spline (S)	Qty (S)	Length (L)	Total Slip	Type	Part #	Notes
100.00	4.50	91.20			261.00			687.40.6.2	
100.00	4.50	91.20			345.00			687.40.6.3	
120.00	3.00	114.20			255.00			687.40.6	

GWB Series: 587.20 Suits:U767 48.00 x 116.50

Tube (OD)	Tube (T)	Butt (B)	Spline (S)	Qty (S)	Length (L)	Total Slip	Type	Part #	Notes
85.00	5.00	75.20			318.00			587.20.6	

GWB Series: 587.30 Suits:U756 52.00 x 133.00

Tube (OD)	Tube (T)	Butt (B)	Spline (S)	Qty (S)	Length (L)	Total Slip	Type	Part #	Notes
90.00	5.50	79.20			328.00			587.30.6	

GWB Series: 687.45 Suits:802029 52.00 x 147.20

Tube (OD)	Tube (T)	Butt (B)	Spline (S)	Qty (S)	Length (L)	Total Slip	Type	Part #	Notes
110.00	5.00	100.20			360.00			687.45.6.2	
120.00	4.00	112.20			260.00			687.45.6	

GWB Series: 587.36 Suits:U813 57.00 x 144.00

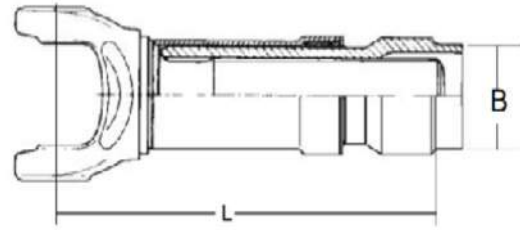
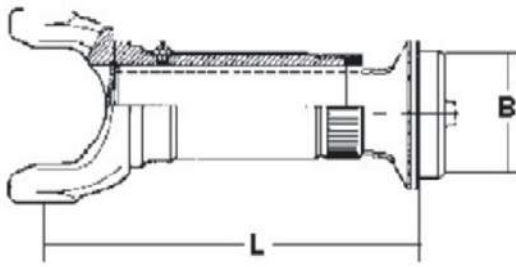
Tube (OD)	Tube (T)	Butt (B)	Spline (S)	Qty (S)	Length (L)	Total Slip	Type	Part #	Notes
100.00	6.00	88.20			340.00			587.36.6	

GWB Series: 587.42 / 687.55 Suits:U763 57.00 x 152.00

Tube (OD)	Tube (T)	Butt (B)	Spline (S)	Qty (S)	Length (L)	Total Slip	Type	Part #	Notes
110.00	6.00	98.20			290.00			587.42.6	

Yoke Shaft & Barrel / Slip & Stub Assembly

Yoke Shaft & Barrel / Slip &



110.00	6.00	98.20			395.00				587.42.6.3	
120.00	6.00	108.20			287.00				587.42.6.1	
120.00	6.00	108.20			287.00				587.42.6.2	

GWB Series: 687.60 Suits:802041 59.00 x 167.40

Tube (OD)	Tube (T)	Butt (B)	Spline (S)	Qty (S)	Length (L)	Total Slip	Type	Part #	Notes
130.00	6.00	118.20			290.00			687.60.6	

GWB Series: 587.48 / 687.65 Suits:K5A643 65.00 x 172.00

Tube (OD)	Tube (T)	Butt (B)	Spline (S)	Qty (S)	Length (L)	Total Slip	Type	Part #	Notes
120.00	6.00	108.20			338.00			587.48.6.2	
140.00	5.00	130.20			425.00			587.48.6	
140.00	5.00	130.20			308.00			587.48.6.1	

GWB Series: 587.50 Suits:K5A625 72.00 x 185.00

Tube (OD)	Tube (T)	Butt (B)	Spline (S)	Qty (S)	Length (L)	Total Slip	Type	Part #	Notes
145.00	7.50	130.20			425.00			587.50.6	

GWB Series: 587.55 Suits:K5A708 74.00 x 217.00

Tube (OD)	Tube (T)	Butt (B)	Spline (S)	Qty (S)	Length (L)	Total Slip	Type	Part #	Notes
168.80	7.30	154.40			430.00			587.55.6	Track for relocatable weights

Mercedes Series: MER802045 Suits:802045 34.00 x 89.00

Tube (OD)	Tube (T)	Butt (B)	Spline (S)	Qty (S)	Length (L)	Total Slip	Type	Part #	Notes
52.00	4.00	44.20			287.00			MER.6.002	

Mercedes Series: MER802008 Suits:802008 38.00 x 89.20

Tube (OD)	Tube (T)	Butt (B)	Spline (S)	Qty (S)	Length (L)	Total Slip	Type	Part #	Notes
52.00	4.00	44.20			237.00			MER.6.001	

Mercedes Series: MERU765 Suits:U765 48.00 x 126.00

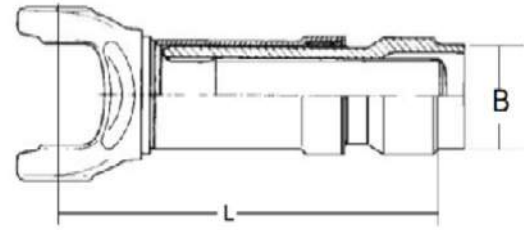
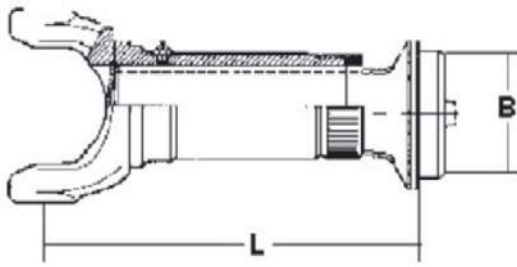
Tube (OD)	Tube (T)	Butt (B)	Spline (S)	Qty (S)	Length (L)	Total Slip	Type	Part #	Notes
90.00	4.00	82.20			330.00			MER.6.765	

Mercedes Series: MERU761 Suits:U761 53.00 x 135.00

Tube (OD)	Tube (T)	Butt (B)	Spline (S)	Qty (S)	Length (L)	Total Slip	Type	Part #	Notes
100.00	5.00	90.20			373.00			MER.6.761	

Yoke Shaft & Barrel / Slip & Stub Assembly

Yoke Shaft & Barrel / Slip &



Mercedes Series: 385.60 Suits:801001 68.00 x 95.00

Tube (OD)	Tube (T)	Butt (B)	Spline (S)	Qty (S)	Length (L)	Total Slip	Type	Part #	Notes
140.00	5.00	130.20			400.00			MER.6.801001	89.00mm Between Circlips

Mercedes Series: 385.68 Suits:801002 68.00 x 123.00

Tube (OD)	Tube (T)	Butt (B)	Spline (S)	Qty (S)	Length (L)	Total Slip	Type	Part #	Notes
144.00	7.00	130.20			370.00			MER.6.801002	117.00 Between Circlips

Scania Series: T60 Suits:U384 44.00 x 110.00

Tube (OD)	Tube (T)	Butt (B)	Spline (S)	Qty (S)	Length (L)	Total Slip	Type	Part #	Notes
92.00	4.50	83.20			325.00			SC.6.T60	T60

Scania Series: P40 / T61 Suits:802015 48.00 x 161.00

Tube (OD)	Tube (T)	Butt (B)	Spline (S)	Qty (S)	Length (L)	Total Slip	Type	Part #	Notes
95.00	5.00	85.20	55.60	24	350.00			SC.6.P420	Wide Angle 32°
100.00	5.00	90.20	68.00	26	298.00			SC.6.400	T61 / P40 / P400

Scania Series: T70 Suits:U386 50.00 x 164.00

Tube (OD)	Tube (T)	Butt (B)	Spline (S)	Qty (S)	Length (L)	Total Slip	Type	Part #	Notes
95.00	5.00	85.20	60.00		325.00	1.00		SC.6.U386	

Scania Series: P50 / T71 Suits:802018 57.00 x 164.00

Tube (OD)	Tube (T)	Butt (B)	Spline (S)	Qty (S)	Length (L)	Total Slip	Type	Part #	Notes
92.00	5.00	82.20	65.00		365.00			SC.6.P520	
108.00	5.50	97.20	79.00	30	312.00			SC.6.500	T71 / P50 / P500

Scania Series: P600 Suits:802036 65.00 x 190.00

Tube (OD)	Tube (T)	Butt (B)	Spline (S)	Qty (S)	Length (L)	Total Slip	Type	Part #	Notes
114.30	5.50	103.50	85.00	32	405.00			SC.6.600	P600

Volvo Series: VOL300 Suits:U380 44.00 x 126.20

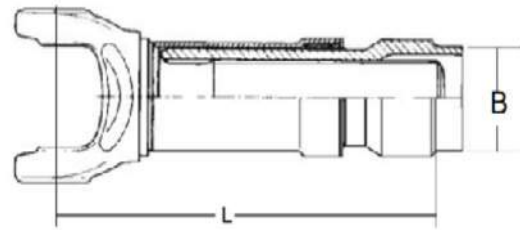
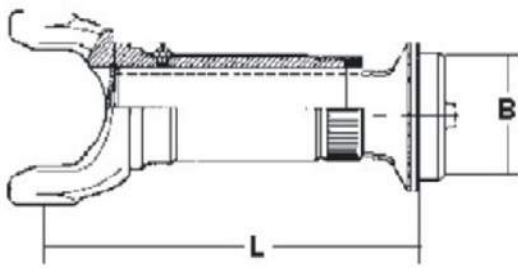
Tube (OD)	Tube (T)	Butt (B)	Spline (S)	Qty (S)	Length (L)	Total Slip	Type	Part #	Notes
85.00	4.00	77.20	55.00		305.00			VOL.6.300	300 Series

Volvo Series: VOL400 Suits:U381 50.00 x 152.60

Tube (OD)	Tube (T)	Butt (B)	Spline (S)	Qty (S)	Length (L)	Total Slip	Type	Part #	Notes
92.00	5.00	82.20	65.00		333.00			VOL.6.400	400 Series

Yoke Shaft & Barrel / Slip & Stub Assembly

Yoke Shaft & Barrel / Slip &



Volvo Series: VOL687.45 Suits:802029 52.00 x 147.20

Tube (OD)	Tube (T)	Butt (B)	Spline (S)	Qty (S)	Length (L)	Total Slip	Type	Part #	Notes
120.00	4.00	112.20			267.00			687.45.6	Interaxles Volvo Application
120.00	4.00	112.20			360.00			687.45.6.1	Interaxle Volvo Application

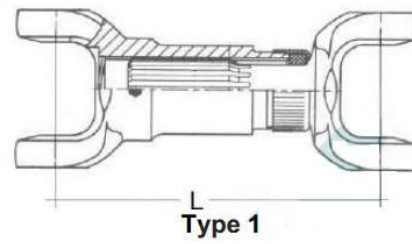
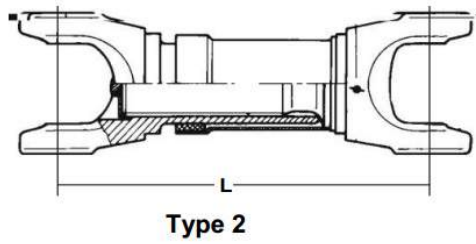
Volvo Series: VOL500/600 Suits:803002 57.00 x 152.60

Tube (OD)	Tube (T)	Butt (B)	Spline (S)	Qty (S)	Length (L)	Total Slip	Type	Part #	Notes
100.00	6.00	88.20	74.00		342.00			VOL.6.500	500 Series
114.30	5.50	103.50	85.00		350.00			VOL.6.600	600 Series

Volvo Series: VOL687.60 Suits:802041 59.00 x 167.40

Tube (OD)	Tube (T)	Butt (B)	Spline (S)	Qty (S)	Length (L)	Total Slip	Type	Part #	Notes
130.00	6.00	118.20			290.00			687.60.6	Main Drive Volvo Application

Slip Yoke & Yoke Shaft



Only C/C assembly. See complete shaft section for more options.

Slip Yoke & Yoke Shaft

ELBE Series: 107 Suits:802004 22.00 x 58.00

Length (L)	Total Slip	Spline (S)	Qty (S)	Type	Angle (F)	Part #	Notes
128.00	25.00			2		107.03.128	C-C
175.00	35.00			2		107.03.178	C-C

ELBE Series: 109 - New Suits:802039 28.50 x 70.90

Length (L)	Total Slip	Spline (S)	Qty (S)	Type	Angle (F)	Part #	Notes
141.00	25.00			2		109.03.141	C-C
166.00	40.00			2		109.03.166	C-C
206.00	85.00			2		109.03.206	C-C

ELBE Series: 110 Suits:802006 30.00 x 83.00

Length (L)	Total Slip	Spline (S)	Qty (S)	Type	Angle (F)	Part #	Notes
163.00	30.00			2		110.03.163	C-C

ELBE Series: 112 Suits:802040 35.00 x 97.00

Length (L)	Total Slip	Spline (S)	Qty (S)	Type	Angle (F)	Part #	Notes
205.00	35.00			2		112.03.205	C-C
310.00	60.00			2		112.03.310	C-C / Less Dust Cover. Use 112.86

GWB Series: 687.20 Suits:802038 30.20 x 81.80

Length (L)	Total Slip	Spline (S)	Qty (S)	Type	Angle (F)	Part #	Notes
209.00	70.00					687.20.03.209LZ.X	Less Dust Cover 687.20.86 Can be Shortened to 166mm
295.00						687.20.03.295LZ	Can be Shortened to 190mm

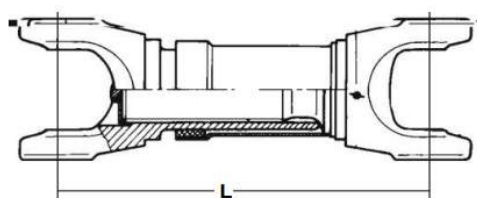
GWB Series: 687.30 Suits:K5A730 34.93 x 106.38

Length (L)	Total Slip	Spline (S)	Qty (S)	Type	Angle (F)	Part #	Notes
253.00						687.30.03.253LZ.X	Less Dust Cover 687.30.86
335.00	110.00			2		687.30.03.335LZ	C-C / Can be shortened to 230mm C-C

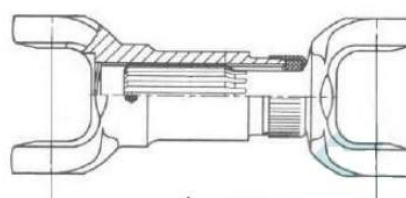
GWB Series: 587.15 Suits:K5A622 42.00 x 104.50

Length (L)	Total Slip	Spline (S)	Qty (S)	Type	Angle (F)	Part #	Notes
240.00	65.00			2		587.15.03.240LZ	C-C

Slip Yoke & Yoke Shaft



Type 2



Type 1

Only C/C assembly. See complete shaft section for more options.

Slip Yoke & Yoke Shaft

GWB Series: 687.35 Suits:802054 42.00 x 119.40

Length (L)	Total Slip	Spline (S)	Qty (S)	Type	Angle (F)	Part #	Notes
315.00	100.00			2		687.35.03.315	C-C / Can be shortened to 240mm C-C

GWB Series: 687.40 Suits:802043 47.63 x 135.17

Length (L)	Total Slip	Spline (S)	Qty (S)	Type	Angle (F)	Part #	Notes
260.00				2		687.40.03.260LZ	C-C
415.00	110.00			2		687.40.03.415LZ	Can be shortened to 245mm C-C with 50mm Slip

GWB Series: 587.20 Suits:U767 48.00 x 116.50

Length (L)	Total Slip	Spline (S)	Qty (S)	Type	Angle (F)	Part #	Notes
375.00	110.00			2		587.20.03.375LZ	C-C / 24° Can be shortened to 240mm C-C

GWB Series: 587.30 Suits:U756 52.00 x 133.00

Length (L)	Total Slip	Spline (S)	Qty (S)	Type	Angle (F)	Part #	Notes
257.00	60.00			2		587.30.03.257LZ	C-C / Can be shortened to 205mm C-C
390.00	110.00			2		587.30.03.390LZ	C-C / 24° / Can be shortened to 245mm C-C

GWB Series: 687.45 Suits:802029 52.00 x 147.20

Length (L)	Total Slip	Spline (S)	Qty (S)	Type	Angle (F)	Part #	Notes
336.00	110.00			2	25	687.45.03.336LZ	
430.00	110.00			2		687.45.03.430LZ	C-C / Can be shortened to 280mm C-C

GWB Series: 587.36 Suits:U813 57.00 x 144.00

Length (L)	Total Slip	Spline (S)	Qty (S)	Type	Angle (F)	Part #	Notes
430.00	110.00			2		587.35.03.430LZ	C-C / Can be shortened to 28mm C-C

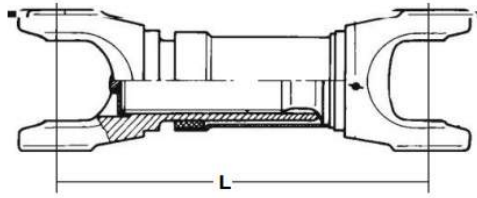
GWB Series: 587.42 / 687.55 Suits:U763 57.00 x 152.00

Length (L)	Total Slip	Spline (S)	Qty (S)	Type	Angle (F)	Part #	Notes
200.00						587.42.03.200LZ	
230.00	110.00			2		587.42.03.230LZ	C-C / 24° / Can be shortened to 210mm C-C
505.00	110.00			2		587.42.03.505LZ	C-C / 24° / Can be shortened to 315mm C-C

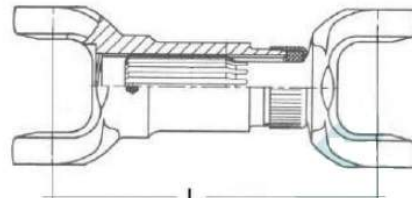
GWB Series: 587.48 / 687.65 Suits:K5A643 65.00 x 172.00

Length (L)	Total Slip	Spline (S)	Qty (S)	Type	Angle (F)	Part #	Notes
292.00	60.00			2		587.48.03.292LZ	C-C / 24°

Slip Yoke & Yoke Shaft



Type 2



Type 1

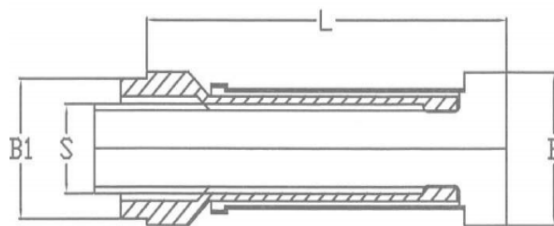
Only C/C assembly. See complete shaft section for more options.

Slip Yoke & Yoke Shaft

525.00	110.00	2	587.48.03.525LZ	C-C / 24° / Can be shortened to 325mm C-C
--------	--------	---	------------------------	---

525.00	110.00		587.48.03.525LZ	
--------	--------	--	------------------------	--

Stub & Barrel Assembly



Stub & Barrel Assembly

GWB Series: 587.20 Suits:U767 48.00 x 116.50

Spline (S)	Qty (S)	Length (L)	Length (L1)	Butt	Part #	Notes
55.00	20	280.00		75.20	587.20.45.280090	B1 suits 85x5 Tube
55.00	20	280.00		75.20	587.20.45.500.855	

GWB Series: 587.30 Suits:U756 52.00 x 133.00

Spline (S)	Qty (S)	Length (L)	Length (L1)	Butt	Part #	Notes
65.00	24	280.00		82.20	587.30.45.325	B1 suits 90x4 Tube
65.00	24	500.00		79.20	587.30.45.500.9055	
65.00	24	345.00		79.20	587.30.45.700.9055	B1 suits 90x5.5 Tube

GWB Series: 587.36 Suits:U813 57.00 x 144.00

Spline (S)	Qty (S)	Length (L)	Length (L1)	Butt	Part #	Notes
75.00	28	300.00		88.20	587.36.45.300	B1 suits 100.x Tube
75.00	28	500.00		88.20	587.36.45.500.1006	

GWB Series: 587.42 / 687.55 Suits:U763 57.00 x 152.00

Spline (S)	Qty (S)	Length (L)	Length (L1)	Butt	Part #	Notes
75.00	28				587.42.45.800	Barrel & Stub Butts 120mm
80.00	30	500.00		98.20	587.42.45.500.1106	Stub Butt 79mm
80.00	30	500.00		108.20	587.42.45.500.1206	A - Tub Butt 79mm
80.00	30	365.00		98.20	587.42.45.700C	B1 suits 110x6 Tube
80.00	30	770.00		98.20	587.42.45.770.1106	B1 suits 110x6 Tube

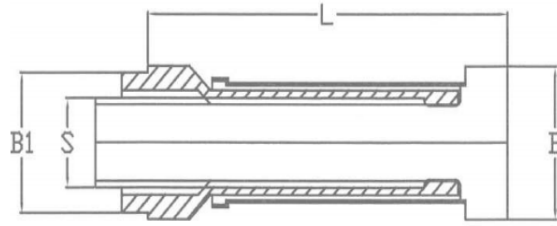
GWB Series: 587.48 / 687.65 Suits:K5A643 65.00 x 172.00

Spline (S)	Qty (S)	Length (L)	Length (L1)	Butt	Part #	Notes
90.00	34	500.00		130.20	587.48.45.500.1405R	Stub Butt 124mm
90.00	34	345.00		130.20	587.48.45.90	B1 suits 140x5 Tube. W - W L = 310mm

GWB Series: 587.55 Suits:K5A708 74.00 x 217.00

Spline (S)	Qty (S)	Length (L)	Length (L1)	Butt	Part #	Notes
120.00	44	245.00			587.55.45.115	Weld to Weld L = 215mm

Stub & Barrel Assembly



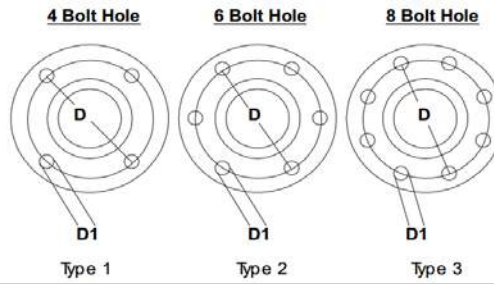
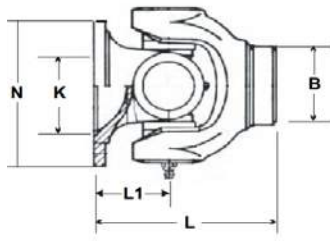
Stub & Barrel Assembly

127.00	280.00	154.40	587.55.45.127
--------	--------	--------	----------------------

GWB Series: 190.65 Suits:K5A628 95.00 x 190.00

Spline (S)	Qty (S)	Length (L)	Length (L1)	Butt	Part #	Notes
130.00		440.00			190.65.45.130	

Fixed Joint Assembly



Fixed Joint Assembly

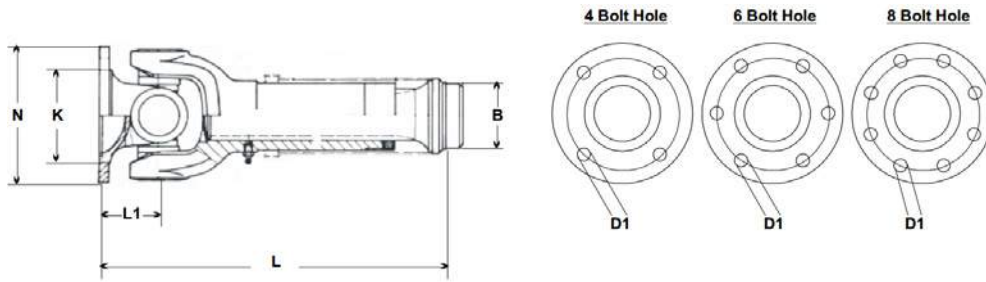
ELBE Series: 105 Suits:802024 17.00 x 41.00

OD (N)	Spigot (K)	PCD (D)	Holes (D1)	Qty (D1)	Length (L)	Length (L1)	Butt (B)	Part #	Notes
30.00	47.00	47.00	6.00	4	61.00	30.00	25.20	105.7.5845	Suits Tube 28x1.5

ELBE Series: 106 Suits:U901 19.00 x 48.00

OD (N)	Spigot (K)	PCD (D)	Holes (D1)	Qty (D1)	Length (L)	Length (L1)	Butt (B)	Part #	Notes
35.00	52.00	52.00	6.00	4	64.00	32.00	29.20	106.7.6546	Suits Tube 32x1.5

Slip Yoke, Stub & Flange Assembly



Slip Yoke, Stub & Flange

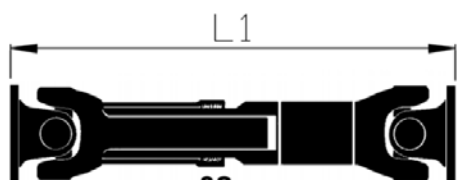
ELBE Series: 105 Suits:802024 17.00 x 41.00

OD (N)	Spigot (K)	Holes (D1)	Qty (D1)	Length (L)	Length (L1)	Butt (B)	Spline (S)	Qty (S)	Part #	Notes
58.00	30.00	6.00	4	167.02	30.00	25.20	19.75	12	105.6.5845	

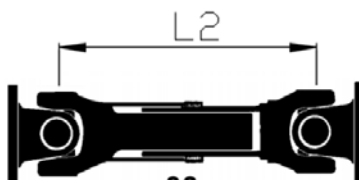
ELBE Series: 106 Suits:U901 19.00 x 48.00

OD (N)	Spigot (K)	Holes (D1)	Qty (D1)	Length (L)	Length (L1)	Butt (B)	Spline (S)	Qty (S)	Part #	Notes
65.00	35.00	6.00	4	167.00	29.33	29.20	24.40	14	106.6.6546	

Complete Shaft Assembly



.02
Prop Shaft Assembly



.03
Yoke Shaft Assembly



.04
Centre Bearing Shaft Assembly

Complete Shaft Assembly

ELBE Series: 105 Suits:802024 17.00 x 41.00

Length (L)	Length (L1)	Length (L2)	Total Slip	Brg Ø (P)	Type	Part #	Notes
	165.00		20.00			105.03.5845LZ	5845 Flanges fitted to both ends
	165.00		20.00			105.03.6546LZ	6546 Flanges fitted to both ends

ELBE Series: 106 Suits:U901 19.00 x 48.00

Length (L)	Length (L1)	Length (L2)	Total Slip	Brg Ø (P)	Type	Part #	Notes
	220.00		30.00			106.03.220LZ	6546 Flanges fitted to both ends

ELBE Series: 107 Suits:802004 22.00 x 58.00

Length (L)	Length (L1)	Length (L2)	Total Slip	Brg Ø (P)	Type	Part #	Notes
	250.00		35.00			107.03.250LZ	7548 Flanges fitted both ends

ELBE Series: 109 - New Suits:802039 28.50 x 70.90

Length (L)	Length (L1)	Length (L2)	Total Slip	Brg Ø (P)	Type	Part #	Notes
	225.00					109.03.225LZ	10068 Flanges fitted to both ends
	250.00					109.03.250LZ	10068 Flanges fitted to both ends
	290.00		85.00			109.03.290LZ	9068 Flanges fitted to both ends

ELBE Series: 110 Suits:802006 30.00 x 83.00

Length (L)	Length (L1)	Length (L2)	Total Slip	Brg Ø (P)	Type	Part #	Notes
	255.00		30.00			110.03.255LZ	10068 Flanges fitted to both ends

GWB Series: 292.50 Suits:5.370X 74.00 x 129.00

Length (L)	Length (L1)	Length (L2)	Total Slip	Brg Ø (P)	Type	Part #	Notes
	2500.00					292.50.02.250818	Unwelded with 250818 Flanges fitted on both ends

GWB Series: 190.50 Suits:5.316X 65.00 x 144.00

Length (L)	Length (L1)	Length (L2)	Total Slip	Brg Ø (P)	Type	Part #	Notes
	2500.00					190.50.02.205816	Unwelded with 225816 Flanges fitted on both ends

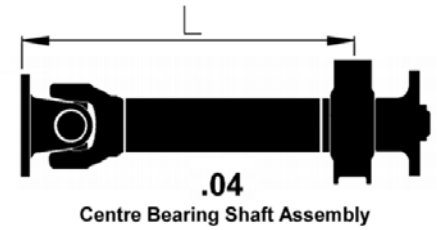
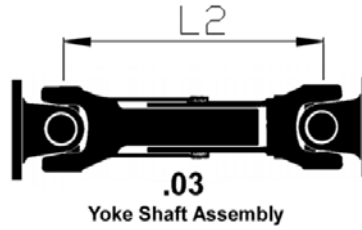
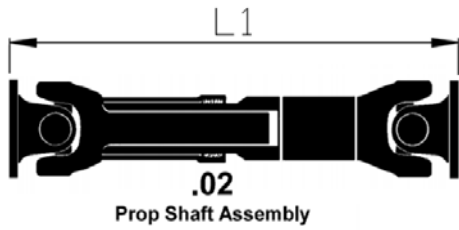
GWB Series: 687.45 Suits:802029 52.00 x 147.20

Length (L)	Length (L1)	Length (L2)	Total Slip	Brg Ø (P)	Type	Part #	Notes
	684.00	468.00				687.45.02.684LZ.G	Volvo Interaxle with 180KV Flanges both ends. LFL Splines, Greasable Joints

GWB Series: 587.42 / 687.55 Suits:U763 57.00 x 152.00

Length (L)	Length (L1)	Length (L2)	Total Slip	Brg Ø (P)	Type	Part #	Notes
	390.00					587.42.03.390LZ	1810 Face Flanges fitted to both ends. LFL Universal joints

Complete Shaft Assembly



Complete Shaft Assembly

GWB Series: 190.60 Suits:K5A627 83.00 x 175.00

Length (L)	Length (L1)	Length (L2)	Total Slip	Brg Ø (P)	Type	Part #	Notes
2500.00						190.60.2285820	Unwelded with 285820 Flanges fitted on both ends

GWB Series: 190.65 Suits:K5A628 95.00 x 190.00

Length (L)	Length (L1)	Length (L2)	Total Slip	Brg Ø (P)	Type	Part #	Notes
2500.00						190.65.02.315822	Unwelded with 315822 Flanges fitted on both ends

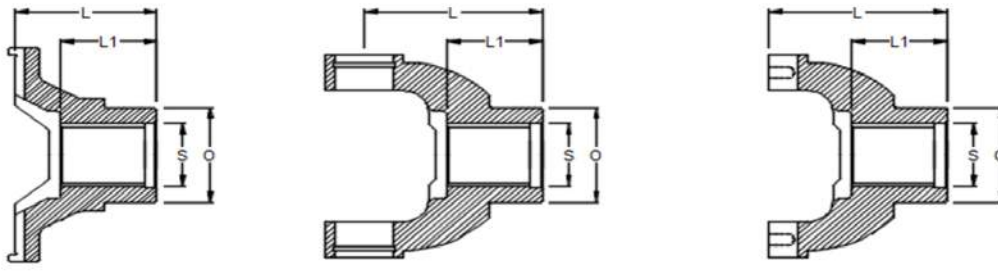
Mercedes Series: MER801001 Suits: 68.00 x 95.00

Length (L)	Length (L1)	Length (L2)	Total Slip	Brg Ø (P)	Type	Part #	Notes
2396.00						MER.02.801001.180KV	
2253.00						MER.04.801001.180KV	

Scania Series: P600 Suits:802036 65.00 x 190.00

Length (L)	Length (L1)	Length (L2)	Total Slip	Brg Ø (P)	Type	Part #	Notes
1910.00						SC.02.802036.208KV	
970.00						SC.04.802036.208KV	

End Yoke



End Yoke

ELBE Series: 204 Suits:802037 14.00 x 36.00

Spline (S)	Qty(S)	Hub (O)	Length (L)	Length (L1)	Angle	Location	Type	Part #	Notes
16.00					35			204.4.001	16mm Bore
16.00					45			204.4.002	16mm Bore

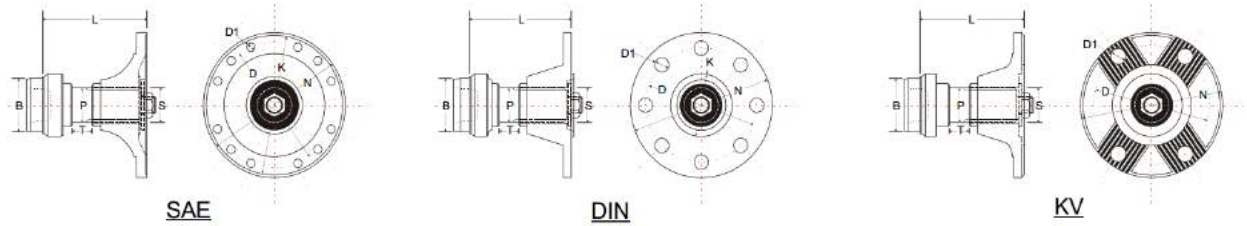
Scania Series: P40 / T61 Suits:802015 48.00 x 161.00

Spline (S)	Qty(S)	Hub (O)	Length (L)	Length (L1)	Angle	Location	Type	Part #	Notes
54.80	22	85.00						SC.4.904	Hub Seal Has Step

Scania Series: P50 / T71 Suits:802018 57.00 x 164.00

Spline (S)	Qty(S)	Hub (O)	Length (L)	Length (L1)	Angle	Location	Type	Part #	Notes
54.80	22	80.00						SC.4.905	Hub Seal Has Step

Midship Assembly



Midship Assembly

GWB Series: 687.30 Suits:K5A730 34.93 x 106.38

Tube Ø	Wall (T)	Butt (B)	Length (L)	Spline (S)	Qty (S)	Brg Ø (P)	Thread	Brg Part #	Part #	Notes
76.20	2.40	71.60	122.00	44.00	16.00	45		211447X	687.30.8.120411X.1	
88.90	2.40	84.30	120.00	45.00	16.00	45		211447X	687.30.8.1500000X	
90.00	3.00	84.20	127.00	44.45	16.00	19		211477X	687.30.8.150812X	150DIN Flange Face

GWB Series: 687.35 Suits:802054 42.00 x 119.40

Tube Ø	Wall (T)	Butt (B)	Length (L)	Spline (S)	Qty (S)	Brg Ø (P)	Thread	Brg Part #	Part #	Notes
100.00	3.00	94.20				45			687.35.8.150413X	150KV

GWB Series: 687.40 Suits:802043 47.63 x 135.17

Tube Ø	Wall (T)	Butt (B)	Length (L)	Spline (S)	Qty (S)	Brg Ø (P)	Thread	Brg Part #	Part #	Notes
90.00	4.50	81.20	163.00	55.00	20.00	55		211440X	687.40.8.150413X	
120.00	3.00	114.20	250.00			75		CB179	687.40.6.75	Sliding Assy .Inc Bearing & Gaiter

GWB Series: 587.36 Suits:U813 57.00 x 144.00

Tube Ø	Wall (T)	Butt (B)	Length (L)	Spline (S)	Qty (S)	Brg Ø (P)	Thread	Brg Part #	Part #	Notes
100.00	6.00	88.20	165.00	60.00	22.00	60		CB53, CB95, CB96	587.36.8.1800000X	
100.00	6.00	88.20	167.00	60.00	22.00	60		CB53, CB95, CB96	587.36.8.180415X	

GWB Series: 587.42 / 687.55 Suits:U763 57.00 x 152.00

Tube Ø	Wall (T)	Butt (B)	Length (L)	Spline (S)	Qty (S)	Brg Ø (P)	Thread	Brg Part #	Part #	Notes
120.00	6.00	108.20	289.00			85		CB180	587.42.6.85.1	Sliding Assy. Inc Bearing & Gaiter. OE Surplus Tube Cut Out.
140.00	5.00	130.20	178.00	70.00	26.00	70		CB54A	587.42.8.1801016X	
140.00	5.00	130.20	178.00	70.00	26.00	70		CB54A	587.42.8.180415X	Butt can be machined to 120x6

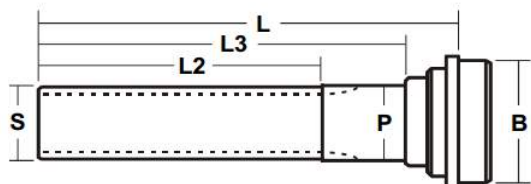
GWB Series: 687.60 Suits:802041 59.00 x 167.40

Tube Ø	Wall (T)	Butt (B)	Length (L)	Spline (S)	Qty (S)	Brg Ø (P)	Thread	Brg Part #	Part #	Notes
130.00	6.00	118.20	185.00	70.00	26.00	70		VOL.70.2 6	687.60.8.180415	INCLUDES VOL.70.26

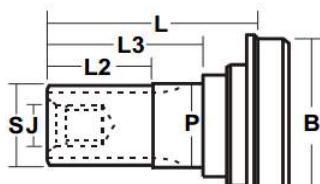
Volvo Series: VOL687.60 Suits:802041 59.00 x 167.40

Tube Ø	Wall (T)	Butt (B)	Length (L)	Spline (S)	Qty (S)	Brg Ø (P)	Thread	Brg Part #	Part #	Notes
130.00	6.00	118.20	185.00	70.00	26.00	70		VOL.70.2 6	687.60.8.180415	Includes VOL.70.26

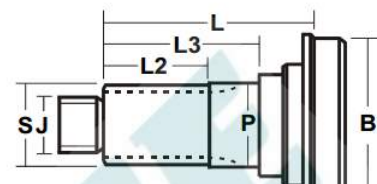
Midship Stub



Type 1.



Type 2.



Type 3.

Midship Stub

Mercedes Series: MERU730 Suits:U730 38.00 x 62.00

Spline Ø	Qty	Tube Ø	Wall (T)	Butt (B)	(L)	(L2)	(L3)	(P)	(J)	(TP)	Type	Part #	Notes
55.00	20	90.00	4.00	82.20	120.00		89.00	55	M16		2	MER.53.55	Suits tube 90 x 4

Mercedes Series: MERU752 Suits:U752 38.00 x 110.00

Spline Ø	Qty	Tube Ø	Wall (T)	Butt (B)	(L)	(L2)	(L3)	(P)	(J)	(TP)	Type	Part #	Notes
60.00	22	100.00	5.00	90.20	158.00		113.00	60	M16		2	MER.53.60	Suits tube 100 x 5

Mercedes Series: MERU765 Suits:U765 48.00 x 126.00

Spline Ø	Qty	Tube Ø	Wall (T)	Butt (B)	(L)	(L2)	(L3)	(P)	(J)	(TP)	Type	Part #	Notes
70.00	26							70				MER.53.70	140x5 Tube Suits MER.1.180415

Scania Series: P50 / T71 Suits:802018 57.00 x 164.00

Spline Ø	Qty	Tube Ø	Wall (T)	Butt (B)	(L)	(L2)	(L3)	(P)	(J)	(TP)	Type	Part #	Notes
59.50	24	100.00	4.50	91.20	135.00		75.00	60	M44		3	SC.54.91	SC.74.91 Nut 90 x 4.5 Tube
		108.00	5.50	97.20				60				SC.54.500	

Scania Series: P600 Suits:802036 65.00 x 190.00

Spline Ø	Qty	Tube Ø	Wall (T)	Butt (B)	(L)	(L2)	(L3)	(P)	(J)	(TP)	Type	Part #	Notes
54.80	22	100.00	4.50	91.20	135.00			60	M50		3	SC.54.613	SC.74.788 Nut
59.50	24	115.00	6.00	103.20	156.00		75.00	60	M44		3	SC.54.600	114.3 x 5.5 Tube MACHINE BUTT TO SUIT P500

Volvo Series: VOL300 Suits:U380 44.00 x 126.20

Spline Ø	Qty	Tube Ø	Wall (T)	Butt (B)	(L)	(L2)	(L3)	(P)	(J)	(TP)	Type	Part #	Notes
60.00	18	86.44	4.57	77.50	125.00			60	M40		3	VOL.53.300	VOL.40K Nut Kit

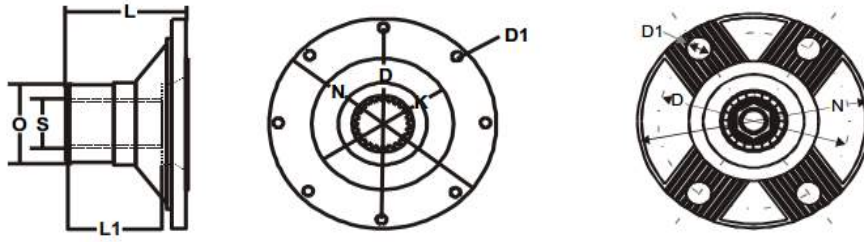
Volvo Series: VOL400 Suits:U381 50.00 x 152.60

Spline Ø	Qty	Tube Ø	Wall (T)	Butt (B)	(L)	(L2)	(L3)	(P)	(J)	(TP)	Type	Part #	Notes
60.00	18							60				VOL.53.400	

Volvo Series: VOL500/600 Suits:803002 57.00 x 152.60

Spline Ø	Qty	Tube Ø	Wall (T)	Butt (B)	(L)	(L2)	(L3)	(P)	(J)	(TP)	Type	Part #	Notes
69.50	21	100.00	6.00	88.20	102.00		37.00	70	M60		3	VOL.53.500	VOL.60K Nut Kit
69.50	21	115.00	6.00	103.20	102.00		37.00	70	M60		3	VOL.53.600	VOL.60K Nut Kit

Midship Companion Flange



Midship Companion Flange

GWB Series: 687.30 Suits:K5A730 34.93 x 106.38

Bore (S)	Qty (S)	OD (N)	Spigot (K)	PCD (D)	Hole (D1)	Hole (D1)	(D2)	(D3)	FC (L)	DTH (L1)	Hub (O)	Part #	Notes
45.00	16	120.00		100.00	11.00	4						687.30.1.120411	Suits 687.30.8.120411X Assembly

GWB Series: 587.20 Suits:U767 48.00 x 116.50

Bore (S)	Qty (S)	OD (N)	Spigot (K)	PCD (D)	Hole (D1)	Hole (D1)	(D2)	(D3)	FC (L)	DTH (L1)	Hub (O)	Part #	Notes
55.00	20	203.00	196.80	184.10	11.20	8						587.20.1.1710	Use 687.40.8.150413X Assembly

GWB Series: 587.36 Suits:U813 57.00 x 144.00

Bore (S)	Qty (S)	OD (N)	Spigot (K)	PCD (D)	Hole (D1)	Hole (D1)	(D2)	(D3)	FC (L)	DTH (L1)	Hub (O)	Part #	Notes
60.00	22	180.00	110.00							89.00		587.36.1.180000	Blank Face / Suits 587.36.53.60
60.00	22	203.00	196.80	184.10	11.20	12						587.36.1.1810	Suits 587.36 Midship

GWB Series: 587.42 / 687.55 Suits:U763 57.00 x 152.00

Bore (S)	Qty (S)	OD (N)	Spigot (K)	PCD (D)	Hole (D1)	Hole (D1)	(D2)	(D3)	FC (L)	DTH (L1)	Hub (O)	Part #	Notes
59.71	16	180.00		150.00	15.00	4				110.00	69.7	587.42.1.1891KV	Suits 6.53.311 / 6.5.53.91
70.00	26	180.00	110.00	155.50	16.00	10				85.50		587.42.1.1801016	Suits 587.42.53.70 / Use 587.42.8.1801016X

Mercedes Series: MERU752 Suits:U752 38.00 x 110.00

Bore (S)	Qty (S)	OD (N)	Spigot (K)	PCD (D)	Hole (D1)	Hole (D1)	(D2)	(D3)	FC (L)	DTH (L1)	Hub (O)	Part #	Notes
55.00	20	150.00			13.00	4					82	MER.1.150413.55	MER.53.55 Midship KV
60.00	22	150.00		130.00	13.00	4			74.10	97.50	90	MER.1.150413.60	Suits MER.53.60 / Washer MER.72.60 / Bolt MER.73.55
70.00	26	180.00		150.00	15.00	4						MER.1.180415	Suits MER.53.70 / MER.53.70.1

Mercedes Series: MERU753 Suits:U753 45.00 x 120.40

Bore (S)	Qty (S)	OD (N)	Spigot (K)	PCD (D)	Hole (D1)	Hole (D1)	(D2)	(D3)	FC (L)	DTH (L1)	Hub (O)	Part #	Notes
55.00	20	150.00	90.00	130.00	12.20	8			70.10	82.00	66	MER.1.150812.55	Suits MER.53.55 / Use with CB55
55.00	20	150.00	90.00		12.00	8					66.3	MER.1.150812.55	MER.53.55 Midship

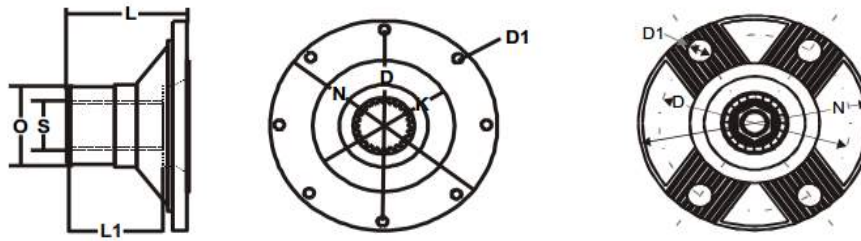
Scania Series: P600 Suits:802036 65.00 x 190.00

Bore (S)	Qty (S)	OD (N)	Spigot (K)	PCD (D)	Hole (D1)	Hole (D1)	(D2)	(D3)	FC (L)	DTH (L1)	Hub (O)	Part #	Notes
59.54	24	208.00		180.00	15.00	4			70.10	82.00	66	SC.1.208415	P600 Series Suits SC.54.600

Volvo Series: VOL300 Suits:U380 44.00 x 126.20

Bore (S)	Qty (S)	OD (N)	Spigot (K)	PCD (D)	Hole (D1)	Hole (D1)	(D2)	(D3)	FC (L)	DTH (L1)	Hub (O)	Part #	Notes
60.00	18	175.00	168.30	155.60	9.53	8						VOL.1.300	1610 Bolt pattern, VOL.53.300 M/S Stub

Midship Companion Flange



Midship Companion Flange

Volvo Series: **VOL400** Suits: **U381 50.00 x 152.60**

Bore (S)	Qty (S)	OD (N)	Spigot (K)	PCD (D)	Hole (D1)	Hole (D1)	(D2)	(D3)	FC (L)	DTH (L1)	Hub (O)	Part #	Notes
60.00	18	203.00	196.90	184.20	9.53	8						VOL.1.400	1710 Bolt pattern, VOL.53.400 M/S Stub
60.00	18	203.00	196.90	184.20	11.13	12						VOL.1.400.1	1810 Bolt pattern, VOL.53.400 M/S Stub

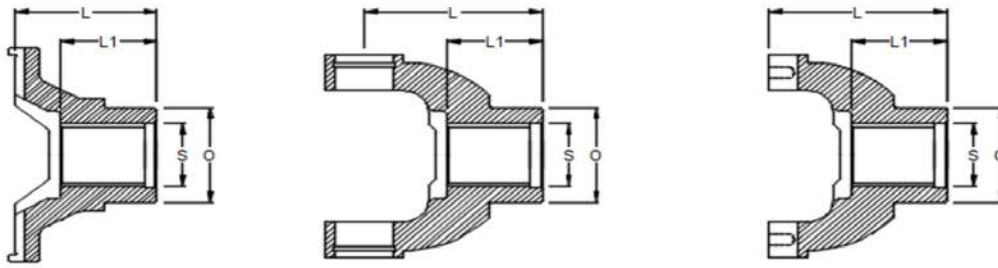
Volvo Series: **VOL500/600** Suits: **803002 57.00 x 152.60**

Bore (S)	Qty (S)	OD (N)	Spigot (K)	PCD (D)	Hole (D1)	Hole (D1)	(D2)	(D3)	FC (L)	DTH (L1)	Hub (O)	Part #	Notes
69.50	21	203.00	196.90	184.20	11.13	12						VOL.1.500	1810 Bolt pattern, VOL.53.500 M/S Stub

European Series: **European Generic** Suits: **x**

Bore (S)	Qty (S)	OD (N)	Spigot (K)	PCD (D)	Hole (D1)	Hole (D1)	(D2)	(D3)	FC (L)	DTH (L1)	Hub (O)	Part #	Notes
65.00	31	180.00		150.00	15.00	4			84.90	76.20	63.2	MAN.1.180415	Midship stub MAN.53.65

Midship End Yoke



Midship End Yoke

Scania Series: P30 / T51 Suits:802009 38.00 x 148.00

Spline (S)	Qty(S)	Length (L)	Length (L1)	Type	Part #	Notes
54.80	22				SC.4.P3022	SC.54.613 CB103 Picture Not Shown

Scania Series: T60 Suits:U384 44.00 x 148.00

Spline (S)	Qty(S)	Length (L)	Length (L1)	Type	Part #	Notes
58.40	22				SC.4.133	Picture Not Shown

Scania Series: P40 / T61 Suits:802015 48.00 x 161.00

Spline (S)	Qty(S)	Length (L)	Length (L1)	Type	Part #	Notes
54.80	22				SC.4.624	SC.54.613 Mid Ship Stub. SC.74.788 Nut
59.50	24				SC.4.P4024	SC.54.91 CB104

Scania Series: T70 Suits:U386 50.00 x 164.00

Spline (S)	Qty(S)	Length (L)	Length (L1)	Type	Part #	Notes
54.80	22				SC.4.397	Picture Not Shown
54.80	22				SC.4.513	Hub Seal Has No Step. Picture Not Shown.

Scania Series: P50 / T71 Suits:802018 57.00 x 164.00

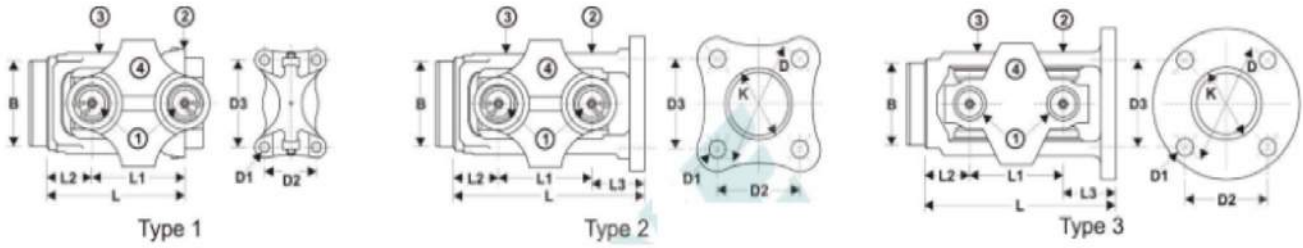
Spline (S)	Qty(S)	Length (L)	Length (L1)	Type	Part #	Notes
54.80	22				SC.4.625	SC.54.613 Mid Ship Stub, SC.74.788 Nut, Hub Seal Has No Step
59.50	24				SC.4.P5024	SC.54.600 (Machine Butt), CB104

Scania Series: P600 Suits:802036 65.00 x 190.00

Spline (S)	Qty(S)	Length (L)	Length (L1)	Type	Part #	Notes
59.50	24				SC.4.P6024	SC.54.600, CB104. Picture Not Shown

Double Cardan

Double Cardan



GWB Series: 687.20 Suits:802038 30.20 x 81.80

Universal Joint	Centre 'H' Yoke	Flange Yoke	Weld Yoke	Centering	Part #	Application
					800R687.20.1410	
					800R687.20.1410SF	
					800R687.20.6.1410	
					800R687.20.6.1410SF	
					800R687.20.IS	

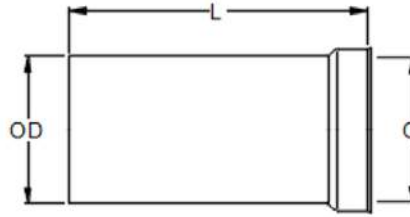
GWB Series: 687.30 Suits:K5A730 34.93 x 106.38

Universal Joint	Centre 'H' Yoke	Flange Yoke	Weld Yoke	Centering	Part #	Application
K5A730	687.30.29CV	687.30.2.120810C V	687.30.28CV		800R687.30.150812	
					800R687.30.150812LFL	
K5A730	687.30.29CV	687.30.2.1510CV	687.30.28CV		800R687.30.1510	

GWB Series: 587.20 Suits:U767 48.00 x 116.50

Universal Joint	Centre 'H' Yoke	Flange Yoke	Weld Yoke	Centering	Part #	Application
U767	587.20.26.12760	587.20.2.12763	587.20.28.12775		587.20.800R1610	SAE
U767	587.20.26.12760	587.20.2.12761	587.20.28.12775		587.20.800R340	
U767	587.20.26.12760	587.20.2.12768	587.20.28.12775		587.20.800R6C	

Dust Cover



Dust Cover

ELBE Series: 112 Suits:802040 35.00 x 97.00

Length (L)	Hub (O)	Tube Ø (OD)	Wall Thickness	Part #	Notes
140.00	52.00	60.00	1	112.86.1	
148.00	52.00	60.00	1	112.86	

GWB Series: 687.15 Suits:K5A727 27.00 x 74.50

Length (L)	Hub (O)	Tube Ø (OD)	Wall Thickness	Part #	Notes
114.00	44.00	51.00	2	687.15.86	

GWB Series: 687.20 Suits:802038 30.20 x 81.80

Length (L)	Hub (O)	Tube Ø (OD)	Wall Thickness	Part #	Notes
95.00	50.00	63.00	2	687.20.86	

GWB Series: 687.30 Suits:K5A730 34.93 x 106.38

Length (L)	Hub (O)	Tube Ø (OD)	Wall Thickness	Part #	Notes
				687.30.86	
135.00	60.00	70.00	2	687.30.86	

GWB Series: 587.15 Suits:K5A622 42.00 x 104.50

Length (L)	Hub (O)	Tube Ø (OD)	Wall Thickness	Part #	Notes
147.00		75.00	3	587.15.86.89	

GWB Series: 687.40 Suits:802043 47.63 x 135.17

Length (L)	Hub (O)	Tube Ø (OD)	Wall Thickness	Part #	Notes
122.00	75.00	83.80	2	687.40.86.132	

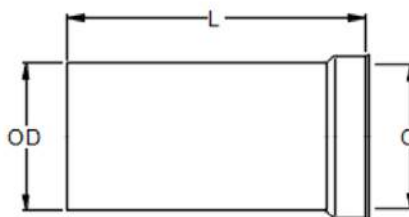
GWB Series: 587.20 Suits:U767 48.00 x 116.50

Length (L)	Hub (O)	Tube Ø (OD)	Wall Thickness	Part #	Notes
148.00	65.00	76.20	2	587.20.86	
160.00	70.00	82.10	3	587.20.86.1	

GWB Series: 587.30 Suits:U756 52.00 x 133.00

Length (L)	Hub (O)	Tube Ø (OD)	Wall Thickness	Part #	Notes
155.00	80.00	91.40	3	587.30.86.155	
163.00	80.00	92.00	3	587.30.86	Also suits MER.6.765

Dust Cover



Dust Cover

GWB Series: 687.45 Suits:802029 52.00 x 147.20

Length (L)	Hub (O)	Tube Ø (OD)	Wall Thickness	Part #	Notes
132.00	80.00	91.00	3	687.45.86.132	

GWB Series: 587.36 Suits:U813 57.00 x 144.00

Length (L)	Hub (O)	Tube Ø (OD)	Wall Thickness	Part #	Notes
95.00	90.00	98.00	3	587.35.86.095	
166.00	90.00	98.00	3	587.36.86.166	

GWB Series: 587.42 / 687.55 Suits:U763 57.00 x 152.00

Length (L)	Hub (O)	Tube Ø (OD)	Wall Thickness	Part #	Notes
210.00	93.00	106.00	3	587.42.86	
210.00	93.00	102.00	2	587.42.86.1	

GWB Series: 587.48 / 687.65 Suits:K5A643 65.00 x 172.00

Length (L)	Hub (O)	Tube Ø (OD)	Wall Thickness	Part #	Notes
210.00	110.00	122.00	3	587.48.86	Also suits 10C.6.1006
210.00	110.00	122.00	3	587.48.86	Suits 9C.6.11575, 10C.6.1006 & 11C.6.1106



DRIVELINE
SERVICES AUSTRALIA
THE UNDERBODY & POWER TRANSMISSION SPECIALISTS



CONTACT US

Head Office: 56 Colebard Street East Acacia Ridge,
Queensland 4110, Australia

**THE DRIVELINE GROUP IS A NATIONAL NETWORK OF
OVER 100 STAFF AND THIRTEEN FULLY EQUIPPED BRANCHES.**

**BRISBANE | BROKEN HILL | COBAR | DUBBO | MACKAY | PERTH
MELBOURNE | NEWCASTLE | TASMANIA | SYDNEY | TOWNSVILLE**