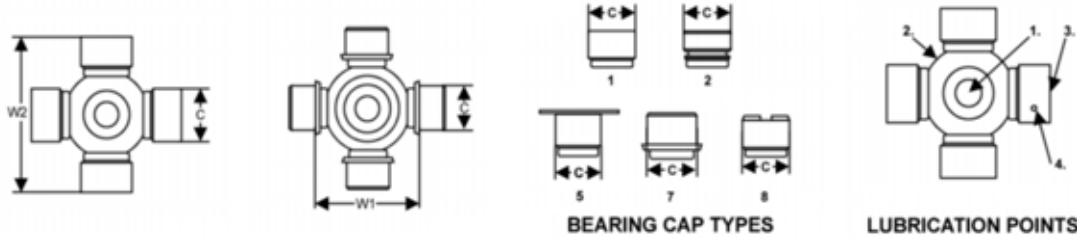


ORDER OF PAGES

- **Dimensional Data**
- **Bored & Keyed Companion Flange**
- **Splined Companion Flange**
- **Automotive Slip-Yoke**
- **Flange Yoke**
- **Slip Yoke**
- **Yoke Shaft & Barrel / Slip & Stub Assembly**
- **Weld Yoke**
- **Stub**
- **Barrel**
- **Yoke Shaft**
- **Slip Yoke & Yoke Shaft**
- **Complete Shaft Assembly**
- **End Yoke**
- **Midship Assembly**
- **Midship Stub**
- **Midship End Yoke**
- **Midship Companion Flange**
- **Midship Small Parts**
- **Double Cardan**
- **Double Cardan Dimensional Data**
- **Dust Cap**
- **Welch Plug**
- **U-bolts**
- **Weight**

General Dimension Data



Dimensional Data

Spicer

Uni Cap Ø (C)	Uni Width (W2)	Uni Width Type	Cap Qty	Cap Type	Fig	Part #	Lube	Notes
SPICER								
19.05	52.00	W2						0500
23.80	38.10	W1	4	2	1	5.170X	1	1000
23.80	61.20	W2	4	1	2	K5LGB80R	2	1140
26.99	61.93	W2	4	1	2	5.443X	2	1210
26.99	74.61	W2	4	1	2	K5L4R	2	1300
26.99	81.76	W2	4	1	2	K5.13XR	2	1310
26.99	92.08	W2	4	1	2	RUJ3002	2	1330
30.16	92.08	W2	4	1	2	5.178X	2	1350
30.16	92.08	W2	4	1	2	5.627X	NON	1350
30.16	106.35	W2	4	1	2	K5GB10R	2	1410
34.93	94.03	W1						1555
34.93	106.38	W2	4	1	2	5.188X	2	1480
34.93	126.20	W2	4	1	2	5.155X	2	1550
39.70	115.90	W2	4	1	2	K5GB22R	2	1510
39.70	115.90	W2	4	5	3	K5GB15R	2	1500
39.70	115.90	W2	4	1	2	K5GB22R	2	1630
41.28	142.00	W2	4	1	2	5.165X	2	1650
47.63	134.94	W2	4	5	3	5.279X	2	1610
47.63	134.94	W2						1610HR
49.21	154.78	W2	4	5	3	5.280X	2	1710
49.21	177.80	W2	4	5	3	5.407X	2	1760
49.21	191.69	W2	4	5	3	5.281X	2	1810
55.55	205.59	W2	4	5	3	5.308X	2	1880
55.55	205.59	W2	4	1	2	5.185X	2	1850
59.10	167.49	W2	4	5	3	5.124X	2	1800
71.43	223.04	W2	4	8	3	5.54X	2	1900

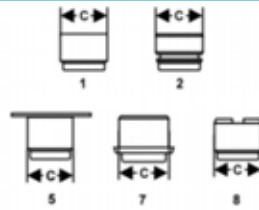
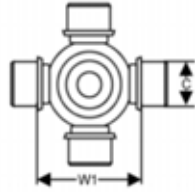
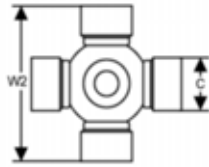
SPL

Uni Cap Ø (C)	Uni Width (W2)	Uni Width Type	Cap Qty	Cap Type	Fig	Part #	Lube	Notes
41.28	126.00	W2	4	1	2	SPL90X	2	SPL90
49.20	138.71	W2	4	1	2	SPL140X	1	SPL140
55.00	164.00	W2	4	1	2	SPL170X	1	SPL170
60.00	163.00	W2	4	1	2	SPL250X	1	SPL250

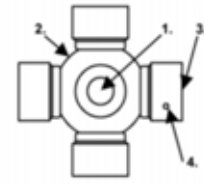
RPL

Uni Cap Ø (C)	Uni Width (W2)	Uni Width Type	Cap Qty	Cap Type	Fig	Part #	Lube	Notes
---------------	----------------	----------------	---------	----------	-----	--------	------	-------

General Dimension Data



BEARING CAP TYPES



LUBRICATION POINTS

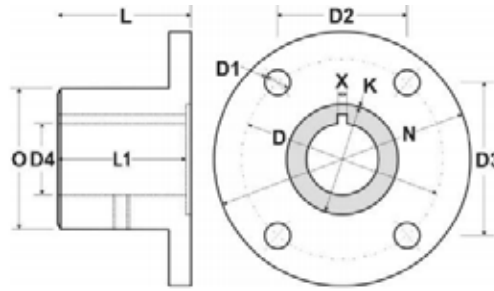
Dimensional Data

52.35	174.75	W2	2	1	8	CP20RPLS	NON	RPL20
52.35	208.28	W2	2	1	8	CP25RPLS	NON	RPL25



DRIVELINE
SERVICES AUSTRALIA

Bored & Keyed Companion Flange



Bored & Keyed Companion

Spicer Series: 1140 Suits:K5LGB80R 23.80 x 61.20

Bore (S)	Key (X)	OD (N)	Spigot (K)	PCD (D)	Hole (D1)	Qty (D1)	(D2)	(D3)	FC (L)	DTH (L1)	Hub (O)	Part #	Notes
12.70		87.88	57.15	69.85	7.92		44.96	54.10	53.98	38.10	50.80	1.1.PB	Solid Boss
0.500		3.460	2.250	2.750	0.312	4	1.770	2.130	2.125	1.500	2.000		

Spicer Series: 1310 Suits:K5.13XR 26.99 x 81.76

Bore (S)	Key (X)	OD (N)	Spigot (K)	PCD (D)	Hole (D1)	Qty (D1)	(D2)	(D3)	FC (L)	DTH (L1)	Hub (O)	Part #	Notes
19.05		98.43	60.33	79.38	9.52		51.05	60.70	52.96	51.05	64.77	2.1.PB	
0.750		3.875	2.375	3.125	0.375	4	2.010	2.390	2.085	2.010	2.550		
22.23	4.75	98.43	60.33	79.38	9.52		51.05	60.70	52.96	51.05	64.77	2.1.623	
0.875	0.187	3.875	2.375	3.125	0.375	4	2.010	2.390	2.085	2.010	2.550		
25.40	6.35	98.43	60.33	79.38	9.52		51.05	60.70	52.96	51.05	64.77	2.1.283	
1.000	0.250	3.875	2.375	3.125	0.375	4	2.010	2.390	2.085	2.010	2.550		
28.57	7.95	98.43	60.33	79.38	9.52		51.05	60.70	52.96	51.05	64.77	2.1.303	
1.125	0.313	3.875	2.375	3.125	0.375	4	2.010	2.390	2.085	2.010	2.550		
28.58	6.35	98.43	60.33	79.38	9.52		51.05	60.70	52.96	51.05	64.77	2.1.293	
1.125	0.250	3.875	2.375	3.125	0.375	4	2.010	2.390	2.085	2.010	2.550		
31.75	7.95	98.43	60.33	79.38	9.52		51.05	60.70	52.96	51.05	64.77	2.1.333	
1.250	0.313	3.875	2.375	3.125	0.375	4	2.010	2.390	2.085	2.010	2.550		
34.93	7.95	98.43	60.33	79.38	9.52		51.05	60.70	52.96	51.05	64.77	2.1.903	
1.375	0.313	3.875	2.375	3.125	0.375	4	2.010	2.390	2.085	2.010	2.550		

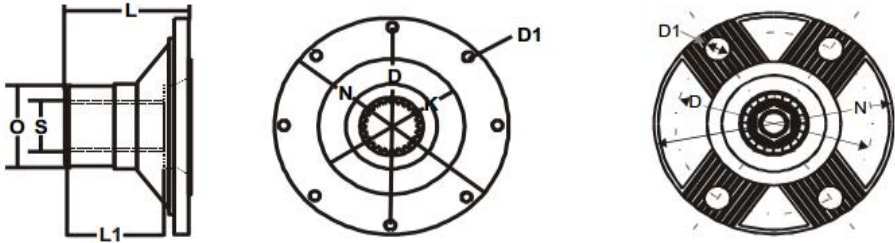
Spicer Series: 1350 Suits:5.178X 30.16 x 92.08

Bore (S)	Key (X)	OD (N)	Spigot (K)	PCD (D)	Hole (D1)	Qty (D1)	(D2)	(D3)	FC (L)	DTH (L1)	Hub (O)	Part #	Notes
19.05		115.78	69.85	95.25	11.12		61.20	72.90	64.77	63.00	73.02	3.1.PB	Pilot Bore Only
0.750		4.558	2.750	3.750	0.438	4	2.409	2.870	2.550	2.480	2.875		
31.75	7.95	115.78	69.85	95.25	11.12		61.20	72.90	64.77	63.00	73.02	3.1.163	
1.250	0.313	4.558	2.750	3.750	0.438	4	2.409	2.870	2.550	2.480	2.875		
38.10	9.52	115.78	69.85	95.25	11.12		61.20	72.90	64.77	63.00	73.02	3.1.333	
1.500	0.375	4.558	2.750	3.750	0.438	4	2.409	2.870	2.550	2.480	2.875		

Spicer Series: 1510 Suits:K5GB22R 39.70 x 115.90

Bore (S)	Key (X)	OD (N)	Spigot (K)	PCD (D)	Hole (D1)	Qty (D1)	(D2)	(D3)	FC (L)	DTH (L1)	Hub (O)	Part #	Notes
31.75			95.25	120.60	12.70		77.50	92.40	63.50	60.96	95.25	4.1.PB	Pilot Bore Only
1.250			3.750	4.750	0.500	4	3.051	3.638	2.500	2.400	3.750		

Splined Companion Flange



Splined Companion Flange

Spicer Series: 1350 Suits:5.178X 30.16 x 92.08

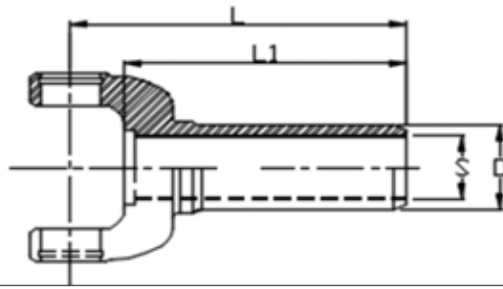
Spline (S)	Qty (S)	OD (N)	Spigot (K)	PCD (D)	Hole (D1)	Qty (D1)	(D2)	(D3)	FC (L)	DTH (L1)	Hub (O)	Part #	Notes
				3.75									
			2.750		0.438	4	2.409	2.870	2.325	1.772		3.1.032	Clamp Lock Type
1.250	14		69.85	95.25	11.20	4	61.20	72.90	59.05			3.1.06	Clamp Lock Type
25.40	15	116.00	69.85	95.25	11.12		61.20	72.90	59.05	45.00			
1.000		4.567	2.750	3.750	0.438	4	2.409	2.870	2.325	1.772		3.1.104	Clamp Lock Type
34.93	21	116.00	69.85	95.25	11.12		61.20	72.90	59.05	45.00			
1.375		4.567	2.750	3.750	0.438	4	2.409	2.870	2.325	1.772		3.1.07	Clamp Lock Type
34.93	6	116.00	69.85	95.25	11.12		61.20	72.90	59.05	45.00			
1.375		4.567	2.750	3.750	0.438	4	2.409	2.870	2.325	1.772		3.1.33	Clamp Lock Type
36.00	8	116.00	69.85	95.25	11.12		61.20	72.90	59.05	45.00			
1.417		4.567	2.750	3.750	0.438	4	2.409	2.870	2.325	1.772		3.1.115	Clamp Lock Type
44.45	13	116.00	69.85	95.25	11.12		61.20	72.90	59.05	45.00			
1.750		4.567	2.750	3.750	0.438	4	2.409	2.870	2.325	1.772		3.1.13	Clamp Lock Type

Spicer Series: 1550 Suits:5.155X 34.93 x 126.20

Spline (S)	Qty (S)	OD (N)	Spigot (K)	PCD (D)	Hole (D1)	Qty (D1)	(D2)	(D3)	FC (L)	DTH (L1)	Hub (O)	Part #	Notes
40.64	14		95.20							49.30	53.98	4.1.0064	Takes Seal 235751
1.600													
48.82	14		95.20						85.00	55.40	60.00	4.1.0051	Takes Seal 230954
1.922													



Automotive Slip-Yoke



Automotive Slip-Yoke

Spicer Series: 1140 Suits:K5LGB80R 23.80 x 61.20

Spline (S)	Qty (S)	Length (L)	Length (L1)	Hub (O)	Part #	Application
22.23 0.875	16	140.50 5.525	115.00 4.525	30.20 1.188	1.3.2418	Escort - while stocks last
28.27 1.113	25	149.00 5.875	120.00 4.725	34.90 1.375	1.3.8431X	Early Ford Transit

Spicer Series: 1210 Suits:5.443X 26.99 x 61.93

Spline (S)	Qty (S)	Length (L)	Length (L1)	Hub (O)	Part #	Application
0.807	18	131.00		29.95	2.3.1498B	Datsun 120Y, 1200, Sunny, C20
25.35 0.998	22	152.40 6.000	125.00 4.925	34.90 1.375	2.3.0686X	Mazda (20 + 2 Blank Splines)
25.52 1.005	24	152.40 6.000	125.00 4.925	34.90 1.375	2.3.1224X	Nissan (22 + 2 Blank Splines)
27.99 1.102	21	152.40 6.000	125.00 4.925	37.90 1.492	2.3.2321X	Toyota (21 Involute Spline)
28.27 1.113	25	145.00 5.710	107.00 4.212	38.10 1.500	2.3.3318	Mazda
29.87 1.176	27	153.00 6.025	103.00 4.055	38.10 1.500	2.3.1188	Holden

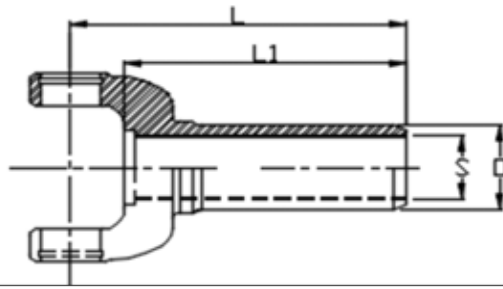
Spicer Series: 1300 Suits:K5L4R 26.99 x 74.61

Spline (S)	Qty (S)	Length (L)	Length (L1)	Hub (O)	Part #	Application
29.84 1.175	27	150.00 5.905	118.00 4.645	38.10 1.500	K2.3.1188	Holden

Spicer Series: 1310 Suits:K5.13XR 26.99 x 81.76

Spline (S)	Qty (S)	Length (L)	Length (L1)	Hub (O)	Part #	Application
25.35 0.998	22	152.00 5.984	117.50 4.625	34.90 1.375	2.3.3328	Mazda
25.52 1.005	24	153.00 6.025	117.50 4.625	34.90 1.375	2.3.13461X	Nissan
26.13 1.118	26	154.00 6.060	116.00 4.560	37.90 1.490	2.3.13891X	Nissan VL. Can use 21R.3.3140
27.96 1.100	21	153.00 6.025	107.00 4.225	38.10 1.500	2.3.9701X	Toyota
28.27 1.112	25	152.00 5.984	117.50 4.625	38.10 1.500	2.3.3318.1	Ford/Mazda
28.27 1.112	25	166.00 6.535	142.00 5.590	34.90 1.375	2.3.8431X	Ford Transit
30.20 1.187	27	139.00 5.472	115.00 4.525	38.10 1.500	2.3.6081X	Holden
30.98 1.218	28	165.10 6.500	145.00 5.710	38.10 1.500	2.3.8251X	Ford C4 - Top Loader , Some Early Commodore T5's

Automotive Slip-Yoke



Automotive Slip-Yoke

32.61 1.284	30	157.00 6.181	118.00 4.646	41.90 1.650	2.3.13311X	VL Turbo / Nissan
33.32 1.312	30	204.70 8.059	168.00 6.615	42.70 1.680	2.3.3575X	Chrysler (Torqueflight)
35.10 1.382	31	177.80 7.000	120.00 4.725	42.75 1.683	2.3.15631X	C6
35.48 1.397	32	180.00 7.086	137.00 5.393	47.90 1.885	2.3.9131X	Turbo 400

Spicer Series: 1330 Suits:RUJ3002 26.99 x 92.08

Spline (S)	Qty (S)	Length (L)	Length (L1)	Hub (O)	Part #	Application
1.382	31	5.980	4.720	1.89	2.3.6041X	C6, FMX
30.22 1.190	27	174.00 6.850	120.00 4.724	38.10 1.500	2.3.9921X	Holden Powerglide
30.98 1.220	28	150.00 5.906	128.50 5.059	38.10 1.500	2.3.5981X	Ford C4 - Top Loader, Some Early Commodore T5's
35.10 31.000		178.00		47.90	2.3.10201X	BW T/CASE NEW PROCESS
35.30	31	178.00		47.90	2.3.10201X	T/Case New Process Borg Warner F-Truck/Bronco

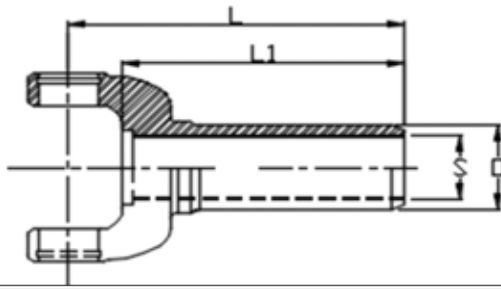
Spicer Series: 1350 Suits:5.178X 30.16 x 92.08

Spline (S)	Qty (S)	Length (L)	Length (L1)	Hub (O)	Part #	Application
28.27	25	155.00	120.00	37.95	3.3.3318	Mazda Turbo
29.84 1.175	27	176.00 6.929	145.00 5.708	38.10 1.500	3.3.4281X	T350/700 For P/glide Shorten to 100mm Sleeve Length
30.48 1.200	23	156.70 6.169	112.00 4.409	39.95 1.572	3.3.3558	Toyota Supra Turbo KUN150 2WD Lexus Iload
30.90 1.216	28	165.10 6.500	145.00 5.710	38.10 1.500	3.3.3158	C4, C10, TOP LOADER, SOME EARLY COMMODORE T5's
34.93 1.375	31	163.50 6.437	133.00 5.236	42.70 1.681	3.3.2491X	Ford C6 - FMX
35.00 1.378	32	154.94 6.100		43.98 1.731	3.3.7091X	Nissan 350 & 370Z's Counter Bored
35.48 1.397	32	201.00 7.913	150.00 5.905	47.90 1.886	3.3.1538	Turbo 400 (counterbored)
35.48 1.397	32	201.00 7.913	150.00 5.905	47.90 1.886	3.3.2951X	GM - USA

Spicer Series: 1350 Performance Suits:5.627X 30.16 x 92.08

Spline (S)	Qty (S)	Length (L)	Length (L1)	Hub (O)	Part #	Application
30.20 1.188	27	147.60 5.811	110.30 4.342	38.18 1.503	3.3.39005	PERFORMANCE Powerglide / Turbo 350

Automotive Slip-Yoke



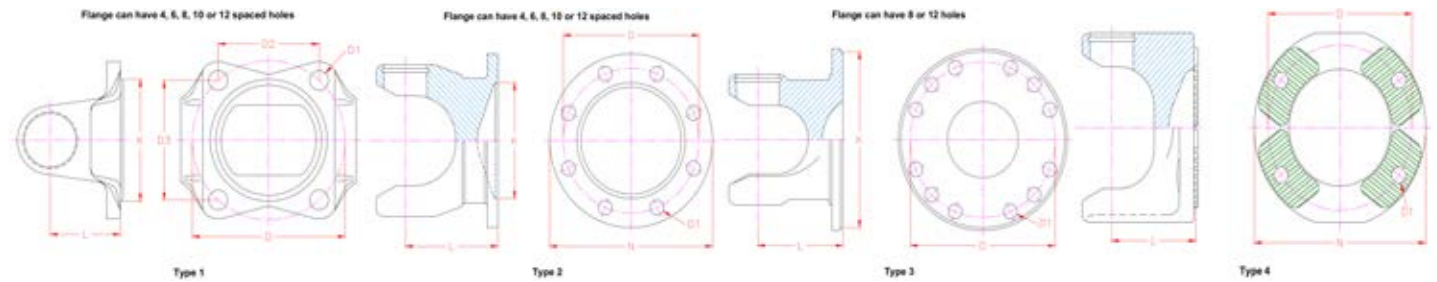
Automotive Slip-Yoke

30.20 1.188	27	147.60 5.811	110.30 4.342	38.10 1.500	3.3.39035	PERFORMANCE Powerglide Hardened for Roller Bearing Trans.
30.40 1.196	28	156.00 6.141	130.00 5.118	38.10 1.500	3.3.39022	PERFORMANCE Ford C4/Toploader, Some Early Commodore T5's
33.30 1.311	30	160.00 6.300	138.00 5.433	42.80 1.685	3.3.39002	PERFORMANCE Liberty/Mopar/Doug Nash
35.48 1.397	32	150.00 5.905	127.00 5.000	48.00 1.890	3.3.39004	PERFORMANCE Turbo 400 - Super T10
35.48 1.397	32	201.70 7.940	127.00 6.040	48.00 1.890	3.3.39004L	T400 Requires Counter Boring
35.48 1.397	31	160.00 6.300	138.00 5.433	42.80 1.685	3.3.39020	PERFORMANCE Ford C6



DRIVE SERVICES AUSTRALIA

Flange Yoke



Spicer Series: 0500 Suits: 19.05 x 52.00

OD (N)	Spigot (K)	PCD (D)	Hole (D1)	QTY (D1)	(D2)	(D3)	FC (L)	Part #	Type	Notes
65.00	35.00	52.00	6.00	4	37.00	37.00	40.00	05.2.6546	2	DIN Spec

Spicer Series: 1140 Suits:K5LGB80R 23.80 x 61.20

OD (N)	Spigot (K)	PCD (D)	Hole (D1)	QTY (D1)	(D2)	(D3)	FC (L)	Part #	Type	Notes
97.00	45.00	79.00	8.20	4	56.00	56.00	46.00	1.2.009	1	Suzuki
3.819	1.772	3.110	0.323		2.205	2.205	1.811			
	34.00	57.00	8.00	4	25.50	50.00		1.2.062	1	MDP JAPANESE
	1.339	2.244	0.315		1.004	1.969				
87.88	57.15	69.85	8.13	4	44.96	53.34	30.23	1.2.39	1	Std 1140 bolt pattern
3.460	2.250	2.750	0.312		1.770	2.100	1.188			

Spicer Series: 1210 Suits:5.443X 26.99 x 61.93

OD (N)	Spigot (K)	PCD (D)	Hole (D1)	QTY (D1)	(D2)	(D3)	FC (L)	Part #	Type	Notes
104.00	47.00	84.00	10.30	4	59.40	59.40	29.30	2.2.063	1	BMW
4.094	1.850	3.307	0.406		2.339	2.339	1.154			
104.00	46.00	85.00	10.00	4	60.00	60.00	46.00	2.2.072	1	Toyota Tarago
4.094	1.811	3.346	0.394		2.362	2.362	1.811			
	46.00	78.00	8.00	4	55.00	55.00	38.10	2.2.2323	1	Toyota
	1.811	3.071	0.315		2.165	2.165	1.500			
128.00	45.00	104.60	10.00	4	74.00	74.00	42.00	2.2.452.1	1	Mazda
5.039	1.772	4.118	0.394		2.913	2.913	1.654			
	45.00	89.10	10.00	4	63.00	63.00	45.90	2.2.686.1	1	Mazda
	1.772	3.508	0.394		2.480	2.480	1.807			
88.00	57.20	69.90	8.00	4	44.90	54.00	37.60	2.2.899	1	Nissan / 1140 bolt pattern
3.460	2.252	2.750	0.312		1.770	2.130	1.480			

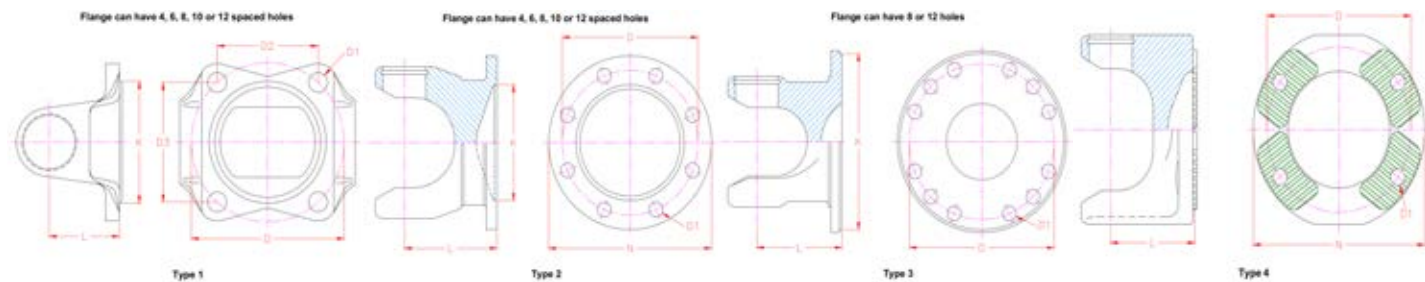
Spicer Series: 1300 Suits:K5L4R 26.99 x 74.61

OD (N)	Spigot (K)	PCD (D)	Hole (D1)	QTY (D1)	(D2)	(D3)	FC (L)	Part #	Type	Notes
120.00	40.00	96.00	12.20	4	48.00	84.00	45.00	K2.2.022	1	Ford Transit
4.724	1.575	3.780	0.480		1.889	3.310	1.771			
109.00	56.00	89.90	10.40	4	60.00	67.00	40.60	K2.2.1409	1	Ford Transit - Early
4.290	2.204	3.539	0.409		2.360	2.630	1.590			
97.00	60.30	79.40	9.53	4	51.30	60.70	35.30	K2.2.239	1	Std 1310 bolt pattern
3.818	2.375	3.125	0.375		2.020	2.390	1.390			

Spicer Series: 1310 Suits:K5.13XR 26.99 x 81.76

OD (N)	Spigot (K)	PCD (D)	Hole (D1)	QTY (D1)	(D2)	(D3)	FC (L)	Part #	Type	Notes
100.00	57.00						53.00	2.2.100000	2	100mm Blank Face Round
3.937	2.244						2.087			
100.00	57.00	84.00	8.00	6			50.00	2.2.10068	2	DIN spec. 6x Equi-spaced holes
3.937	2.244	3.307	0.315							
120.00	50.00						57.00	2.2.120000	2	Blank face - Nissan Round
4.725	1.969						2.244			

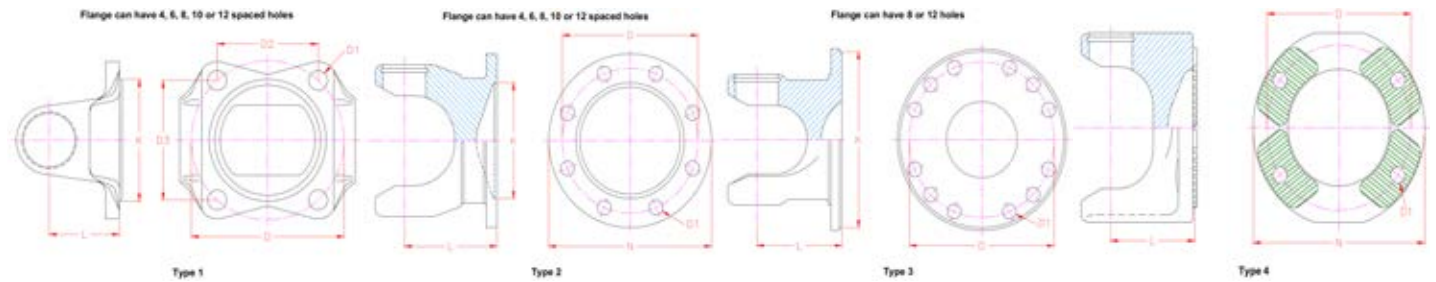
Flange Yoke



Flange Yoke

120.00	57.00	101.50	10.20	4	71.80	71.80	58.00	2.2.120410	2	Mercedes Sprinter
4.725	2.244	3.996	0.402		2.827	2.827	2.283			
125.00	50.00						54.00	2.2.12500	2	BLANK FACE
4.921	1.969						2.126			
92.07	50.80	73.20	9.50	4	47.80	56.10	38.10	2.2.349	1	Detroit - 67R
3.625	2.000	2.875	0.375		1.881	2.208	1.500			
90.00	47.00						50.00	2.2.900000	2	90mm Blank Face Round
3.543	1.850						1.969			
90.00	47.00	74.50	8.00	4	52.80	52.80	50.00	2.2.9048	2	DIN spec
3.543	1.850	2.933	0.315		2.079	2.079	1.969			
116.00	50.80	88.70	12.70	4	62.80	62.80	41.80	2.2.939	1	Ford Performance option AL3.2.949
4.566	2.000	3.500	0.500		2.472	2.472	1.650			
120.00	40.00	96.00	12.20	4	48.00	83.10	43.00	2.2.060	1	Ford Transit - Front flange (Rear Flange 2.2.061)
4.724	1.575	3.779	0.480		1.889	3.271	1.692			
120.00	56.00	96.00	12.20	4	48.00	83.20	43.00	2.2.061	1	Ford Transit - Rear flange (Front Flange 2.2.060)
4.725	2.204	3.780	0.480		1.889	3.275	1.693			
	42.00	69.00	8.00	4	35.00	60.00	50.00	2.2.062	1	Use in place of MDP
	1.650	2.875	0.312		1.377	2.360	1.970			
	65.00	95.00	12.00	4	67.00	67.00	46.00	2.2.1169	1	NISSAN MQ PATROL
	2.559	3.740	0.472		2.638	2.638	1.811			
100.00	50.00	81.00	10.00	4	57.30	57.30	44.70	2.2.1309	1	Nissan Navara / 300ZX
3.930	1.969	3.188	0.394		2.255	2.255	1.759			
100.00	50.00	81.10	10.20	4	57.30	57.30	56.00	2.2.1309A	1	Nissan
3.937	1.969	3.193	0.402		2.256	2.256	2.205			
97.00	60.30	79.40	9.50	4	51.00	60.70	35.30	2.2.329	1	Std 1310 bolt pattern
3.820	2.375	3.125	0.375		2.010	2.390	1.390			
128.00	45.00	104.60	10.00	4	74.00	74.00	52.00	2.2.452	1	Mazda
5.039	1.772	4.118	0.394		2.913	2.913	2.047			
97.00	60.30	79.40	9.50	4	51.00	60.70	41.00	2.2.459	1	1310 30° Wide Angle
2.825	2.375	3.125	0.375		2.010	2.390	1.615			
116.00	69.90	95.30	11.10	4	61.20	72.90	35.30	2.2.479	1	1350 bolt pattern
4.566	2.750	3.750	0.437		2.409	2.870	1.389			
106.00	46.00	85.00	10.20	4	56.00	64.00	41.20	2.2.799	1	Hilux (Replaces: TH.2.A1299)
4.173	1.811	3.346	0.402		2.205	2.520	1.622			
106.00	46.00	85.00	10.20	4	60.00	60.00	41.20	2.2.799.1	1	Hilux (Replaces: TH.2.040)
4.173	1.811	3.346	0.402		2.362	2.362	1.622			
115.00	46.00	93.30	11.20	4	66.00	66.00	40.00	2.2.799.4	1	Toyota
4.528	1.811	3.673	0.441		2.598	2.598	1.575			
105.00	64.90	85.00	10.00	4	50.00	69.00	42.00	2.2.8901	1	Isuzu Rodeo / Jackaroo / Ssangyong
4.133	2.555	3.346	0.394		1.975	2.710	1.653			
88.00	57.20	69.90	8.00	4	44.90	53.50	41.20	2.2.899.1	1	1140 bolt pattern
3.464	2.252	2.750	0.312		1.780	2.090	1.620			

Flange Yoke



Flange Yoke

Spicer Series: 1330 Suits:RUJ3002 26.99 x 92.08

OD (N)	Spigot (K)	PCD (D)	Hole (D1)	QTY (D1)	(D2)	(D3)	FC (L)	Part #	Type	Notes
4.469	2.000	3.500	0.484		2.472	2.472	1.625	2.2.949	1	Ford Performance Option AL3.2.949

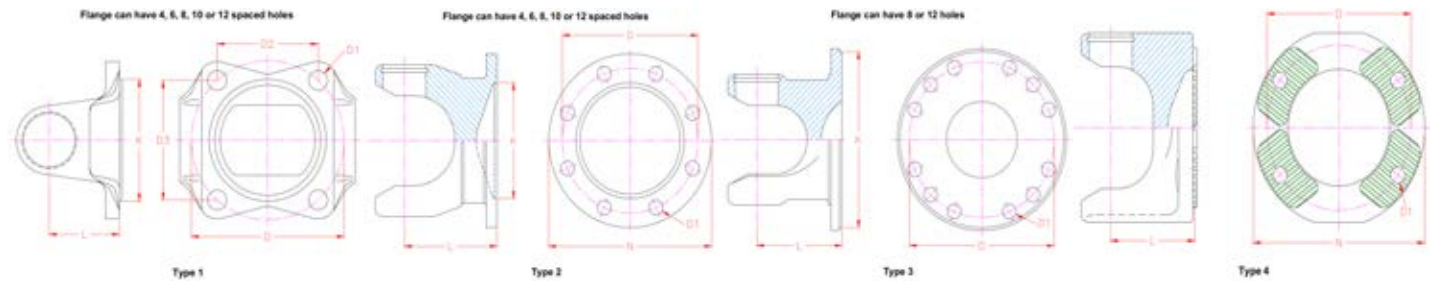
Spicer Series: 1350 Suits:5.178X 30.16 x 92.08

OD (N)	Spigot (K)	PCD (D)	Hole (D1)	QTY (D1)	(D2)	(D3)	FC (L)	Part #	Type	Notes
100.00	57.00						55.00	3.2.10000.1350	2	Blank Face Round
3.937	2.244						2.165			
100.00	57.00	84.00	8.00	6			55.00	3.2.10068.1350	2	DIN FACE
3.937	2.244	3.307	0.315				2.165			
120.00	75.00						56.00	3.2.120000.1350	2	Blank Face Round
4.725	2.953						2.205			
120.00	57.00	101.50	10.20	4	71.80	71.80	66.00	3.2.120410	1	Mercedes Sprinter
4.725	2.244	3.996	0.402		2.827	2.827	2.598			
130.00	50.80	107.95	12.70	4	76.20	76.20	45.00	3.2.1579A	1	Ford Transit
5.120	2.000	4.250	0.500		3.000	3.000	1.771			
130.00	68.00	107.90	12.00	4	76.20	76.20	41.00	3.2.1699	1	Ford F Series M12 Threaded Holes
5.118	2.675	4.250	0.440		3.000	3.000	1.614			
5.250	2.560	4.250	0.500				1.618	3.2.1879	1	Ford Ranger PX II
116.00	69.90	95.25	11.20	4	61.20	72.90	39.60	3.2.119	1	Std 1350 bolt pattern
4.560	2.750	3.750	0.440		2.410	2.870	2.560			
138.00		110.00	12.50	3			75.00	AL3.2.RC110		Ford / GM Billet 6061 T6 Aluminium Replaces RC.JUR.006
5.433		4.331	0.492				2.953			
146.00	75.00	120.60	12.70		85.00	85.00	44.50	AL3.2.1859	1	Mustang 2011-2015 Trans Output. Camaro Diff 2010-. Forged 6061-T6 Aluminium.
5.750	2.953	4.750	0.500		3.346	3.346	1.750			
	50.80	88.90	13.10	4	62.80	62.80	39.50	AL3.2.949		Mustang Falcon 6061-T6 Aluminium
108.00	108.00	94.00	10.80				87.50	AL3.2.10894		Replaces 108mm CV 7075-T6 Aluminium

Spicer Series: 1410 Suits:K5GB10R 30.16 x 106.35

OD (N)	Spigot (K)	PCD (D)	Hole (D1)	QTY (D1)	(D2)	(D3)	FC (L)	Part #	Type	Notes
100.00	57.00	84.00	8.00	6			65.00	3.2.10068	2	100mm OD, DIN spec.
3.937	2.244	3.307	0.315				2.560			
120.00	75.00						55.60	3.2.120000.1410	2	120mm OD, Blank face-Round
4.724	2.953						2.189			
120.00	75.00	101.50	10.00	8			55.60	3.2.120810.1410	2	120mm OD, DIN spec.
4.725	2.953	3.996	0.394				2.189			
150.00	90.00						71.80	3.2.150000.1410	2	Blank Face Round
5.906	3.543						2.827			
100.00	57.00						55.00	3.2.10000.1410	2	Blank Face Round Male Spigot
3.937	2.244						2.165			

Flange Yoke



116.00	69.90	95.25	11.20	4	61.20	72.90	42.90	3.2.159	1	Std 1410 bolt pattern
4.566	2.752	3.750	0.441		2.410	2.870	1.690			
140.00	70.00	115.00	11.80	4	78.40	84.10	42.00	3.2.3100	1	Hino
5.512	2.756	4.528	0.465		3.087	3.311	1.654			
120.00	70.00	100.00	12.00	4	64.30	76.60	55.00	3.2.352.1410	1	Mitsubishi
4.725	2.756	3.937	0.472		2.531	3.016	2.165			
120.00	80.00	100.00	10.20	4	59.00	81.10	57.00	3.2.3900	1	Isuzu
4.724	3.150	3.937	0.402		2.325	3.188	2.244			
146.00	95.30	120.70	12.70	4	77.50	92.40	50.80	3.2.429	1	1480 bolt pattern (30°)
5.748	3.752	4.750	0.500		3.050	3.637	2.000			

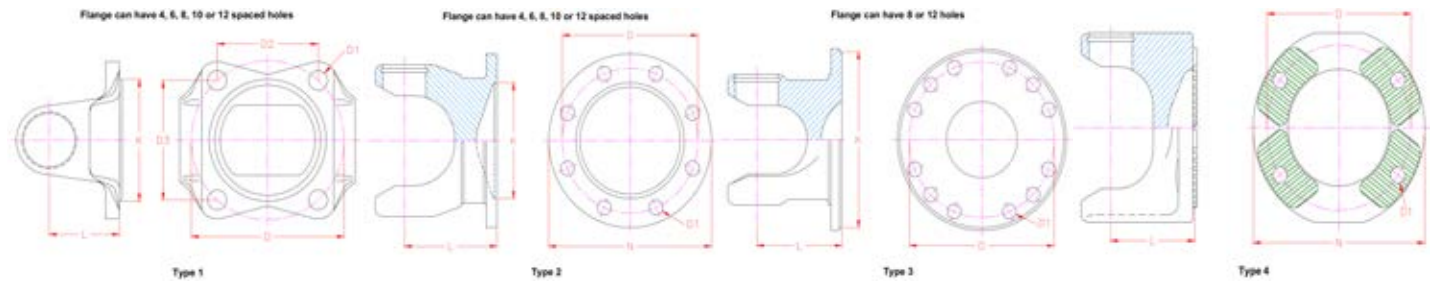
Spicer Series: 1480 Suits:5.188X 34.93 x 106.38

OD (N)	Spigot (K)	PCD (D)	Hole (D1)	QTY (D1)	(D2)	(D3)	FC (L)	Part #	Type	Notes
120.00	75.00						72.00	3.2.120000.1480	2	Blank Face Round
4.725	2.953						2.835			
120.00	75.00						60.00	3.2.120000.1480	2	Blank
4.724	2.953						2.362			
120.00	75.00	101.50	10.00	8			60.00	3.2.120810.1480	2	DIN spec.
4.725	2.953	3.996	0.394				2.362			
150.00	90.00						73.00	3.2.150000.1480	2	Blank Face Round
5.910	3.543						2.875			
150.00	90.00	130.00	12.00	8			73.00	3.2.150812	2	DIN FACE
5.906	3.543	5.118	0.472				2.874			
120.00		100.00	11.20	4	57.30	81.10	63.50	687.30.2.120411	4	Cross Tooth KV type
4.724		3.937	0.441		2.256	3.193	2.500			
135.00	80.00	109.10	12.00	4	55.00	95.20	69.00	3.2.013	1	Isuzu
5.315	3.150	4.295	0.472		2.165	3.748	2.717			
120.00	80.00	100.00	12.20	4	58.80	80.90	65.00	3.2.014	1	Isuzu
4.725	3.150	3.937	0.480		2.315	3.185	2.559			
116.00	69.85	95.25	11.20	4	61.20	72.90	60.50	3.2.104	1	Std 1410 Bolt Pattern
4.566	2.750	3.750	0.438		2.410	2.870	2.381			
120.00	70.00	100.00	12.20	4	64.30	76.60	65.00	3.2.352.1480	1	Mitsubishi
4.724	2.756	3.937	0.480		2.531	3.016	2.559			
146.00	95.25	120.65	12.70	4	77.60	92.40	50.80	3.2.479	1	Std 1480 bolt pattern
5.750	3.750	4.750	0.500		3.060	3.640	2.000			
174.60	168.30	155.60	9.80	8			50.00	3.2.499	3	1480 JOINT TO 1610 FACE
6.874	6.626	6.126	0.386				1.969			

Spicer Series: 1550 Suits:5.155X 34.93 x 126.20

OD (N)	Spigot (K)	PCD (D)	Hole (D1)	QTY (D1)	(D2)	(D3)	FC (L)	Part #	Type	Notes
120.00	75.00	101.50	10.00	8			95.00	4.2.120810	2	DIN FACE
4.724	2.953	3.996	0.394				3.740			
150.00	90.00	130.00	12.00	8			80.00	4.2.150812	2	DIN spec.
5.906	3.543	5.118	0.472				3.150			

Flange Yoke



Flange Yoke

146.00	95.25	120.65	12.70	4	77.50	92.40	50.80	4.2.669	1	Std 1550 bolt pattern
5.750	3.750	4.750	0.500		3.060	3.640	2.000			
146.00	95.25	120.65	12.70	4	77.50	92.40	38.10	4.2.679	1	Close couple (8°)
5.750	3.750	4.750	0.500		3.050	3.640	1.500			
175.00	168.30	155.60	9.50	8	0.00	0.00	50.80	4.2.689	3	1610 bolt pattern
6.890	6.626	6.126	0.374		0.000	0.000	2.000			
145.00	80.00	125.00	13.20	4	80.30	95.80	60.00	4.2.847	1	Hino - Special Order Only
5.709	3.150	4.921	0.520		3.161	3.772	2.362			

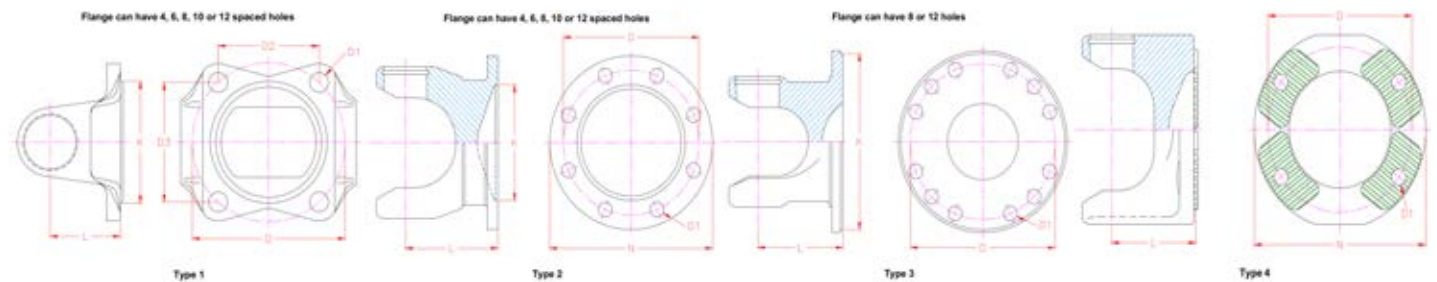
Spicer Series: 1510 Suits:K5GB22R 39.70 x 115.90

OD (N)	Spigot (K)	PCD (D)	Hole (D1)	QTY (D1)	(D2)	(D3)	FC (L)	Part #	Type	Notes
120.00	75.00	101.60	10.00	8			72.90	K4.2.120810	2	DIN Spec
4.725	2.953	4.000	0.394				2.870			
130.00	82.50	112.00	10.00	8			67.00	K4.2.130810	2	Mercedes
5.118	3.248	4.409	0.394				2.638			
150.00	90.00						72.00	K4.2.150000	2	Blank Face Round
5.906	3.531						2.835			
150.00	90.00	130.00	12.10	8			90.00	K4.2.150812	2	DIN 150
5.906	3.543	5.118	0.475				3.543			
168.30	155.60		9.50	4	77.60	92.40	69.85	4.2.309	1	1500 Series
6.625	6.125		0.374		3.055	3.640	2.750			
146.00	95.25	120.65	12.70	4	77.60	92.40	40.00	K4.2.001	1	Short Coupled
5.750	3.750	4.750	0.500		3.060	3.640	1.575			
175.00	168.28	155.58	9.52	8			92.10	K4.2.1610	3	1610 Face
6.889	6.625	6.125	0.375				3.625			
146.00	95.25	120.65	12.70	4	77.60	92.40	63.50	K4.2.GB239	1	Standard
5.750	3.750	4.750	0.500		3.060	3.640	2.500			

Spicer Series: 1610 Suits:5.279X 47.63 x 134.94

OD (N)	Spigot (K)	PCD (D)	Hole (D1)	QTY (D1)	(D2)	(D3)	FC (L)	Part #	Type	Notes
150.00	90.00	130.00	12.10	8			85.00	5.2.150812	2	DIN spec
5.906	3.543	5.118	0.476				3.346			
203.00	80.00						97.00	5.2.203000		1610 Blank
171.00	90.00	140.00	14.00	4	75.20	118.10	70.00	5.2.244	1	Isuzu
6.732	3.543	5.512	0.551		2.961	4.650	2.756			
175.00	168.28	155.58	9.52	8			69.85	5.2.279	3	Std 1610 bolt pattern
6.889	6.625	6.125	0.375				2.750			
175.00	168.28	155.58	9.52	8			47.63	5.2.379	3	Close couple, 1610 bolt pattern
6.889	6.625	6.125	0.375				1.875			
203.20	196.90	184.15	9.52	8			69.85	5.2.629	3	1710 bolt pattern
8.000	7.752	7.250	0.375				2.750			

Flange Yoke



Spicer Series: 1710 Suits:5.280X 49.21 x 154.78

OD (N)	Spigot (K)	PCD (D)	Hole (D1)	QTY (D1)	(D2)	(D3)	FC (L)	Part #	Type	Notes
150.00	90.00	130.00	12.00	8			93.00	6.2.150812	2	DIN FACE
5.906	3.543	5.118	0.472				3.661			
165.00	95.00	140.00	16.20	8			100.00	6.2.165816	2	DIN spec
6.496	3.740	5.512	0.638				3.937			
180.00	110.00						90.00	6.2.1800000	2	Blank Face Round
7.087	4.331						3.543			
180.00	110.00	155.60	16.20	10			100.00	6.2.1801016	2	DIN spec
7.087	4.331	6.126	0.638				3.937			
180.00	110.00	155.50	12.00	8				6.2.180812		DIN180
180.00	110.00	155.51	14.20	8			85.00	6.2.180814	2	DIN spec
7.087	4.331	6.122	0.559				3.346			
180.00	110.00	155.60	14.20	8			100.00	6.2.180814.1	2	.312" (5/16") BSF Bolts included
7.087	4.331	6.126	0.559				3.937			
203.00	100.00						96.00	6.2.203000	2	BLANK FACE - SUITABLE FOR ISUZU, MITSUBISHI & HINO
7.992	3.937						3.780			
150.00		130.00	13.20	4	86.00	122.90	81.00	6.2.15	4	KV Cross tooth
5.906		5.118	0.520		3.386	4.839	3.189			
192.00	90.00	156.00	16.20	4	134.00	80.00	96.00	6.2.192416	1	MITSUBISHI FACE USE 6.2.203000
7.559	3.543	6.142	0.638		5.276	3.150	3.780			
197.00	100.00	160.00	16.20	4	131.10	91.80	96.00	6.2.197416.1	1	ISUZU FACE USE 6.2.203000
7.756	3.937	6.299	0.638		5.161	3.614	3.780			
203.20	120.00	180.00	13.20	6				6.2.203613	3	Mitsubishi
8.000	4.725	7.087	0.520							
203.20	196.85	184.15	9.52	8			76.20	6.2.749	3	Std 1710 bolt pattern
8.000	7.750	7.250	0.375				3.000			
203.20	196.85	184.15	9.52	8			50.80	6.2.769	3	Close couple 1710 bolt pattern
8.000	7.750	7.250	0.375				2.000			
175.00	168.28	155.58	9.52	8			98.00	K56.2.GB99	3	1610 bolt pattern
6.889	6.625	6.125	0.375				3.858			

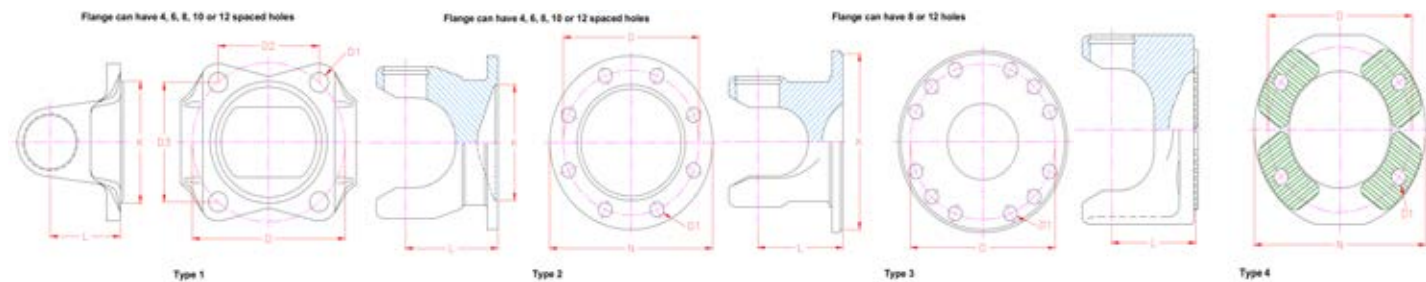
Spicer Series: 1760 Suits:5.407X 49.21 x 177.80

OD (N)	Spigot (K)	PCD (D)	Hole (D1)	QTY (D1)	(D2)	(D3)	FC (L)	Part #	Type	Notes
203.20	196.85	184.15	11.11	12			85.73	6.3.2.19	3	STD 1810 bolt pattern
8.000	7.750	7.250	0.438				3.375			

Spicer Series: 1810 Suits:5.281X 49.21 x 191.69

OD (N)	Spigot (K)	PCD (D)	Hole (D1)	QTY (D1)	(D2)	(D3)	FC (L)	Part #	Type	Notes
180.00	110.00	155.58	16.00	10			100.00	6.5.2.1801016	2	DIN Spec.
7.087	4.331	6.125	0.630				3.937			
180.00	110.00	155.00	14.20	8			92.00	6.5.2.180814	2	DIN Spec
7.087	4.331	6.120	0.559				3.622			

Flange Yoke



Flange Yoke

240.00 160.00 90.00
9.449 6.299 3.543 **6.5.2.2400000** 2 Blank Face Round

180.00 150.00 15.20 4 86.00 122.90 88.00
7.087 5.906 0.598 3.386 4.839 3.465 **6.5.2.15** 4 KV Cross tooth

203.20 196.85 184.15 11.11 12 85.73
8.000 7.750 7.250 0.438 3.375 **6.5.2.329** 3 Std 1810 bolt pattern

Spicer Series: 1880 Suits:5.308X 55.55 x 205.59

OD (N)	Spigot (K)	PCD (D)	Hole (D1)	QTY (D1)	(D2)	(D3)	FC (L)	Part #	Type	Notes
241.30	177.80	209.55	15.87	8			91.44	8.2.109	3	STD 1880 bolt pattern
9.500	7.000	8.250	0.625				3.600			
241.30	177.80	209.55	15.87	8			63.50	8.2.119	3	Close couple, 1880 bolt pattern
9.500	7.000	8.250	0.625				2.500			

SPL Series: SPL170 Suits:SPL170X 55.00 x 164.00

OD (N)	Spigot (K)	PCD (D)	Hole (D1)	QTY (D1)	(D2)	(D3)	FC (L)	Part #	Type	Notes
203.20	196.85	184.15	11.11	12			81.50	170.2.19	3	SPL170 with 1810 face
8.000	7.750	7.250	0.438				3.209			

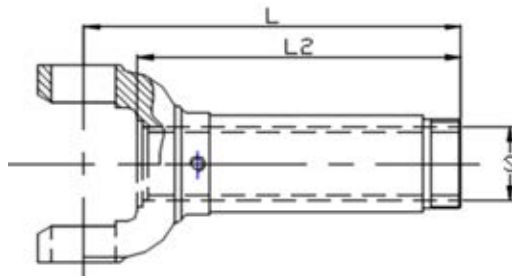
SPL Series: SPL250 Suits:SPL250X 60.00 x 163.00

OD (N)	Spigot (K)	PCD (D)	Hole (D1)	QTY (D1)	(D2)	(D3)	FC (L)	Part #	Type	Notes
180.00		150.00	14.20	4	86.00	122.90	91.00	250.2.15	4	SPL250 180KV FACE
7.087		5.906	0.551		3.386	4.839	3.583			
203.20	196.80	184.20	11.20	12			89.50	250.2.19	3	1810 FACE
8.000	7.748	7.252	0.441				3.524			



SERVICES AUSTRALIA

Slip Yoke



Slip Yoke

Spicer Series: 1140 Suits:K5LGB80R 23.80 x 61.20

Spline (S)	Qty (S)	Length (L)	Length (L1)	Angle (F)	Part #	Application
26.92	16	110.00	88.10	17	K1.3.A360	K1.42.GB1901 & K1.42.GB1921
1.060		4.330	3.475			

Spicer Series: 1210 Suits:5.443X 26.99 x 61.93

Spline (S)	Qty (S)	Length (L)	Length (L1)	Angle (F)	Part #	Application
31.75	16	162.50	129.00	20	2.3.8861KX	2.40.1741
1.250		6.400	5.070			
31.75	16	203.20	170.00	20	2.3.8961KX	2.40.2301
1.250		8.000	6.690			

Spicer Series: 1300 Suits:K5L4R 26.99 x 74.61

Spline (S)	Qty (S)	Length (L)	Length (L1)	Angle (F)	Part #	Application
34.93	16	139.70	110.00	20	K2.3.A610	Can use 687.15 Assembly 2.40.1031 / 2.40.2701 / 2.40.1041
1.375		5.500	4.330			

Spicer Series: 1310 Suits:K5.13XR 26.99 x 81.76

Spline (S)	Qty (S)	Length (L)	Length (L1)	Angle (F)	Part #	Application
31.75	16	166.60	129.00	30	2.3.4441KX	2.40.1771
1.250		6.575	5.070			
34.93	16	136.70	109.00	20	2.3.128KX	2.40.1031 / 2.40.2701 / 2.40.1041
1.375		5.375	4.291			
34.93	16	104.10	79.00	20	2.3.348KX	2.82.21
1.375		4.090	3.110			
34.93	16	166.00	136.00	30	2.3.3658KX	2.40.3061
1.375		6.535	5.355			
34.93	16	208.00			2.3.3738KX	CAN USE 2.3.5821KX
1.375		8.188				
34.93	16	174.80	135.00	30	2.3.5221KX	2.40.2451 / 2.40.1221 / 2.40.1711
1.375		6.875	5.314			
34.93	16	200.20	160.00	30	2.3.5821KX	2.40.3081 / 2.40.1851 / 2.40.2051
1.375		7.875	6.299			
38.10	16	166.00		20	2.3.3668KX	2.82.002
1.500		6.535				

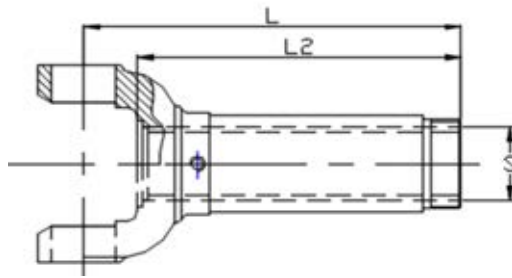
Spicer Series: 1330 Suits:RUJ3002 26.99 x 92.08

Spline (S)	Qty (S)	Length (L)	Length (L1)	Angle (F)	Part #	Application
34.93	16	190.00	162.00	17	2.3.7481KX	2.40.1851 / 2.40.3081 / 2.40.2051
1.375		7.480	6.375			
34.93	16	153.00	126.00	25	2.3.7961KX	2.40.1221 / 2.40.1711 / 2.40.2451
1.375		6.025	4.960			

Spicer Series: 1350 Suits:5.178X 30.16 x 92.08

Spline (S)	Qty (S)	Length (L)	Length (L1)	Angle (F)	Part #	Application
34.93	16	147.60	115.00	20	3.3.1501KX	
1.375		5.811	4.525			

Slip Yoke



Slip Yoke

38.10 1.500	16	185.70 7.311	160.00 6.299	20	3.3.488KX	3.40.1611 / 3.40.3891 / 3.40.1491
38.10 1.500	16	147.60 5.811	115.00 4.525	20	3.3.598KX	3.40.1101 / 3.40.1471 / 3.40.3901

Spicer Series: 1350 Performance Suits:5.627X 30.16 x 92.08

Spline (S)	Qty (S)	Length (L)	Length (L1)	Angle (F)	Part #	Application
32.61 1.284	30	163.70 6.445	126.00 4.961		3.3.3738	Nissan / VL Turbo

Spicer Series: 1410 Suits:K5GB10R 30.16 x 106.35

Spline (S)	Qty (S)	Length (L)	Length (L1)	Angle (F)	Part #	Application
34.93 1.375	16	133.50 5.250	103.00 4.055	20	3.3.788KX	2.40.1041
38.10 1.500	16	165.20 6.500	135.00 5.312	20	3.3.118KX	3.40.1101 / 3.40.3901
38.10 1.500	16	133.40 5.250	103.00 4.050	20	3.3.2041KX	3.53.1031
38.10 1.500	16	99.10 3.900	72.00 2.830	20	3.3.468KX	3.82.81
38.10 1.500	16	198.40 7.811	165.10 6.500	28	3.3.508KX	3.40.1611 / 3.40.3891 / 3.40.1491
39.62 1.560	16	173.00 6.811	139.00 5.472	21	3.3.1701KX	

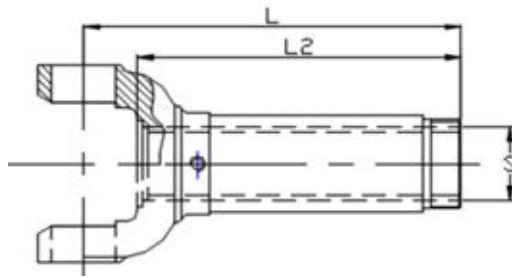
Spicer Series: 1480 Suits:5.188X 34.93 x 106.38

Spline (S)	Qty (S)	Length (L)	Length (L1)	Angle (F)	Part #	Application
39.60 1.560	16	173.00 6.811	136.00 5.353	21	3.3.1601KX	3.40.1571
39.60 1.560	16	241.30 9.500	191.00 7.500	35	3.3.1641KX	3.40.1391
39.60 1.560	16	292.10 11.500	241.30 9.500	35	3.3.1661KX	3.40.1411
44.45 1.750	16	173.00 6.811	141.00 5.550	22	3.3.1505KX	4.40.761 / 3.82.1505

Spicer Series: 1550 Suits:5.155X 34.93 x 126.20

Spline (S)	Qty (S)	Length (L)	Length (L1)	Angle (F)	Part #	Application
44.45 1.750	16	174.80 6.882	139.00 5.472	22	4.3.1241KX	4.40.761
44.45 1.750	16	254.00 10.000	203.20 8.000	35	4.3.1431KX	4.40.721
63.50 2.500	16	88.90 3.500	65.00 2.560	8	4.3.1261KX	Close couple suit 4.82.191

Slip Yoke



Slip Yoke

Spicer Series: 1510 Suits:K5GB22R 39.70 x 115.90

Spline (S)	Qty (S)	Length (L)	Length (L1)	Angle (F)	Part #	Application
44.45	16	168.30	135.00		K4.3.A1120	4.40.761
1.750		6.625	5.312			

Spicer Series: 1650 Suits:5.165X 41.28 x 142.00

Spline (S)	Qty (S)	Length (L)	Length (L1)	Angle (F)	Part #	Application
50.80	16	241.30			5.3.1681KX	
2.000		9.500				

Spicer Series: 1610 Suits:5.279X 47.63 x 134.94

Spline (S)	Qty (S)	Length (L)	Length (L1)	Angle (F)	Part #	Application
50.80	16	198.40	160.00	22	5.3.108KX	5.82.661 / 5.82.921
2.000		7.811	6.300			
50.80	16	303.30	230.00	45	5.3.2141KX	5.40.1041 / 5.82.751.2 / 5.82.751.6
2.000		11.940	9.060			
50.80	16	276.30	209.60	35	5.3.2261KX	5.40.1011
2.000		10.875	8.250			
50.80	16	236.50	158.75	30	5.3.288KX	7C.40.703
2.000		9.312	6.250			

Spicer Series: 1710 Suits:5.280X 49.21 x 154.78

Spline (S)	Qty (S)	Length (L)	Length (L1)	Angle (F)	Part #	Application
63.50	16	323.20	239.00	45	6.3.2551KX	
2.500		12.725	9.400			
63.50	16	297.00	238.00	30	6.3.2651KX	6.40.521
2.500		11.690	9.375			
63.50	16	243.60	197.60	22	6.3.2671KX	6.40.541
2.500		9.600	7.750			

Spicer Series: 1760 Suits:5.407X 49.21 x 177.80

Spline (S)	Qty (S)	Length (L)	Length (L1)	Angle (F)	Part #	Application
63.50	16	283.50	234.00	30	6.3.3.21KX	6.40.521
2.500		11.161	9.212			

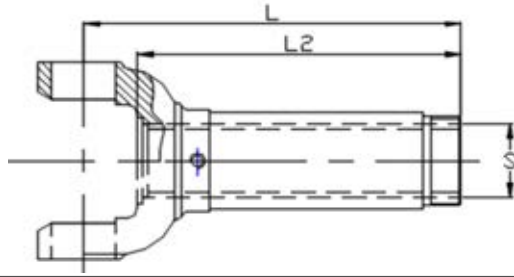
Spicer Series: 1810 Suits:5.281X 49.21 x 191.69

Spline (S)	Qty (S)	Length (L)	Length (L1)	Angle (F)	Part #	Application
76.20	16	260.40	197.00	30	6.5.3.1351KX	6.5.40.201
3.000		10.250	7.750			
76.20	16	301.80	240.00	30	6.5.3.1371KX	6.5.40.191
3.000		11.875	9.450			
82.55	18	136.70	99.00	12	6.5.3.1451KX	Close couple
3.250		5.375	3.875			

Spicer Series: 1880 Suits:5.308X 55.55 x 205.59

Spline (S)	Qty (S)	Length (L)	Length (L1)	Angle (F)	Part #	Application
76.20	16	296.20	233.40	22	8.3.411KX	8.40.101
3.000		11.625	9.188			

Slip Yoke



Slip Yoke

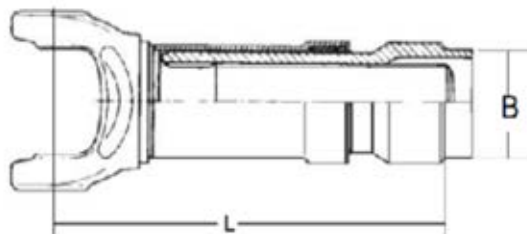
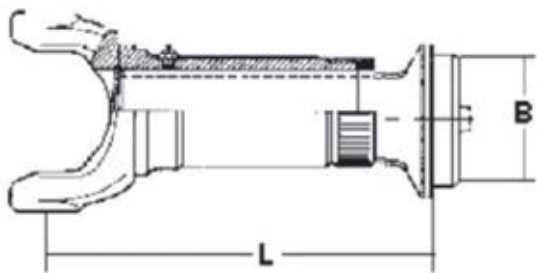
RPL **Series: RPL20 Suits:CP20RPLS 52.35 x 174.75**

Spline (S)	Qty (S)	Length (L)	Length (L1)	Angle (F)	Part #	Application
2.500	16	12.050		44	20RP.3.001KX	Use with 20RP.82.1345/1520



DRIVELINE
SERVICES AUSTRALIA

Yoke Shaft & Barrel / Slip & Stub Assembly



Yoke Shaft & Barrel / Slip &

Spicer Series: 1140 Suits:K5LGB80R 23.80 x 61.20

Tube (OD)	Tube (T)	Butt (B)	Spline (S)	Qty (S)	Length (L)	Total Slip	Type	Part #	Notes
50.80	1.65	47.70	26.92	16	125.00	72.89	1.00	K1.6.1901	K1.3.A360 & K1.42.GB1901
2.000	0.065	1.878	1.060			2.870			

Spicer Series: 1310 Suits:K5.13XR 26.99 x 81.76

Tube (OD)	Tube (T)	Butt (B)	Spline (S)	Qty (S)	Length (L)	Total Slip	Type	Part #	Notes
50.80	2.10	46.80	34.93	16	198.12	72.90	1.00	2.6.2451	2.3.5221KX & 2.40.2451
2.000	0.083	1.842	1.375		7.800	2.870			
50.80	2.41	46.18	34.93	16	159.51	50.80	1.00	2.6.2701	2.3.128KX & 2.40.2701
2.000	0.095	1.818	1.375		6.280	2.000			
50.80	2.41	46.18	34.93	16	233.93	99.82	1.00	2.6.3081	2.3.5821KX & 2.40.3081
2.000	0.095	1.818	1.375		9.210	3.930			
63.50	2.10	59.50	34.93	16	203.20	72.89	1.00	2.6.1711	2.3.5221KX & 2.40.1711
2.500	0.083	2.342	1.375		8.000	2.870			
63.50	2.10	59.50	34.93	16	231.90	99.82	1.00	2.6.1851	2.3.5821KX & 2.40.1851
2.500	0.083	2.342	1.375		9.130	3.930			
63.50	2.41	58.88	38.10	18	221.48	88.90	2.00	2.6.1310	European Type
2.500	0.095	2.318	1.500		8.720	3.500			
63.50	2.41	58.88	34.93	16	163.06	50.80	1.00	2.6.2891	2.3.128KX & 2.40.2891
2.500	0.095	2.318	1.375		6.420	2.000			
76.20	1.65	73.10	34.93	16	204.98	72.90	1.00	2.6.1221	2.3.5221KX & 2.40.1221
3.000	0.065	2.878	1.375		8.070	2.870			

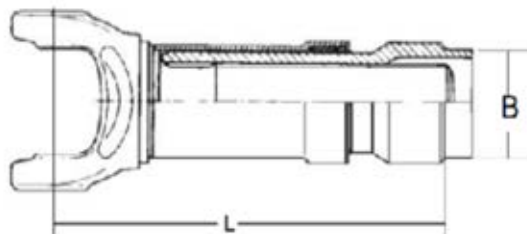
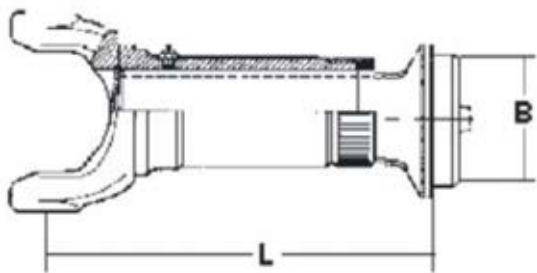
Spicer Series: 1350 Suits:5.178X 30.16 x 92.08

Tube (OD)	Tube (T)	Butt (B)	Spline (S)	Qty (S)	Length (L)	Total Slip	Type	Part #	Notes
76.20	2.10	72.20	38.10	16	181.86	50.80	1.00	3.6.3502	3.3.598KX & 3.40.1101
3.000	0.083	2.842	1.500		7.160	2.000			
76.20	2.10	72.20	38.10	16	214.88	88.90	1.00	3.6.3503	3.3.488KX & 3.40.1611
3.000	0.083	2.842	1.500		8.460	3.500			
76.20	2.41	71.58	38.10	16	214.88	88.90	1.00	3.6.3501	3.3.488KX & 3.40.3891
3.000	0.095	2.818	1.500		8.460	3.500			
76.20	2.41	71.58	38.10	16	185.92	50.80	1.00	3.6.3504	3.3.598KX & 3.40.3901
3.000	0.095	2.818	1.500		7.320	2.000			

Spicer Series: 1410 Suits:K5GB10R 30.16 x 106.35

Tube (OD)	Tube (T)	Butt (B)	Spline (S)	Qty (S)	Length (L)	Total Slip	Type	Part #	Notes
					229.00	82.00		3.6.1403	
3.000	0.095	2.818							
					188.00	70.00		3.6.1410.1	
3.000	0.095	2.818							
76.20	2.10	72.20	38.10	16	192.78	54.86	1.00	3.6.4102	3.3.118KX & 3.40.1101
3.000	0.083	2.842	1.500		7.590	2.160			
76.20	2.10	72.20	38.10	16	220.98	88.90	1.00	3.6.4104	3.3.508KX & 3.40.1611
3.000	0.083	2.842	1.500		8.700	3.500			

Yoke Shaft & Barrel / Slip & Stub Assembly



Yoke Shaft & Barrel / Slip &

76.20	2.41	71.58	38.10	16	189.99	64.77	1.00	3.6.4101	3.3.118KX & 3.40.3901
3.000	0.095	2.818	1.500		7.480	2.550			
76.20	2.41	71.58	38.10	16	220.98	88.90	1.00	3.6.4103	3.3.508KX & 3.40.3891
3.000	0.095	2.818	1.500		8.700	3.500			
88.90	2.41	84.28	50.03	18	208.00	101.60	2.00	3.6.1410	Euro Style - Can machine to suit 3" Tube
3.500	0.095	3.318	1.970		8.189	4.000			

Spicer Series: 1480 Suits:5.188X 34.93 x 106.38

Tube (OD)	Tube (T)	Butt (B)	Spline (S)	Qty (S)	Length (L)	Total Slip	Type	Part #	Notes
88.90	2.41	84.28	44.95	16	216.91	101.60	2.00	687.30.6	Euro Style
3.500	0.095	3.318	1.770		8.540	4.000			
88.90	2.41	84.28	50.03	18	254.76	101.60	2.00	687.30.6.1	Euro Style - Can machine to suit 3" tube
3.500	0.095	3.318	1.970		10.030	4.000			

Spicer Series: 1550 Suits:5.155X 34.93 x 126.20

Tube (OD)	Tube (T)	Butt (B)	Spline (S)	Qty (S)	Length (L)	Total Slip	Type	Part #	Notes
			44.45	16	292.00			4.6.001	
3.000	0.095	2.818	1.750						
88.90	2.41	84.28	44.45	16	200.02	59.94	2.00	4.6.1550	Euro Style
3.500	0.095	3.318	1.750		7.875	2.360			

Spicer Series: 1510 Suits:K5GB22R 39.70 x 115.90

Tube (OD)	Tube (T)	Butt (B)	Spline (S)	Qty (S)	Length (L)	Total Slip	Type	Part #	Notes
84.32	2.41	79.70	54.86	20	294.89		2.00	K4.6.001	Euro Style
3.320	0.095	3.138	2.160		11.610				
88.90	3.40	82.30	50.80	16	294.89		1.00	K4.6.002	Steel Spline
3.500	0.134	3.240	2.000		11.610				

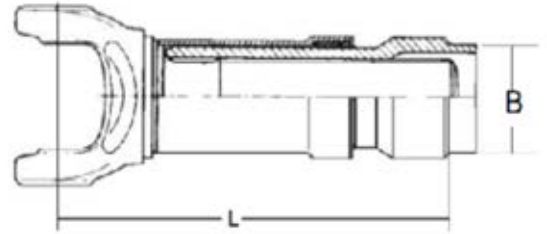
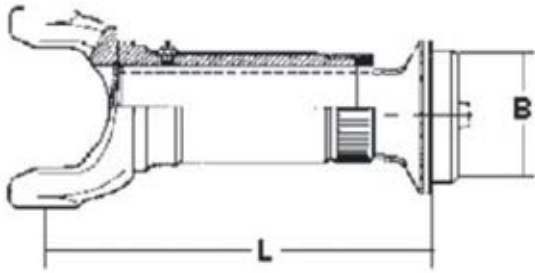
Spicer Series: 1610 Suits:5.279X 47.63 x 134.94

Tube (OD)	Tube (T)	Butt (B)	Spline (S)	Qty (S)	Length (L)	Total Slip	Type	Part #	Notes
88.90	3.40	82.30	50.80	16	306.83	119.88	1.00	5.6.001	5.3.2261KX & 5.40.1011
3.500	0.134	3.240	2.000		12.080	4.720			
88.90	3.40	82.30	50.80	16	282.95	99.82	1.00	5.6.002	5.3.288KX & 7C.40.703
3.500	0.134	3.240	2.000		11.140	3.930			

Spicer Series: 1710 Suits:5.280X 49.21 x 154.78

Tube (OD)	Tube (T)	Butt (B)	Spline (S)	Qty (S)	Length (L)	Total Slip	Type	Part #	Notes
103.88	4.57	94.94	63.50	16	329.94	133.35	1.00	6.6.001	6.3.2651KX & 6.40.521
4.090	0.180	3.738	2.500		12.990	5.250			
103.88	4.57	94.94	63.50	16	279.40	134.62	1.00	6.6.001S	Steel Splines Limited Stock Available
4.090	0.180	3.738	2.500		11.000	5.300			
103.88	4.57	94.94	63.50	16	355.60	133.35	1.00	6.6.002	6.3.2551KX & 6.40.521
4.090	0.180	3.738	2.500		14.000	5.250			
103.88	4.57	94.94	63.50	16	279.90	98.55	1.00	6.6.003	6.3.2671KX & 6.40.541
4.090	0.180	3.738	2.500		11.020	3.880			

Yoke Shaft & Barrel / Slip & Stub Assembly



Yoke Shaft & Barrel / Slip &

Spicer Series: 1810 Suits:5.281X 49.21 x 191.69

Tube (OD)	Tube (T)	Butt (B)	Spline (S)	Qty (S)	Length (L)	Total Slip	Type	Part #	Notes
116.58	4.57	107.64	76.20	16	345.94	127.00	1.00	6.5.6.001	6.5.3.1351KX & 6.5.40.191
4.590	0.180	4.238	3.000		13.620	5.000			
116.58	4.57	107.64	76.20	16	345.94	85.72	1.00	6.5.6.002	6.5.3.1351KX & 6.5.40.201
4.590	0.180	4.238	3.000		13.620	3.375			

Spicer Series: 1800 Suits:5.124X 59.10 x 167.49

Tube (OD)	Tube (T)	Butt (B)	Spline (S)	Qty (S)	Length (L)	Total Slip	Type	Part #	Notes
88.90	4.77	79.56	76.20	10	356.87	82.55	1.00	6.5.6.1800	
3.500	0.188	3.132	3.000		14.050	3.250			

SPL Series: SPL140 Suits:SPL140X 49.20 x 138.71

Tube (OD)	Tube (T)	Butt (B)	Spline (S)	Qty (S)	Length (L)	Total Slip	Type	Part #	Notes
110.00	5.00	100.20			278.00		2.00	140.6.001	
					10.945				

SPL Series: SPL170 Suits:SPL170X 55.00 x 164.00

Tube (OD)	Tube (T)	Butt (B)	Spline (S)	Qty (S)	Length (L)	Total Slip	Type	Part #	Notes
			88.01	34	298.45	194.99	2.00	170.6.002	Interaxle Application Less Boot 170.211987X Female Butt
			3.465		11.750	7.677			
120.00	6.00	108.20	88.01	34	310.00	194.99	2.00	170.6.001	
4.724	0.236	4.260	3.465		12.205	7.677			

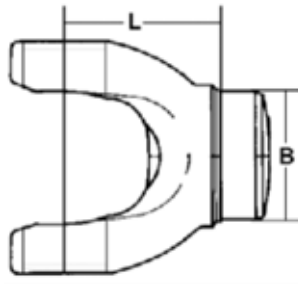
SPL Series: SPL250 Suits:SPL250X 60.00 x 163.00

Tube (OD)	Tube (T)	Butt (B)	Spline (S)	Qty (S)	Length (L)	Total Slip	Type	Part #	Notes
132.00	6.00	120.20	97.99	38	276.00	109.98	2.00	250.6.001	
5.197	0.236	4.733	3.858		10.866	4.330			
132.00	6.00	120.20	97.99	38	280.00	75.00	2.00	250.6.003X	USE WITH 250.211959X BOOT KIT

RPL Series: RPL25 Suits:CP25RPLS 52.35 x 208.28

Tube (OD)	Tube (T)	Butt (B)	Spline (S)	Qty (S)	Length (L)	Total Slip	Type	Part #	Notes
116.58	4.57	107.64	76.20	16	324.86	88.90	1.00	25RP.6.001	
4.590	0.180	4.238	3.000		12.790	3.500			

Weld Yoke



Weld Yoke

Spicer Series: 1140 Suits:K5LGB80R 23.80 x 61.20

Tube (OD)	Tube (T)	Butt (B)	Length (L)	Angle (F)	Part #	Notes
			36.00		K1.26.GB717	
3.000	0.065	2.878				
50.80	1.65	47.70	35.10		K1.26.GB17	Solid butt
2.000	0.065	1.878	1.380			
63.50	1.65	60.40	34.50		K1.26.GB67	
2.500	0.065	2.378	1.360			
69.85	1.65	66.75	32.80		K1.26.GB137	
2.750	0.065	2.628	1.290			

Spicer Series: 1210 Suits:5.443X 26.99 x 61.93

Tube (OD)	Tube (T)	Butt (B)	Length (L)	Angle (F)	Part #	Notes
50.80	2.10	46.80	38.10		2.28.2417	
2.000	0.083	1.842	1.500			
63.50	1.65	60.40	38.10		2.28.1947	
2.500	0.065	2.378	1.500			
69.85	1.65	66.75	39.00		2.28.1947.1	
2.750	0.065	2.628	1.530			

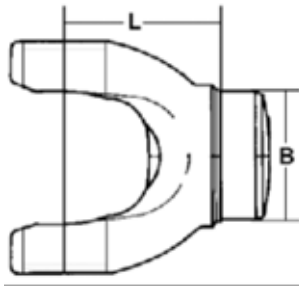
Spicer Series: 1300 Suits:K5L4R 26.99 x 74.61

Tube (OD)	Tube (T)	Butt (B)	Length (L)	Angle (F)	Part #	Notes
50.80	2.41	46.18	44.50		K2.26.GB17	Can use 687.15
2.000	0.095	1.818	1.750			
63.50	1.65	60.40	44.00		K2.26.GB1517	Can use 687.15
2.500	0.065	2.378	1.730			

Spicer Series: 1310 Suits:K5.13XR 26.99 x 81.76

Tube (OD)	Tube (T)	Butt (B)	Length (L)	Angle (F)	Part #	Notes
			43.00		AL2.28.30125	
3.000	0.125	2.758				
			62.00		AL2.28.35125	
3.500	0.125	3.258				
50.80	2.10	46.80	42.90		2.28.357	
2.000	0.083	1.842	1.690			
50.80	2.41	46.18	42.90		2.28.577	
2.000	0.095	1.818	1.690			
63.50	1.65	60.40	47.00		2.28.277	
2.500	0.065	2.378	1.850			
63.50	2.10	59.50	46.70		2.28.367	
2.500	0.083	2.342	1.840			
63.50	2.41	58.88	47.00		2.28.2700	
2.500	0.095	2.318	1.850			
69.85	1.65	66.75	62.00		2.28.307	
2.750	0.065	2.628	2.440			

Weld Yoke



Weld Yoke

69.85	2.10	65.85	42.90	2.28.1617
2.750	0.083	2.592	1.690	
76.20	1.65	73.10	42.90	2.28.327
3.000	0.065	2.878	1.690	
76.20	2.10	72.20	42.90	2.28.437
3.000	0.083	2.842	1.690	
76.20	2.10	72.20	54.00	2.28.437
3.000	0.083	2.842	2.126	
82.55	1.65	79.45	43.00	2.28.557
3.250	0.065	3.128	1.693	
88.90	1.65	85.80	42.90	2.28.397
3.500	0.065	3.378	1.690	

Spicer Series: 1330 Suits:RUJ3002 26.99 x 92.08

Tube (OD)	Tube (T)	Butt (B)	Length (L)	Angle (F)	Part #	Notes
63.50	2.10	59.50	43.70		2.28.1707	
2.500	0.083	2.342	1.720			
76.20	1.65	73.10	43.70		2.28.1177	
3.000	0.065	2.878	1.720			
76.20	2.10	72.20	43.70		2.28.1697	
3.000	0.083	2.842	1.720			
88.90	1.65	85.80	46.00		2.28.1977	
3.500	0.065	3.378	1.810			
88.90	2.10	84.90	46.00		2.28.1717	
3.500	0.083	3.342	1.810			

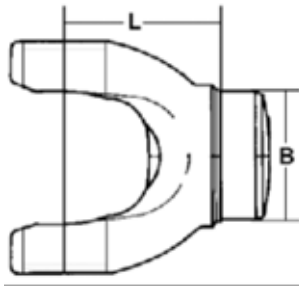
Spicer Series: 1350 Suits:5.178X 30.16 x 92.08

Tube (OD)	Tube (T)	Butt (B)	Length (L)	Angle (F)	Part #	Notes
			57.50		3.28.58	* C-End solid butt - not machined for tube
			2.260			
63.50	2.10	59.50	49.30		3.28.47	
2.500	0.083	2.342	1.940			
76.20	2.10	72.20	50.80		3.28.57	
3.000	0.083	2.842	2.000			
88.90	1.65	85.80	36.50		3.28.257	
3.500	0.065	3.378	1.810			
88.90	2.10	84.90	46.00		3.28.427	
3.500	0.083	3.342	1.811			

Spicer Series: 1350 Performance Suits:5.627X 30.16 x 92.08

Tube (OD)	Tube (T)	Butt (B)	Length (L)	Angle (F)	Part #	Notes
			44.50		AL3.28.40125	
4.000	0.125	3.758				
			44.50		AL3.28.40125	
4.000	0.125	3.758				

Weld Yoke



Weld Yoke

88.90	3.05	83.00	44.50	AL3.28.977	Aluminium 6061-T6 Use With AL3.5X.125 Tube
3.500	0.120	3.268	1.750		
127.00	3.18	120.84	73.50	AL3.28.50125	Aluminium 6061-T6 Use With AL5X.125.20 Tube
5.000	0.125	4.758	2.880		

Spicer Series: 1410 Suits:K5GB10R 30.16 x 106.35

Tube (OD)	Tube (T)	Butt (B)	Length (L)	Angle (F)	Part #	Notes
			60.00		3.28.017	* C-End solid butt - not machined for tube
			2.360			
50.80	2.76	45.48	52.00		3.28.657	
2.000	0.109	1.790	2.050			
76.20	1.65	73.10	54.00		3.28.367	
3.000	0.065	2.878				
76.20	2.10	72.20	54.10		3.28.97	
3.000	0.083	2.842	2.130			
76.20	2.41	71.58	54.20		3.28.267	
3.000	0.095	2.818	2.130			
88.90	2.10	84.90	54.10		3.28.557	
3.500	0.083	3.342	2.130			
88.90	2.41	84.28	54.10		3.28.1637	
3.500	0.095	3.318	2.130			
114.30	2.41	109.68	51.60		3.28.577	
4.500	0.095	4.318	2.030			

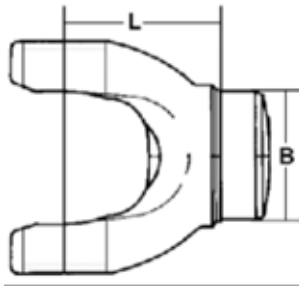
Spicer Series: 1480 Suits:5.188X 34.93 x 106.38

Tube (OD)	Tube (T)	Butt (B)	Length (L)	Angle (F)	Part #	Notes
88.90	2.10	84.90	51.60		3.28.537	
3.500	0.083	3.342	2.030			
88.90	2.41	84.28	52.00		3.28.567	
3.500	0.095	3.318	2.047			
101.60	2.10	97.60	51.60		3.28.507	
4.000	0.083	3.842	2.030			
114.30	2.41	109.68	51.60		3.28.517	
4.500	0.095	4.318	2.030			

Spicer Series: 1550 Suits:5.155X 34.93 x 126.20

Tube (OD)	Tube (T)	Butt (B)	Length (L)	Angle (F)	Part #	Notes
76.20	2.41	71.58	58.00		4.28.167	
3.000	0.095	2.818	2.283			
88.90	2.41	84.28	55.60		4.28.307	
3.500	0.095	3.318	2.190			
88.90	2.41	84.28	68.30		4.28.417	
3.500	0.095	3.318	2.690			
88.90	3.40	82.30	58.00		4.28.487	
3.500	0.134	3.240	2.283			

Weld Yoke



Weld Yoke

101.60	2.10	97.60	55.60	4.28.277
4.000	0.083	3.842	2.190	

Spicer Series: 1510 Suits:K5GB22R 39.70 x 115.90

Tube (OD)	Tube (T)	Butt (B)	Length (L)	Angle (F)	Part #	Notes
76.20	2.41	71.58	69.90	K4.26.GB477		
3.000	0.095	2.818	2.750			
88.90	2.41	84.28	71.90	K4.26.GB547		
3.500	0.095	3.318	2.830			

Spicer Series: 1650 Suits:5.165X 41.28 x 142.00

Tube (OD)	Tube (T)	Butt (B)	Length (L)	Angle (F)	Part #	Notes
3.500	0.134	3.240			5.28.357	

Spicer Series: 1610 Suits:5.279X 47.63 x 134.94

Tube (OD)	Tube (T)	Butt (B)	Length (L)	Angle (F)	Part #	Notes
88.90	3.40	82.30	76.20	5.28.627		
3.500	0.134	3.240	3.000			
103.90	4.57	94.96	76.20	5.28.327		
4.090	0.180	3.738	3.000			

Spicer Series: 1710 Suits:5.280X 49.21 x 154.78

Tube (OD)	Tube (T)	Butt (B)	Length (L)	Angle (F)	Part #	Notes
103.90	4.57	94.96	77.00	6.28.347		
4.090	0.180	3.738	3.030			
116.60	4.57	107.66	77.00	6.28.407		
4.590	0.180	4.238	3.030			
403.90	4.57	394.96	93.70	6.28.467		Wide Angle
4.090	0.180	3.738	3.690			

Spicer Series: 1760 Suits:5.407X 49.21 x 177.80

Tube (OD)	Tube (T)	Butt (B)	Length (L)	Angle (F)	Part #	Notes
103.90	4.57	94.96	77.00	6.3.28.17		
4.090	0.180	3.738	3.030			

Spicer Series: 1810 Suits:5.281X 49.21 x 191.69

Tube (OD)	Tube (T)	Butt (B)	Length (L)	Angle (F)	Part #	Notes
90.20	5.26	79.88	85.90	6.5.28.137		
3.550	0.207	3.144	3.380			
114.30	6.58	101.34	85.90	6.5.28.127		
4.500	0.259	3.990	3.380			
116.60	4.57	107.66	85.90	6.5.28.117		
4.590	0.180	4.238	3.380			

Spicer Series: 1880 Suits:5.308X 55.55 x 205.59

Tube (OD)	Tube (T)	Butt (B)	Length (L)	Angle (F)	Part #	Notes
114.30	6.57	101.36	101.60	8.28.147		
4.500	0.259	3.990	4.000			

Weld Yoke



Weld Yoke

114.30	6.57	101.36	101.60	8.28.17
4.500	0.259	3.990	4.000	

SPL Series: SPL170 Suits:SPL170X 55.00 x 164.00

Tube (OD)	Tube (T)	Butt (B)	Length (L)	Angle (F)	Part #	Notes
120.00	5.00	110.20	120.00	170.28.27		Suits Interaxle Fabrication
4.725	0.197	4.339	4.720			
132.00	6.00	120.20	94.00	170.28.17		
5.197	0.236	4.733	3.701			

SPL Series: SPL250 Suits:SPL250X 60.00 x 163.00

Tube (OD)	Tube (T)	Butt (B)	Length (L)	Angle (F)	Part #	Notes
132.00	6.00	120.20	104.00	250.28.17		
			4.094			

RPL Series: RPL20 Suits:CP20RPLS 52.35 x 174.75

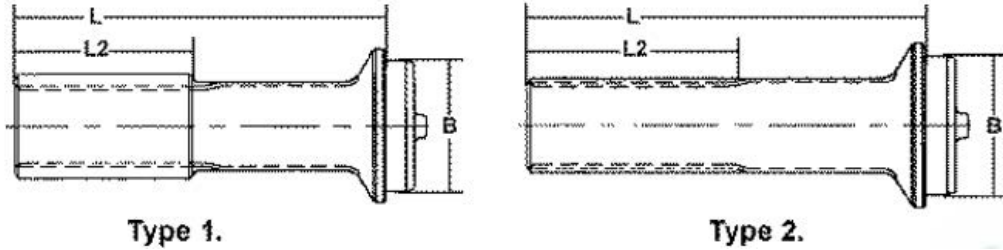
Tube (OD)	Tube (T)	Butt (B)	Length (L)	Angle (F)	Part #	Notes
			95.00	20RP.28.001		
4.090	0.180	3.738				

RPL Series: RPL25 Suits:CP25RPLS 52.35 x 208.28

Tube (OD)	Tube (T)	Butt (B)	Length (L)	Angle (F)	Part #	Notes
116.60	4.57	107.66	94.00	25RP.28.001		
4.590	0.180	4.238	3.700			



Stub



Stub

Spicer Series: 1140 Suits:K5LGB80R 23.80 x 61.20

Spline Ø	Qty	Tube (OD)	Tube (T)	Butt (B)	Length (L)	Length (L2)	Type	Part #	Notes
26.92 1.060	16					300.00 11.811		1.42.300	FULL LENGTH SPLINED BAR
26.92 1.060	16	50.80 2.000	1.60 0.065	47.80 1.878	103.80 4.090	44.45 1.750	1	K1.42.GB1901	K1.3.A360
26.92 1.060	16	63.50 2.500	1.65 0.065	60.40 2.378	105.99 4.173	44.50 1.752	1	K1.42.GB1921	K1.3.A360

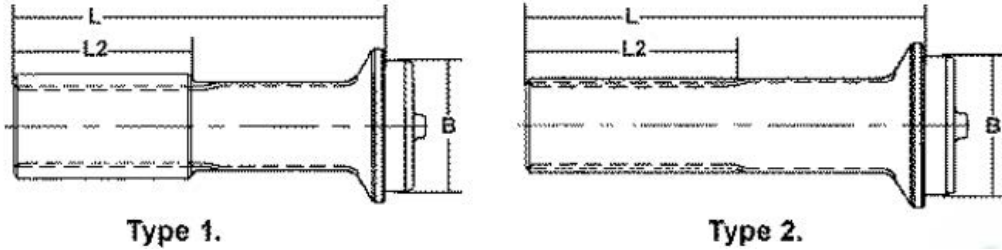
Spicer Series: 1210 Suits:5.443X 26.99 x 61.93

Spline Ø	Qty	Tube (OD)	Tube (T)	Butt (B)	Length (L)	Length (L2)	Type	Part #	Notes
31.75 1.250	16	31.75 1.250	3.04 0.120	25.87 1.018	155.70 6.130	50.80 2.000	1	2.40.1771	2.3.4441KX
31.75 1.250	16	44.45 1.750	1.65 0.065	41.35 1.628	291.79 11.488		1	2.40.971	10.3.121KX
31.75 1.250	16	50.80 2.000	2.11 0.083	46.78 1.842	152.40 6.000	50.80 2.000	1	2.40.1741	2.3.8861KX
31.75 1.250	16	63.50 2.500	1.65 0.065	60.40 2.378	196.90 7.750	63.50 2.500	1	2.40.2301	2.3.8961KX

Spicer Series: 1310 Suits:K5.13XR 26.99 x 81.76

Spline Ø	Qty	Tube (OD)	Tube (T)	Butt (B)	Length (L)	Length (L2)	Type	Part #	Notes
34.93 1.375	16					300.00 11.811		2.42.300	FULL LENGTH SPLINED BAR
34.95 1.375	16	50.80 2.000	2.10 0.083	46.80 1.842	131.80 5.188	57.15 2.250	1	2.40.1031S	STEEL SPLINE. LTD QTY'S AVAIL.
34.93 1.375	16	50.80 2.000	2.11 0.083	46.78 1.842	131.70 5.188	57.20 2.250	1	2.40.1031	2.3.128KX
34.93 1.375	16	50.80 2.000	2.11 0.083	46.78 1.842	157.20 6.188	57.20 2.250	1	2.40.2451	2.3.5221KX
34.93 1.375	16	50.80 2.000	2.41 0.095	46.18 1.818	129.00 5.080	44.50 1.750	1	2.40.2701	2.3.128KX
34.93 1.375	16	50.80 2.000	2.41 0.095	46.18 1.818	196.90 7.750	50.80 2.000	1	2.40.3081	2.3.5821KX
34.93 1.375	16	63.50 2.500	1.65 0.065	60.40 2.378	136.00 5.350	57.20 2.250	1	2.40.1041	2.3.128KX
34.93 1.375	16	63.50 2.500	1.65 0.065	60.40 2.378	129.00 5.080	50.80 2.000	1	2.40.2721	2.3.128KX (CAN USE 2.40.1041)
34.93 1.375	16	63.50 2.500	2.11 0.083	59.48 2.342	161.00 6.340	57.20 2.250	1	2.40.1711	2.3.5221KX
34.93 1.375	16	63.50 2.500	2.11 0.083	59.48 2.342	191.20 7.525	57.20 2.250	1	2.40.1851	2.3.5821KX
34.93 1.375	16	63.50 2.500	2.41 0.095	58.88 2.318	135.90 5.350	57.20 2.250	1	2.40.2891	2.3.128KX

Stub



Type 1.

Type 2.

Stub

34.93 1.375	16	76.20 3.000	1.65 0.065	73.10 2.878	163.60 6.440	57.20 2.250	1	2.40.1221	2.3.5221KX
34.93 1.375	16	76.20 3.000	1.65 0.065	73.10 2.878	193.70 7.625	57.20 2.250	1	2.40.2051	2.3.5821KX
34.93 1.375	16	76.20 3.000	2.11 0.083	72.18 2.842	164.00 6.460	57.20 2.250	1	2.40.1521	2.3.5221KX
34.93 1.375	16	76.20 3.000	2.11 0.083	72.18 2.842	219.10 8.625	172.20 6.780	2	2.40.1871	2.3.5821KX WITH SPLINED DUSTCAP

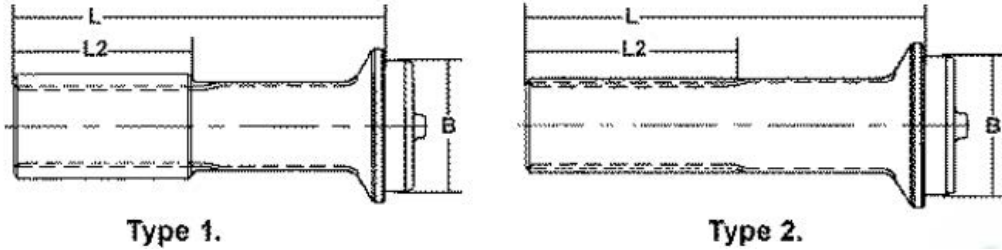
Spicer Series: 1350 Suits:5.178X 30.16 x 92.08

Spline Ø	Qty	Tube (OD)	Tube (T)	Butt (B)	Length (L)	Length (L2)	Type	Part #	Notes
					165.00			3.40.1511	
		3.000	0.083	2.842					
38.10 1.500	16				300.00 11.811			3.42.300	FULL LENGTH SPLINED BAR
38.10 1.500	16	50.80 2.000	2.77 0.109	45.46 1.790	177.00 6.970	80.00 3.150	1	3.40.3101	STEEL SPLINE
38.10 1.500	16	63.50 2.500	2.10 0.083	59.50 2.342	198.00 7.795	76.20 3.000	1	3.40.1410.1	HAS SHOULDER FOR BYG4582
38.10 1.500	16	63.50 2.500	2.11 0.083	59.48 2.342	141.20 5.560	63.50 2.500	1	3.40.1471	3.3.598KX
38.10 1.500	16	76.20 3.000	2.10 0.083	72.20 2.842	198.00 7.795	76.20 3.000	1	3.40.1410	HAS SHOULDER FOR BYG4582
38.10 1.500	16	76.20 3.000	2.11 0.083	72.18 2.842	150.90 5.940	63.50 2.500	1	3.40.1101	CAN USE 3.40.3901
38.10 1.500	16	76.20 3.000	2.11 0.083	72.18 2.842	184.20 7.250	63.50 2.500	1	3.40.1611	CAN USE 3.40.3891
38.10 1.500	16	76.20 3.000	2.41 0.095	71.58 2.818	350.00 13.780	75.00 2.950	1	3.40.350	Limited Stocks Available. Special for cross member clearance PTO
38.10 1.500	16	76.20 3.000	2.41 0.095	71.58 2.818	183.00 7.200	75.00 2.950	1	3.40.3891	3.3.488KX CAN REPLACE 3.40.1421
38.10 1.500	16	76.20 3.000	2.41 0.095	71.58 2.818	156.00 6.140	65.00 2.560	1	3.40.3901	CAN USE 3.40.1101
38.10 1.500	16	88.90 3.500	0.08 0.083	88.93 3.342	191.30 7.530	76.20 3.000	1	3.40.1491	3.3.508KX / 3.3.488KX
39.62 1.560	16	88.90 3.500	2.10 0.083	84.90 3.342	171.00 6.732	76.20 3.000	1	3.40.1571S	STEEL SPLINE LTD QTY'S AVAIL.

Spicer Series: 1410 Suits:K5GB10R 30.16 x 106.35

Spline Ø	Qty	Tube (OD)	Tube (T)	Butt (B)	Length (L)	Length (L2)	Type	Part #	Notes
					155.00			3.40.1511	
1.500	16	3.000	0.083	2.842					

Stub



Stub

Spicer Series: 1480 Suits:5.188X 34.93 x 106.38

Spline Ø	Qty	Tube (OD)	Tube (T)	Butt (B)	Length (L)	Length (L2)	Type	Part #	Notes
39.62	16	88.90	2.11	84.88	222.30	76.20	1	3.40.1391	3.3.1641KX
1.560		3.500	0.083	3.342	8.750	3.000			
39.62	16	88.90	2.11	84.88	273.10	76.20	1	3.40.1411	3.3.1661KX
1.560		3.500	0.083	3.342	10.750	3.000			
39.62	16	88.90	2.11	84.88	171.50	76.20	1	3.40.1571	3.3.1601KX
1.560		3.500	0.083	3.342	6.750	3.000			

Spicer Series: 1550 Suits:5.155X 34.93 x 126.20

Spline Ø	Qty	Tube (OD)	Tube (T)	Butt (B)	Length (L)	Length (L2)	Type	Part #	Notes
1.750	16				330.00			4.42.330	Full Spline Bar - No Butt also Suit Mechanics Applications

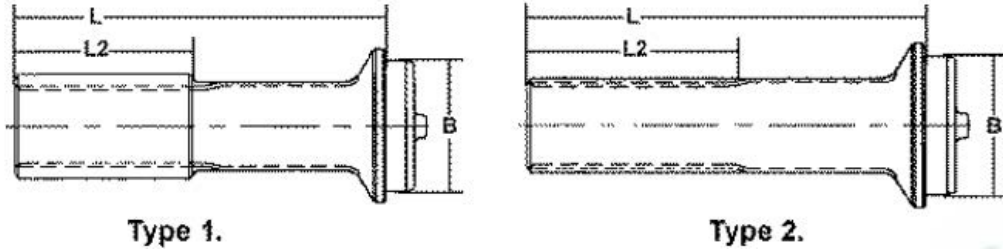
Spicer Series: 1510 Suits:K5GB22R 39.70 x 115.90

Spline Ø	Qty	Tube (OD)	Tube (T)	Butt (B)	Length (L)	Length (L2)	Type	Part #	Notes
44.45	16				300.00			4.42.300	FULL LENGTH SPLINED BAR
1.750					11.811				
44.45	16	88.90	2.41	84.28	165.10	68.00	1	4.40.1801	STEEL SPLINE. LTD QTY'S AVAIL.
1.750		3.500	0.095	3.318	6.500	2.675			
44.45	16	88.90	2.41	84.28	234.20	76.20	1	4.40.721	4.3.1431KX
1.750		3.500	0.095	3.318	9.220	3.000			
44.45	16	88.90	2.41	84.28	172.00	76.20	1	4.40.761	4.3.1241KX
1.750		3.500	0.095	3.318	6.770	3.000			
44.45	16	114.30	2.41	109.68	180.00	76.20	1	4.40.491	LTD. QTY'S AVAIL.
1.750		4.500	0.095	4.318	7.080	3.000			

Spicer Series: 1610 Suits:5.279X 47.63 x 134.94

Spline Ø	Qty	Tube (OD)	Tube (T)	Butt (B)	Length (L)	Length (L2)	Type	Part #	Notes
2.000	16		3.500	-6.992	259.00			5.40.1041	Suit 5.3.2141KX
					192.00			5.40.451S	
		3.500	0.950	1.608					
50.80	16				300.00			5.42.300	FULL LENGTH SPLINED BAR
2.000					11.811				
50.80	16				370.00			5.42.370	FULL LENGTH SPLINED BAR
2.000					14.566				
2.000	16							5.42.450	4140
50.80	16	88.90	2.41	84.28	192.10	88.90	1	5.40.451S	STEEL SPLINE
2.000		3.500	0.095	3.318	7.560	3.500			
50.80	16	88.90	3.40	82.30	246.10	88.90	1	5.40.1011	5.3.2261KX
2.000		3.500	0.134	3.240	9.690	3.500			
50.80	16	88.90	3.40	82.30	258.80	88.90	1	5.40.1041	5.3.2141KX
2.000		3.500	0.134	3.240	10.190	3.500			

Stub



Stub

Spicer Series: 1710 Suits:5.280X 49.21 x 154.78

Spline Ø	Qty	Tube (OD)	Tube (T)	Butt (B)	Length (L)	Length (L2)	Type	Part #	Notes
63.50 2.500	16				300.00 11.811			6.42.300	FULL LENGTH SPLINED BAR
63.50 2.500	16	90.00 3.544	4.50 0.177	81.20 3.198	276.10 10.870	244.60 9.629	2	6.40.560	STEEL SPLINE STUB
63.50 2.500	16	103.90 4.090	4.57 0.180	94.96 3.738	268.20 10.560	268.00 10.551	1	6.40.521	6.3.2651KX
63.50 2.500	16	103.90 4.090	4.57 0.180	94.96 3.738	235.00 9.250	101.60 4.000	1	6.40.541	6.3.2671KX
63.50 2.500	16	166.58 4.590	4.57 0.180	157.64 4.238	270.80 10.660	101.60 4.000	1	6.40.621	6.3.2651KX

Spicer Series: 1810 Suits:5.281X 49.21 x 191.69

Spline Ø	Qty	Tube (OD)	Tube (T)	Butt (B)	Length (L)	Length (L2)	Type	Part #	Notes
76.20 3.000	16	116.58 4.590	4.57 0.180	107.64 4.238	285.75 11.250	114.30 4.500	1	6.5.40.191	6.5.3.1371KX
76.20 3.000	16	116.58 4.590	4.57 0.180	107.64 4.238	240.50 9.470	114.30 4.500	1	6.5.40.201	6.5.3.1351KX

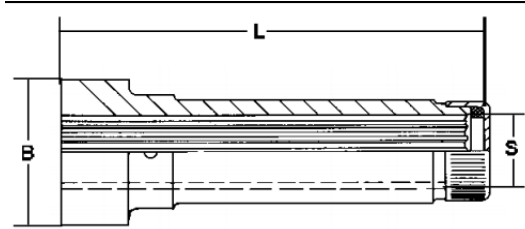
Spicer Series: 1880 Suits:5.308X 55.55 x 205.59

Spline Ø	Qty	Tube (OD)	Tube (T)	Butt (B)	Length (L)	Length (L2)	Type	Part #	Notes
76.20 3.000	16	114.30 4.500	6.58 0.259	101.34 3.990	292.90 11.530	114.30 4.500	1	8.40.101	USE 6.5-40-191 MACHINE BUTT



SPICER SERVICES AUSTRALIA

Barrel



Barrel

Spicer Series: 1140 Suits:K5LGB80R 23.80 x 61.20

Spline (S)	Qty (S)	Butt (B)	Length (L)	Part #	Notes
26.93	16.00	63.70	166.37	1.55.A0135	
1.060		2.508	6.550		

Spicer Series: 1300 Suits:K5L4R 26.99 x 74.61

Spline (S)	Qty (S)	Butt (B)	Length (L)	Part #	Notes
34.93	16.00	46.18	134.87	K2.55.008	Suits CB20 / CB21 Used with K2.82.001 & 2.82.001
1.375		1.818	5.310		
34.93	16.00	46.18	132.08	K2.55.700	L/R Discovery Suit K2.82.001
1.375		1.818	5.200		

Spicer Series: 1310 Suits:K5.13XR 26.99 x 81.76

Spline (S)	Qty (S)	Butt (B)	Length (L)	Part #	Notes
34.93	16.00	65.20	150.00	2.55.A0118	Butt Not Machined
1.375		2.567	5.906		

Spicer Series: 1350 Suits:5.178X 30.16 x 92.08

Spline (S)	Qty (S)	Butt (B)	Length (L)	Part #	Notes
38.10	16.00	70.05	177.80	3.55.A0128	Butt Not Machined
1.500		2.758	7.000		

Spicer Series: 1480 Suits:5.188X 34.93 x 106.38

Spline (S)	Qty (S)	Butt (B)	Length (L)	Part #	Notes
44.45	16.00	89.10	228.60	4.55.A0138	Butt Not Machined
1.750		3.508	9.000		

Spicer Series: 1610 Suits:5.279X 47.63 x 134.94

Spline (S)	Qty (S)	Butt (B)	Length (L)	Part #	Notes
50.80	16.00	89.10	215.90	5.55.A0148	Butt Not Machined
2.000		3.508	8.500		

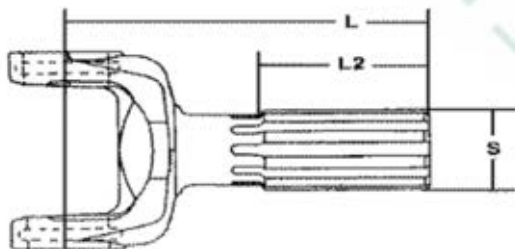
Spicer Series: 1710 Suits:5.280X 49.21 x 154.78

Spline (S)	Qty (S)	Butt (B)	Length (L)	Part #	Notes
63.50	16.00	100.20	260.00	6.55.A0158	Butt Not Machined
2.500		3.945	10.236		

Spicer Series: 1810 Suits:5.281X 49.21 x 191.69

Spline (S)	Qty (S)	Butt (B)	Length (L)	Part #	Notes
76.20	16.00	114.50	266.70	6.5.55.A0168	Part Of BOM 6.5.45.001 Only Butt Not Machined
3.000		4.508	10.500		

Yoke Shaft



Yoke Shaft

Spicer Series: 1140 Suits:K5LGB80R 23.80 x 61.20

Spline (S)	Qty (S)	Length (L)	Length (L2)	Angle (F)	Part #	Notes
26.97	16	110.00	44.00		K1.82.2001	Shorten By 12mm To Make 1.82.21
1.062		4.331	1.732			

Spicer Series: 1300 Suits:K5L4R 26.99 x 74.61

Spline (S)	Qty (S)	Length (L)	Length (L2)	Angle (F)	Part #	Notes
34.93	16	185.00	90.00		K2.82.001	Discovery K2.55.008 Volvo K2.55.700
1.375		7.283	3.543			

Spicer Series: 1310 Suits:K5.13XR 26.99 x 81.76

Spline (S)	Qty (S)	Length (L)	Length (L2)	Angle (F)	Part #	Notes
34.93	16	185.00	85.00		2.82.001	Suits Volvo K2.55.008
1.375		7.283	3.346			
34.93	16	137.00	50.80	20	2.82.21	2.3.348KX
1.375		5.394	2.000			
34.93	16	167.00	50.80	30	2.82.A111	2.3.128KX
1.375		6.575	2.000			
38.10	16	174.00	57.20	20	2.82.002	Ford Transit Barrel 3.55.165
1.500		6.850	2.252			

Spicer Series: 1350 Suits:5.178X 30.16 x 92.08

Spline (S)	Qty (S)	Length (L)	Length (L2)	Angle (F)	Part #	Notes
38.10	16	173.00	63.50	9	3.82.181	3.3.598KX
1.500		6.811	2.500			
38.10	16	132.00	50.80	20	3.82.61	3.3.388KX
1.500		5.197	2.000			
38.10	16	132.00	50.80	20	3.82.61ST	Steel Spline
1.500		5.197	2.000			

Spicer Series: 1410 Suits:K5GB10R 30.16 x 106.35

Spline (S)	Qty (S)	Length (L)	Length (L2)	Angle (F)	Part #	Notes
38.10	16	145.00	50.80	20	3.82.145	Used with 3.3.118KX 217mm C-C comp
1.500		5.709	2.000			
38.10	16	126.20	50.80	20	3.82.81	3.3.468KX
1.500		4.969	2.000			

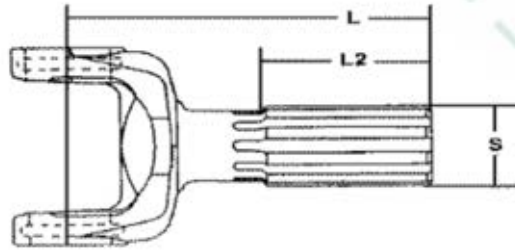
Spicer Series: 1480 Suits:5.188X 34.93 x 106.38

Spline (S)	Qty (S)	Length (L)	Length (L2)	Angle (F)	Part #	Notes
39.60	16	145.00	50.80		3.82.1504	Use With 3.3.1601KX For 232mm C TO C COMP.
1.559		5.709	2.000			
44.45	16	144.00	50.80	20	3.82.1505	3.3.1505KX
1.750		5.669	2.000			

Spicer Series: 1550 Suits:5.155X 34.93 x 126.20

Spline (S)	Qty (S)	Length (L)	Length (L2)	Angle (F)	Part #	Notes
63.50	16	115.80	39.60	8	4.82.191	
2.500		4.559	1.559			

Yoke Shaft



Yoke Shaft

Spicer Series: 1610 Suits:5.279X 47.63 x 134.94

Spline (S)	Qty (S)	Length (L)	Length (L2)	Angle (F)	Part #	Notes
2.000	16	210.00			5.82.9211	
50.80	16	265.00	85.00	30	5.82.661	5.3.108KX - 5.3.288KX
2.000		10.433	3.346			
50.80	16	200.00	69.80	22	5.82.921	5.3.108KX
2.000		7.874	2.748			

Spicer Series: 1710 Suits:5.280X 49.21 x 154.78

Spline (S)	Qty (S)	Length (L)	Length (L2)	Angle (F)	Part #	Notes
63.50	16	355.60	101.60	45	6.82.1061.1	
2.500		14.000	4.000			
63.50	16	407.20	101.60	45	6.82.1061.11	
2.500		16.031	4.000			
63.50	16	381.80	101.60	45	6.82.1061.3	
2.500		15.031	4.000			
63.50	16	245.30	88.90	24	6.82.1171.10	
2.500		9.657	3.500			
63.50	16	207.30	76.20	22	6.82.1251	
2.500		8.161	3.000			
63.50	16	307.20	88.90	45	6.82.1281	
2.500		12.094	3.500			
63.50	16	332.50	88.90	45	6.82.1281.1	
2.500		10.091	3.500			

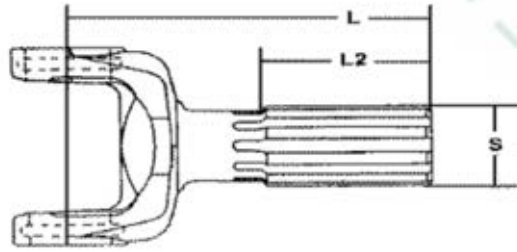
Spicer Series: 1760 Suits:5.407X 49.21 x 177.80

Spline (S)	Qty (S)	Length (L)	Length (L2)	Angle (F)	Part #	Notes
63.50	16	279.40	101.60	35	6.3.82.21.1	
2.500		11.000	4.000			

Spicer Series: 1810 Suits:5.281X 49.21 x 191.69

Spline (S)	Qty (S)	Length (L)	Length (L2)	Angle (F)	Part #	Notes
		368.00			6.5.82.461.9	
		14.440				
76.20	16	290.50	101.60	45	6.5.82.451.1	
3.000		11.437	4.000			
76.20	16	382.50	114.30	45	6.5.82.461.10	
3.000		15.059	4.500			
76.20	16	414.30	114.30	45	6.5.82.461.12	
3.000		16.311	4.500			
76.20	16	325.40	114.30	30	6.5.82.461.13	
3.000		12.811	4.500			
76.20	16	347.60	114.30	45	6.5.82.461.4	
3.000		13.685	4.500			

Yoke Shaft



Yoke Shaft

76.20 3.000	16	350.80 13.811	114.30 4.500	45	6.5.82.461.8
82.55 3.250	18	170.70 6.720	69.90 2.752	12	6.5.82.511.1
82.55 3.250	18	183.40 7.220	69.90 2.752	12	6.5.82.511.3

RPL

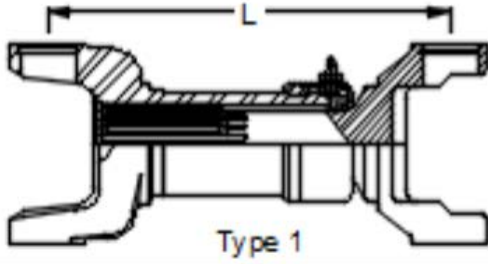
Series: RPL20 Suits:CP20RPLS 52.35 x 174.75

Spline (S)	Qty (S)	Length (L)	Length (L2)	Angle (F)	Part #	Notes
63.50 2.500	16	341.63 13.450	93.98 3.700	42	20RP.82.1345	Use with 20RP.3.001KX
63.50 2.500	16	386.08 15.200	93.98 3.700	42	20RP.82.1520	Use with 20RP.3.001KX

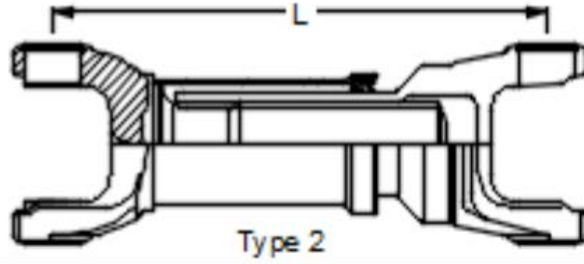


DRIVE SHAFT SERVICES AUSTRALIA

Slip Yoke & Yoke Shaft



Type 1



Type 2

Only C/C assembly. See complete shaft section for more options.

Slip Yoke & Yoke Shaft

Spicer Series: 1310 Suits:K5.13XR 26.99 x 81.76

Length (L)	Total Slip	Spline (S)	Qty (S)	Type	Angle (F)	Part #	Notes
158.00	39.88	34.93	16	1	20	2.03.158	
6.220	1.570	1.375					
158.00				1		2.03.158LZ	
285.00	50.00	34.93	16	1		2.03.285	
11.220	1.969	1.375					

Spicer Series: 1410 Suits:K5GB10R 30.16 x 106.35

Length (L)	Total Slip	Spline (S)	Qty (S)	Type	Angle (F)	Part #	Notes
250.00	34.80	38.10	16	1	22	3.03.250LZ	
9.842	1.370	1.500					
335.00	110.00			2	25	3.03.335LZ	
13.189	4.330						

Spicer Series: 1550 Suits:5.155X 34.93 x 126.20

Length (L)	Total Slip	Spline (S)	Qty (S)	Type	Angle (F)	Part #	Notes
234.00	40.00					4.03.234	

Spicer Series: 1510 Suits:K5GB22R 39.70 x 115.90

Length (L)	Total Slip	Spline (S)	Qty (S)	Type	Angle (F)	Part #	Notes
170.00	35.05			2	8	K4.03.170LZ	
6.693	1.380						
270.00				2		K4.03.270LZ	
10.630							

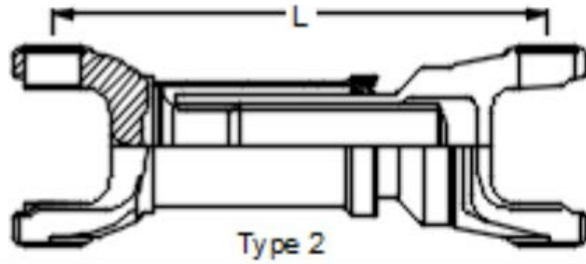
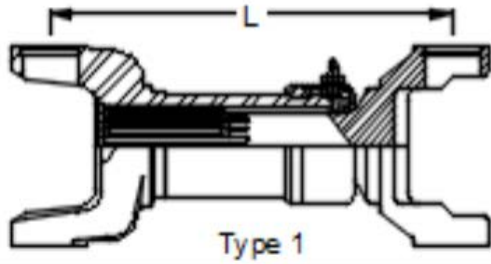
Spicer Series: 1610 Suits:5.279X 47.63 x 134.94

Length (L)	Total Slip	Spline (S)	Qty (S)	Type	Angle (F)	Part #	Notes
141.00				1		5.03.141	
5.551							
150.00				1	8	5.03.150	
5.906							

Spicer Series: 1710 Suits:5.280X 49.21 x 154.78

Length (L)	Total Slip	Spline (S)	Qty (S)	Type	Angle (F)	Part #	Notes
167.00	24.00	82.55	18	1	8	6.03.167	
6.575	0.945	3.250					
194.00	24.00	82.55	18	1	8	6.03.194	
7.638	0.945	3.250					
254.00	53.00	63.50	16	1		6.03.254LZ	12.087" Ext.
10.000	2.087	2.500					
320.00	53.00	63.50	16	1		6.03.320LZ	14.685" Ext.
12.598	2.087	2.500					
335.00	65.00	63.50	16	1	22	6.03.335LZ	15.748" Ext
13.189	2.559	2.500					

Slip Yoke & Yoke Shaft



Only C/C assembly. See complete shaft section for more options.

Slip Yoke & Yoke Shaft

355.00 13.976	121.00 4.764	63.50 2.500	16	1	22	6.03.355LZ	18.740" Ext
375.00 14.764	145.00 5.709	63.50 2.500	16	1	22	6.03.375LZ	20.472" Ext.
397.00 15.630	100.00 3.937	63.50 2.500	16	1		6.03.400LZ	19.567" Ext
400.00 15.748		63.50 2.500	16	2	30	6.03.400LZ.1	Euro Style Full Spline Y/shaft
415.00 16.339	135.00 5.315	63.50 2.500	16	1	45	6.03.415LZ	21.654" Ext
425.00 16.732	149.00 5.866	63.50 2.500	16	1	45	6.03.425.2LZ	22.598" Ext
433.00 17.047	159.00 6.261	63.50 2.500	16	1	45	6.03.433LZ	22.638" Ext.
486.00 19.134	154.00 6.063	63.50 2.500	16	1	45	6.03.486LZ	25.197" Ext.

Spicer Series: 1810 Suits:5.281X 49.21 x 191.69

Length (L)	Total Slip	Spline (S)	Qty (S)	Type	Angle (F)	Part #	Notes
208.00 8.189		82.55 3.250	18	1	12	6.5.03.208	

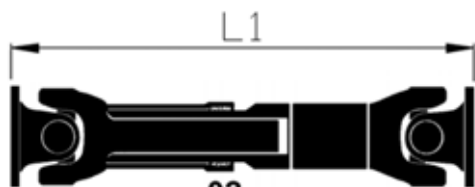
SPL Series: SPL170 Suits:SPL170X 55.00 x 164.00

Length (L)	Total Slip	Spline (S)	Qty (S)	Type	Angle (F)	Part #	Notes
150.00				3		1070.03.482	
150.00				3		170.03.443X	

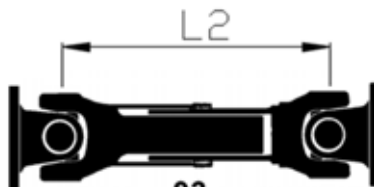


SERVICERS AUSTRALIA

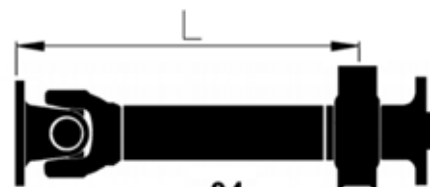
Complete Shaft Assembly



Prop Shaft Assembly



Yoke Shaft Assembly



Centre Bearing Shaft Assembly

Complete Shaft Assembly

Spicer Series: 1140 Suits:K5LGB80R 23.80 x 61.20

Length (L)	Length (L1)	Length (L2)	Total Slip	Brg Ø (P)	Type	Part #	Notes
1265.00						10.02.1265.1	Suit Cab Over Application
		1165.00			2	K1.02.1165	1140 PSA C/C/ Stub Unwelded Inc Kits
		45.866					

Spicer Series: 1310 Suits:K5.13XR 26.99 x 81.76

Length (L)	Length (L1)	Length (L2)	Total Slip	Brg Ø (P)	Type	Part #	Notes
1470.00					2	2.02.1470	2.2.329 FI-FI Stub Unwelded
57.874							
225.00					2	2.03.225LZ	2.2.239 FI-FI
8.858							

Spicer Series: 1350 Suits:5.178X 30.16 x 92.08

Length (L)	Length (L1)	Length (L2)	Total Slip	Brg Ø (P)	Type	Part #	Notes
241.00					3	3.03.241LZ.1350	3.2.119 Flanges Both Ends
9.488							

Spicer Series: 1410 Suits:K5GB10R 30.16 x 106.35

Length (L)	Length (L1)	Length (L2)	Total Slip	Brg Ø (P)	Type	Part #	Notes
1780.00					2	3.02.1780	Unwelded / Includes Unis
70.078							
241.00					3	3.03.241LZ.1410	3.2.159 Flanges Both Ends
9.488							
1500.00						3.04.1500S	Inc 210391.1X
1680.00					4	3.04.1680	Unwelded / Includes 210391.1X & Uni
66.141							

Spicer Series: 1480 Suits:5.188X 34.93 x 106.38

Length (L)	Length (L1)	Length (L2)	Total Slip	Brg Ø (P)	Type	Part #	Notes
216.00					3	4.03.216LZ.1480	3.2.479 Flanges Both Ends
8.504							

Spicer Series: 1550 Suits:5.155X 34.93 x 126.20

Length (L)	Length (L1)	Length (L2)	Total Slip	Brg Ø (P)	Type	Part #	Notes
248.00					3	4.03.248LZ.1550	4.2.669 Flanges Fitted Both Ends
9.764							

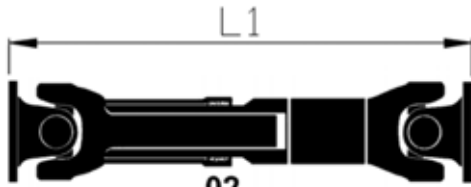
Spicer Series: 1610 Suits:5.279X 47.63 x 134.94

Length (L)	Length (L1)	Length (L2)	Total Slip	Brg Ø (P)	Type	Part #	Notes
230.00					3	5.03.231LZ	5.2.619 Flanges Fitted Both Ends
9.055							

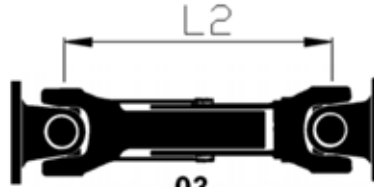
Spicer Series: 1710 Suits:5.280X 49.21 x 154.78

Length (L)	Length (L1)	Length (L2)	Total Slip	Brg Ø (P)	Type	Part #	Notes
270.00					3	6.03.270LZ	6.2.769 Flanges Fitted Both Ends
10.630							

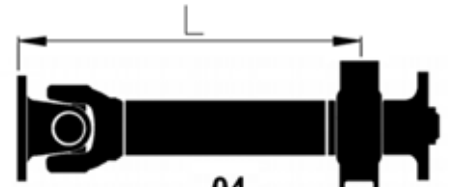
Complete Shaft Assembly



.02
Prop Shaft Assembly



.03
Yoke Shaft Assembly



.04
Centre Bearing Shaft Assembly

Complete Shaft Assembly

Spicer Series: 1810 Suits:5.281X 49.21 x 191.69

Length (L)	Length (L1)	Length (L2)	Total Slip	Brg Ø (P)	Type	Part #	Notes
340.00					3	6.5.03.340LZ	6.5.2.359 Flanges Fitted Both Ends
13.386							

SPL Series: SPL170 Suits:SPL170X 55.00 x 164.00

Length (L)	Length (L1)	Length (L2)	Total Slip	Brg Ø (P)	Type	Part #	Notes
443.00					3	170.03.443	Interaxle Centre - Centre Including Kits
17.440							
482.00					3	170.03.482	Interaxle Centre - Centre Including Kits
18.976							

RPL Series: RPL20 Suits:CP20RPLS 52.35 x 174.75

Length (L)	Length (L1)	Length (L2)	Total Slip	Brg Ø (P)	Type	Part #	Notes
420.00					3	20RP.03.420	550mm C/-C/ Ext.
475.00					1	20RP.03.475	

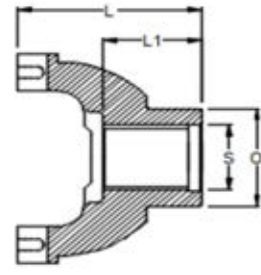
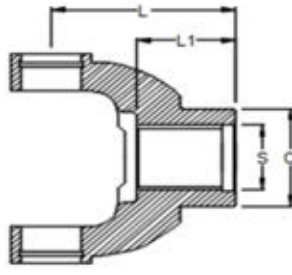
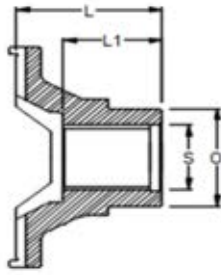
RPL Series: RPL25 Suits:CP25RPLS 52.35 x 208.28

Length (L)	Length (L1)	Length (L2)	Total Slip	Brg Ø (P)	Type	Part #	Notes
					2	25RP.02.001	Please inquire for current stock lengths
					4	25RP.04.001	Please inquire for current stock lengths



DRIVE SERVICES AUSTRALIA

End Yoke



End Yoke

Spicer Series: 1210 Suits:5.443X 26.99 x 61.93

Spline (S)	Qty(S)	Hub (O)	Length (L)	Length (L1)	Angle	Location	Type	Part #	Notes
29.10	26	41.28					CV	2.4.5891	SCV42 Pattern
1.146		1.625							

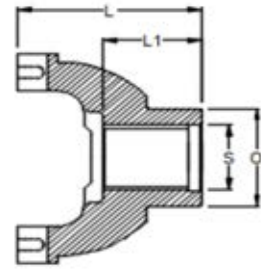
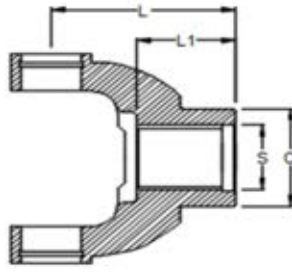
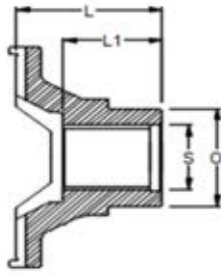
Spicer Series: 1310 Suits:K5.13XR 26.99 x 81.76

Spline (S)	Qty(S)	Hub (O)	Length (L)	Length (L1)	Angle	Location	Type	Part #	Notes
28.57	10	39.37	76.20	38.10	13		CV	2.4.4061X	Dana T.Case TC20
26.000		1.550	3.000	1.500			HR		
28.58	10	39.37	76.20	38.10			U-Bolt	2.4.2791	
1.125		1.550	3.000	1.500			HR		
29.10	26	39.37	76.20	38.10	13		CV	2.4.4341	Dana T.Case TC30
1.146		1.550	3.000	1.500			HR		
29.10	26	39.37	76.20	38.10	22		U-Bolt	2.4.8091X	Dana Axle 30 - 44 - 50
1.146		1.550	3.000	1.500			HR		
30.70	27	38.61	77.72	37.59			Strap	2.4.2007.1X	GM 10 Bolt Diff
1.209		1.520	3.060	1.480			HR		
31.37	28	46.03	127.00	61.47			U-Bolt	2.4.3104.06LONG	FORD 9" RUJ2039
1.235		1.812	5.000	2.420			HR		
31.37	28	46.03	102.36	61.47	25		U-Bolt	2.4.FD01X	FORD 9"
1.235		1.812	4.030	2.420			HR		
31.75	10	50.80	83.31	44.45	30		U-Bolt	2.4.4471X	IHC Navistar
1.250		2.000	3.280	1.750			HR		
32.41	29	47.63	74.68	38.10	18		U-Bolt	2.4.3801X	Dana Axle 60 - 70
1.276		1.875	2.940	1.500			HR		
33.32	30	49.28	80.26	29.21			Strap	2.4.GM03X	GM 10 Bolt
1.312		1.940	3.160	1.150			HR		
33.73	30	44.20	65.79	30.23			Strap	2.4.GM01X	GM 12 Bolt
1.328		1.740	2.590	1.190			HR		
34.93	10	53.98	87.33	50.80	22		U-Bolt	2.4.1731	New Process G.Box 420 - 435, Warner G.Box T98, Spicer T.Case 23 - 24
1.375		2.125	3.438	2.000			HR		
35.58	32	53.98	87.38	50.80	22		U-Bolt	2.4.4191	New Process T.Case 203 - 205 Input
1.401		2.125	3.440	2.000			HR		
35.58	32	47.63	98.55	50.80	13		CV	2.4.5341	New Process T.Case 203 - 205 Input
1.401		1.875	3.880	2.000			HR		
35.58	32	49.28	87.38	50.80			Strap	2.4.JK01	JK Jeep Wrangler
1.401		1.940	3.440	2.000			HR		

Spicer Series: 1330 Suits:RUJ3002 26.99 x 92.08

Spline (S)	Qty(S)	Hub (O)	Length (L)	Length (L1)	Angle	Location	Type	Part #	Notes
31.37	28	46.03	102.36	61.47			U-Bolt	2.4.E6TZ	Ford 9" Diff U-Bolt Part # 105
1.235		1.812	4.030	2.420			HR		
33.73	30	44.20	65.79	30.23			Strap	2.4.GM02X	GM 12 Bolt
1.328		1.740	2.590	1.190			HR		

End Yoke



End Yoke

35.58	32	47.63	98.55	50.80	13	CV	2.4.5441	New Process T.Case 203 - 205
1.401		1.875	3.880	2.000		HR		

Spicer Series: 1350 Suits:5.178X 30.16 x 92.08

Spline (S)	Qty(S)	Hub (O)	Length (L)	Length (L1)	Angle	Location	Type	Part #	Notes
31.36	28	46.03	127.00	61.47			U-Bolt HR	3.4.3504.08LONG	Ford 9" 5.178X
1.235		1.812	5.000	2.420					
33.32	30	53.59	81.03	29.21			Strap HR	3.4.0880.1X	GM Light Truck
1.312		2.110	3.190	1.150					
35.58	32	53.98	88.90	50.80	22		U-Bolt HR	3.4.6211	New Process T.Case 203 - 205
1.401		2.125	3.500	2.000					
40.38	30	60.20	95.25	41.40			U-Bolt HR	3.4.0882.1X	GM Light Truck
1.590		2.370	3.750	1.630					

Spicer Series: 1410 Suits:K5GB10R 30.16 x 106.35

Spline (S)	Qty(S)	Hub (O)	Length (L)	Length (L1)	Angle	Location	Type	Part #	Notes
32.41	29	47.63	80.98	38.10	22		Strap HR	3.4.5711.1X	Dana Axle 60 - 61 - 70
1.276		1.875	3.188	1.500					
40.38	30	60.20	95.25	41.40			Strap HR	3.4.0884.1X	GM Light Truck
1.590		2.370	3.750	1.630					

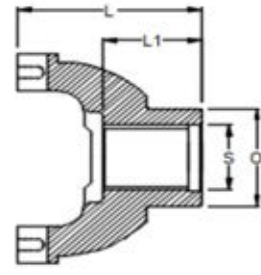
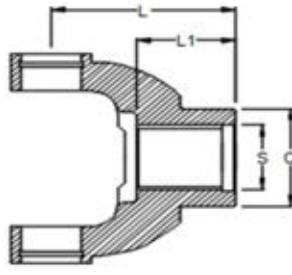
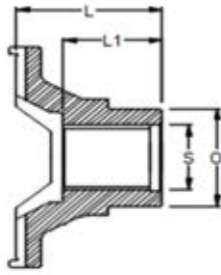
Spicer Series: 1140 Suits:K5LGB80R 23.80 x 61.20

Spline (S)	Qty(S)	Hub (O)	Length (L)	Length (L1)	Angle	Location	Type	Part #	Notes
			80.00	46.00			FR	K1.4.007	Solid Boss
			3.150	1.811					

Spicer Series: 1310 Suits:K5.13XR 26.99 x 81.76

Spline (S)	Qty(S)	Hub (O)	Length (L)	Length (L1)	Angle	Location	Type	Part #	Notes
		53.59	65.00	38.10			FR	2.4.177B	Solid Boss
		2.110	2.560	1.500					
22.23		53.59	65.00	38.10			FR	2.4.583	.875 Bore & .250 Key
0.875		2.110	2.560	1.500					
25.40		50.80	65.00	38.10			FR	2.4.473	1.000 Bore & .250 Key
1.000		2.000	2.560	1.500					
28.58		53.59	65.00	38.10			FR	2.4.503	1.125 Bore & .250 Key
1.125		2.110	2.560	1.500					
28.58		53.60	65.00	38.10			FR	2.4.523	1.125 Bore & .312 Key
1.125		2.110	2.560	1.500					
31.75		53.59	65.00	38.10			FR	2.4.533	1.250 Bore & .312 Key
1.250		2.110	2.560	1.500					
31.75		53.59	75.44	38.10			HR U-Bolt	2.4.783	1.250 Bore & .312 Key
1.250		2.110	2.970	1.500					
34.93		50.80	65.00	38.10			FR	2.4.803	1.375 Bore & .375 Key
1.375		2.000	2.560	1.500					
38.10		53.59	65.00	38.10			FR	2.4.1233	1.500 Bore & .375 Key
1.500		2.110	2.560	1.500					

End Yoke



End Yoke

Spicer Series: 1350 Suits:5.178X 30.16 x 92.08

Spline (S)	Qty(S)	Hub (O)	Length (L)	Length (L1)	Angle	Location	Type	Part #	Notes
31.75		57.15	75.44	38.10			U-Bolt HR	3.4.283	1.250 Bore & .312 Key
1.250		2.250	2.970	1.500					

Spicer Series: 1410 Suits:K5GB10R 30.16 x 106.35

Spline (S)	Qty(S)	Hub (O)	Length (L)	Length (L1)	Angle	Location	Type	Part #	Notes
31.75		57.15	93.47	52.58			U-Bolt HR	3.4.343	1.250 Bore & .312 Key
1.250		2.250	3.680	2.070					

Spicer Series: 1310 Suits:K5.13XR 26.99 x 81.76

Spline (S)	Qty(S)	Hub (O)	Length (L)	Length (L1)	Angle	Location	Type	Part #	Notes
22.23	13		109.73	38.10			Clamp FR	2.4.13103	Clamplock Type
0.875			4.320	1.500					
22.23	13	50.80	65.00	39.80			FR	2.4.3331	
0.875		2.000	2.560	1.570					
25.40	15		82.55	38.10			Clamp FR	2.4.13104	Clamplock Type
1.000			3.250	1.500					
25.40	15	53.59	58.67	26.92			FR	2.4.4921	
1.000		2.110	2.310	1.060					
31.75	14		82.55	38.10			FR Clamp	2.4.13106	Clamplock Type
1.250			3.250	1.500					
31.75	14	53.59	65.00	38.10			FR	2.4.1741	
1.250		2.110	2.560	1.500					
34.93	21		109.73	38.10			FR Clamp	2.4.13107	Clamplock Type
1.375			4.320	1.500					
38.10	17		109.73	38.10			FR Clamp	2.4.13132	Clamplock Type
1.500			4.320	1.500					

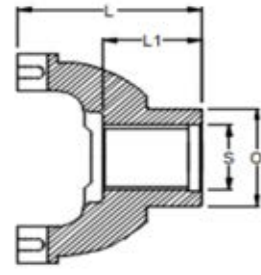
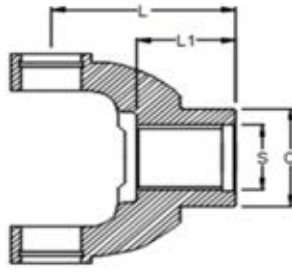
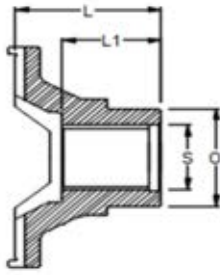
Spicer Series: 1350 Suits:5.178X 30.16 x 92.08

Spline (S)	Qty(S)	Hub (O)	Length (L)	Length (L1)	Angle	Location	Type	Part #	Notes
34.93	21		91.44	38.10			FR Clamp	3.4.13507	Clamplock Type
1.375			3.600	1.500					
38.01	23		112.20	38.10			FR Clamp	3.4.13543	Clamplock Type
1.500			4.410	1.500					

Spicer Series: 1710 Suits:5.280X 49.21 x 154.78

Spline (S)	Qty(S)	Hub (O)	Length (L)	Length (L1)	Angle	Location	Type	Part #	Notes
63.50	10	95.25					FR	6.4.6611	RT613-6613 RT910-915-9513 W/- Slinger Part# 6.4.6921X
2.500		3.750							
69.85	10	88.90					FR	6.4.4551	RT12 & RT14 Series W/- Slinger Part# 6.4.5251X
2.750		3.500							
69.85	10	95.25					FR	6.4.6821	14613-14615-14714-14 W/- Slinger Part# 6.4.6931X
2.750		3.750							

End Yoke



End Yoke

Spicer Series: 1810 Suits:5.281X 49.21 x 191.69

Spline (S)	Qty(S)	Hub (O)	Length (L)	Length (L1)	Angle	Location	Type	Part #	Notes
63.50 2.500	10	95.25 3.750					FR	6.5.4.3451	9 Series Fuller W/- Slinger Part# 6.5.4.3551X
63.50 2.500	10	82.55 3.250					FR	6.5.4.3711X	9 Series Fuller Comes with Slinger
69.85 2.750	10	95.25 3.750					FR	6.5.4.3491	15615-15613 W/- Slinger Part# 6.5.4.3561X
69.85 2.750	10	95.25 3.750					HR Strap	6.5.4.3491.1	16718B-16609-16613-16618-18718B and various other models W/- Slinger Part# 6.5.4.3561.1X
70.97 2.794	54						FR	6.5.4.4631	RT14-15-16-18-20 Series
70.97 2.794	54						HR Strap	6.5.4.4631.1	RT14-15-16-18-20 Series

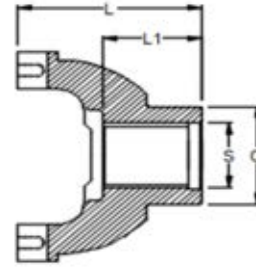
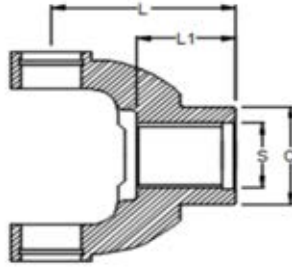
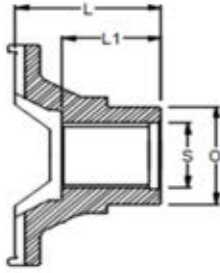
Spicer Series: 1810 Suits:5.281X 49.21 x 191.69

Spline (S)	Qty(S)	Hub (O)	Length (L)	Length (L1)	Angle	Location	Type	Part #	Notes
60.33 2.375	46						HR	6.5.4.3251	Transmission

Spicer Series: 1710 Suits:5.280X 49.21 x 154.78

Spline (S)	Qty(S)	Hub (O)	Length (L)	Length (L1)	Angle	Location	Type	Part #	Notes
45.47 1.790	34	66.68 2.625	160.27 6.310		45	FR Output	FR	6.4.6451	W/- Slinger Part# 6.4.8521X
45.47 1.790	34	66.68 2.625	137.92 5.430		25	FR Output	FR	6.4.6481	
51.41 2.024	39	66.68 2.625	133.35 5.250		33	FR Input	FR	6.4.5991	W/- Slinger Part# 6.4.6001X
51.41 2.024	39	66.68 2.625	156.21 6.150		45	RR Input	FR	6.4.6021X	
51.41 2.024	39	76.20 3.000	155.58 6.125		40	RR Input	Strap HR	6.4.8411.1	W/- Slinger Part# 6.4.8991.1X
51.41 2.024	39	76.20 3.000	133.35 5.250		30	RR Input	Strap HR	6.4.8421.1	W/- Slinger Part# 6.4.9031.1X
51.41 2.024	39	66.68 2.625	155.58 6.125		45	FR Output	HR Strap	6.4.8431.1	W/- Slinger Part# 6.4.9001.1X
51.41 2.024	39	66.68 2.625	133.35 5.250		30	FR Output	FR	6.4.8441	W/- Slinger Part# 6.4.9041X
54.43 2.143	41	74.63 2.938	168.28 6.625		38	FR Output	FR	6.4.7541	W/- Slinger Part# 6.4.7651X
54.43 2.143	41	74.63 2.938	155.70 6.130		42	RR Input	FR	6.4.7551	W/- Slinger Part# 6.4.7561X or 6.4.9181X
54.46 2.144	32	76.20 3.000	158.75 6.250		45	FR Output	FR	6.4.5791	Spicer J340-S J380-S W/- Slinger Part# 6.4.7171X

End Yoke



End Yoke

54.58 2.149	16	74.63 2.938	168.28 6.625	33	FR Output RR Input	FR	6.4.4591	Early Eaton DS.DP.DT 340 W/- Slinger Part# 6.4.5481X
54.58 2.149	16	74.63 2.938	131.78 5.188	25	FR Input	FR	6.4.4961	Early Eaton DS.DP.DT 340 W/- Slinger Part# 6.4.5061X
57.76 2.274	44	74.63 2.938	131.78 5.188	27	FR Input	FR	6.4.6031	Late Eaton DS.DP.DT 340-40-401-402-451 W/- Slinger Part# 6.4.6041X
57.76 2.274	44	76.20 3.000	131.78 5.188	30	FR Input	HR Strap	6.4.8451.1	Eaton 404-405-454 W/- Slinger Part# 6.4.8981.1X
61.52 2.422	18	85.73 3.375	147.60 5.811	26	FR Input	FR	6.4.4581	Eaton 44D DP DT 440-650 W/- Slinger Part# 6.4.4751X

Spicer Series: 1810 Suits:5.281X 49.21 x 191.69

Spline (S)	Qty(S)	Hub (O)	Length (L)	Length (L1)	Angle	Location	Type	Part #	Notes
57.76 2.274	44	76.20 3.000	133.35 5.250		30	FR Input	Strap HR	6.5.4.4311.1	Eaton 404-405-454 W/- Slinger Part# 6.5.4.4571.1X
57.76 2.274	44	74.63 2.938	133.35 5.250		30	FR Input	FR	6.5.4.4321	Late Eaton DS.DP.DT 340-40-401-402-451 W/- Slinger Part# 6.5.4.3281X or 6.5.4.4351X
57.76 2.274	44	74.63 2.938	133.35 5.250		30	FR Input	HR Strap	6.5.4.4321.1	Late Eaton DS.DP.DT 340-40-401-402-451 W/- Slinger Part# 6.5.4.3281.1X or 6.5.4.4351.1X
60.71 2.390	46	85.73 3.375	152.40 6.000		30	FR Input	FR	6.5.4.3911	Eaton DS.DP 461-651 W/- Slinger Part# 6.5.4.3921X
60.71 2.390	46	85.73 3.375	152.40 6.000		30	FR Input	HR Strap	6.5.4.3911.1X	Eaton DS.DP 461-651 W/- Slinger Part# 6.5.4.3921.1X

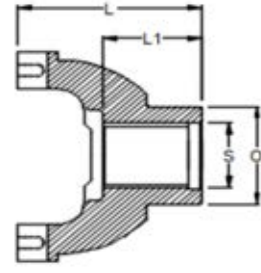
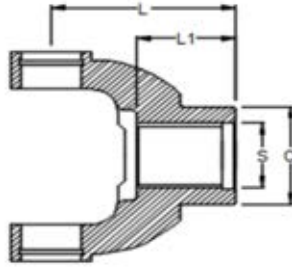
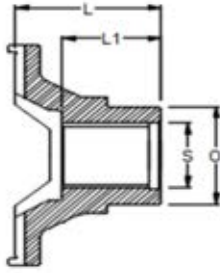
Spicer Series: 1610 Suits:5.279X 47.63 x 134.94

Spline (S)	Qty(S)	Hub (O)	Length (L)	Length (L1)	Angle	Location	Type	Part #	Notes
45.06 1.774	34	63.50 2.500	138.13 5.438		35	FR Output	FR	5.4.6261	W/- Slinger Part# 5.4.5081X

Spicer Series: 1710 Suits:5.280X 49.21 x 154.78

Spline (S)	Qty(S)	Hub (O)	Length (L)	Length (L1)	Angle	Location	Type	Part #	Notes
44.45 1.750	10	69.85 2.750	123.83 4.875		25	FR Output RR Input	FR	6.4.2381	
45.06 1.774	34	63.50 2.500	151.64 5.970		45	FR Output RR Input	FR	6.4.6321	SLHP-SQHP W/- Slinger Part# 6.4.5111X
45.06 1.774	34	63.50 2.500	123.83 4.875		22	FR Output	FR	6.4.6331	SP40-SL SQ100 RS120-230 W/- Slinger Part# 6.4.5131X
50.01 1.969	10	69.85 2.750	133.35 5.250		21	FR Output RR Input	FR	6.4.3221	SSHD Early W/- Slinger Part# 6.4.4361X
50.80 2.000	10	74.63 2.938	131.78 5.188		25	FR Input	FR	6.4.3241	SLHD-SQHD W/- Slinger Part# 6.4.4741X
51.41 2.024	39	69.85 2.750	165.10 6.500		35	FR Output RR Input	FR	6.4.5501	SSHD Late W/- Slinger Part# 6.4.6871X
51.41 2.024	39	69.85 2.750	133.35 5.250		33	FR Output RR Input	FR	6.4.5521	SSHD Late W/- Slinger Part# 6.4.6951X

End Yoke



End Yoke

51.41 2.024	39	76.20 3.000	158.75 6.250	43	FR Input RR Input	FR	6.4.6371	SP40-SL SQ100 Front Input RT140-145-RT380 Rear Output W/- Slinger Part# 6.4.6381X
51.41 2.024	39	76.20 3.000	130.81 5.150	33	FR Input RR Input FR Output	FR	6.4.6401	SP40-SL SQ100 Front Input RT145-160-180-185-380 Front Output RT145-240-RS380 Rear Input
57.15 2.250	10	76.20 3.000	153.92 6.060	24	FR Input	FR	6.4.1991	SSHD Early W/- Slinger Part# 6.4.4411X
60.33 2.375	46	82.55 3.250	144.53 5.690	22	FR Input	FR	6.4.5451	SSHD Late W/- Slinger Part# 6.4.5461X
60.33 2.375	46	82.55 3.250	136.91 5.390	29	FR Input RR Input	FR	6.4.7161	R145-160 Front Input RS:RT160 Rear Input W/- Slinger Part# 6.4.7181X
60.33 2.375	46	82.55 3.250	165.10 6.500	45	FR Input RR Input	FR	6.4.7761	W/- Slinger Part# 6.4.7771X
60.33 2.375	46	82.55 3.250	165.10 6.500	45	FR Input RR Input	HR Strap	6.4.7761.1	W/- Slinger Part# 6.4.7771.1X

Spicer Series: 1810 Suits:5.281X 49.21 x 191.69

Spline (S)	Qty(S)	Hub (O)	Length (L)	Length (L1)	Angle	Location	Type	Part #	Notes
2.753	43	3.750	1.792	5.409		FR Input	Strap	6.5.4.5131.1X	
51.41 2.024	39	76.20 3.000	131.78 5.188		30	FR Input RR Input FR Output	FR	6.5.4.3371	RT140 Front Input RT160-185 Front Output W/- Slinger Part# 6.5.4.3381X
51.41 2.024	39	76.20 3.000	131.78 5.188		30	FR Input FR Output	HR Strap	6.5.4.3371.1	W/- Slinger Part# 6.5.4.3381.1X
60.33 2.375	46	82.55 3.250	138.18 5.440		30	FR Input	FR	6.5.4.2701	W/- Slinger Part# 6.5.4.2711X
60.33 2.375	46	82.55 3.250	138.18 5.440		30	FR Input	HR Strap	6.5.4.2701.1	W/- Slinger Part# 6.5.4.2711.1X
60.33 2.375	46	82.55 3.250	144.53 5.690		30	FR Input RR Input	FR	6.5.4.3201	RT180-185-380 Front Input RS:RT180-185 Rear Input W/- Slinger Part# 6.5.4.3221X
60.33 2.375	46	82.55 3.250	131.06 5.160		30	FR Input RR Input	FR	6.5.4.3721	W/- Slinger Part# 6.5.4.3731X
60.33 2.375	46	82.55 3.250	131.06 5.160		30	FR Input RR Input	HR Strap	6.5.4.3721.1	W/- Slinger Part# 6.5.4.3731.1X

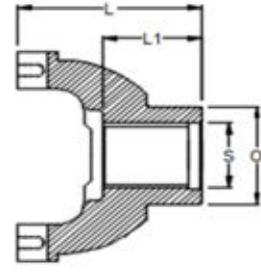
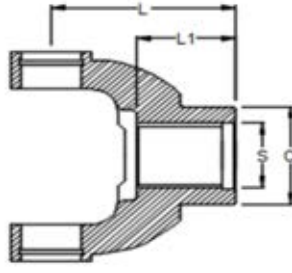
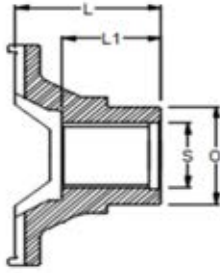
Spicer Series: 1810 Suits:5.281X 49.21 x 191.69

Spline (S)	Qty(S)	Hub (O)	Length (L)	Length (L1)	Angle	Location	Type	Part #	Notes
51.41 2.024	39		131.78 5.188		30	FR Output RR Input	FR	6.5.4.3261	
60.33 2.375	46	88.90 3.500	137.31 5.406		30	FR Input	FR	6.5.4.3251	34,000-80,000 LB Axles

Spicer Series: 1310 Suits:K5.13XR 26.99 x 81.76

Spline (S)	Qty(S)	Hub (O)	Length (L)	Length (L1)	Angle	Location	Type	Part #	Notes
0.750			88.50					2.4.PB	

End Yoke



End Yoke

Spicer Series: 1350 Suits:5.178X 30.16 x 92.08

Spline (S)	Qty(S)	Hub (O)	Length (L)	Length (L1)	Angle	Location	Type	Part #	Notes
			76.20					3.4.S.1350	
			3.000						
			76.20					3.4.SB.1350	

Spicer Series: 1410 Suits:K5GB10R 30.16 x 106.35

Spline (S)	Qty(S)	Hub (O)	Length (L)	Length (L1)	Angle	Location	Type	Part #	Notes
25.40			112.00					3.4.PB.1410	
1.000									

SPL Series: SPL170 Suits:SPL170X 55.00 x 164.00

Spline (S)	Qty(S)	Hub (O)	Length (L)	Length (L1)	Angle	Location	Type	Part #	Notes
2.544	49	3.820	6.040	2.682			HR	170.4.08444.1X	Inc. Slinger 5008437. Counter Bore Depth 0.240"

RPL Series: RPL25 Suits:CP25RPLS 52.35 x 208.28

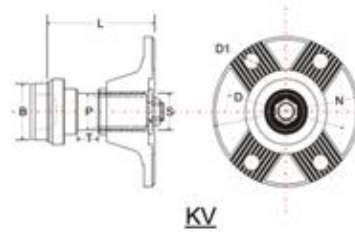
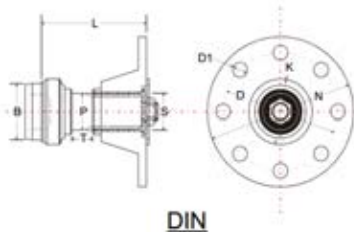
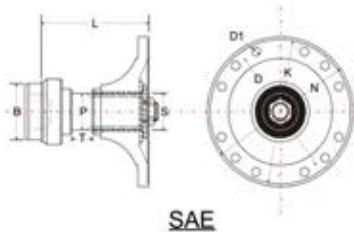
Spline (S)	Qty(S)	Hub (O)	Length (L)	Length (L1)	Angle	Location	Type	Part #	Notes
2.375	46	3.250	4.730	2.320				25RP.4.002	



DRIVE SERVICES AUSTRALIA

Midship Assembly

Midship Assembly



Spicer Series: 1310 Suits:K5.13XR 26.99 x 81.76

Tube Ø	Wall (T)	Butt (B)	Length (L)	Spline (S)	Qty (S)	Brg Ø (P)	Thread	Brg Part #	Part #	Notes
50.80	2.10	46.80		28.58						
2.000	0.083	1.842		1.125	26.00	30	1 18		2.8.1310.30X.1	Suits Falcon 30mm Centre Bearing
76.20	1.65	73.10	153.50			30	1 18		2.8.1310.30X	3x.065 Tube / CB57 / CB58
3.000	0.065	2.878	6.043							

Spicer Series: 1350 Suits:5.178X 30.16 x 92.08

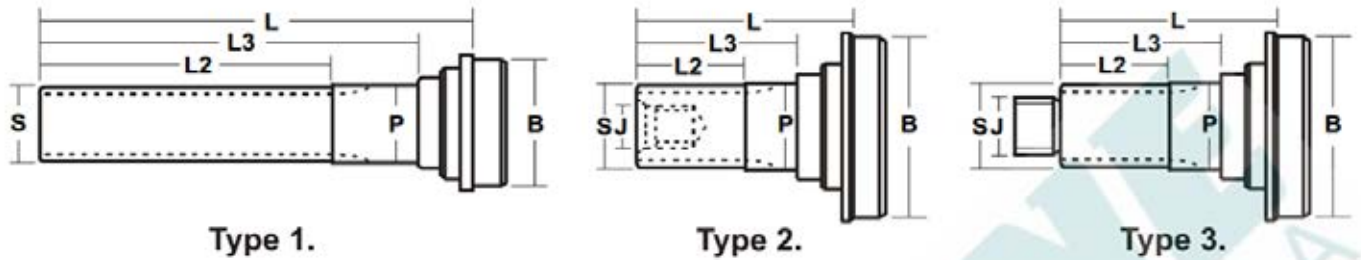
Tube Ø	Wall (T)	Butt (B)	Length (L)	Spline (S)	Qty (S)	Brg Ø (P)	Thread	Brg Part #	Part #	Notes
						35		CB114/17 3	3.8.882CVX	35mm Brg Suit CV882HD Plunging

Spicer Series: 1810 Suits:5.281X 49.21 x 191.69

Tube Ø	Wall (T)	Butt (B)	Length (L)	Spline (S)	Qty (S)	Brg Ø (P)	Thread	Brg Part #	Part #	Notes
4.500	0.259	3.990				60		A34MU33 6	8.8.2131.X	



Midship Stub



Type 1.

Type 2.

Type 3.

Spicer Series: 1300 Suits:K5L4R 26.99 x 74.61

Spline Ø	Qty	Tube Ø	Wall (T)	Butt (B)	(L)	(L2)	(L3)	(P)	(J)	(TP)	Type	Part #	Notes
34.93 1.375	10	76.20 3.000	1.65 0.065	73.10 2.878	76.20 3.000		45.00 1.772	45	M10	1	2	2.57.0901	Retainer K2.72.1300 Washer K2.72.1300A Bolt K2.73.1300
28.16 1.109	26	76.20 3.000	1.65 0.065	73.10 2.878	111.30 4.382		58.30 2.295		M10	1	2	2.57.0902	Retainer K2.72.1300 Washer K2.72.1300A Bolt K2.73.1300
25.40 1.000	23	76.20 3.000	1.65 0.065	73.10 2.878	87.30 3.437		57.30 2.256	30	M10	1	2	K2.57.1300	E.Yoke K2.4.1300 Retainer K2.72.1300 Washer K2.72.1300A Bolt K2.73.1300

Spicer Series: 1310 Suits:K5.13XR 26.99 x 81.76

Spline Ø	Qty	Tube Ø	Wall (T)	Butt (B)	(L)	(L2)	(L3)	(P)	(J)	(TP)	Type	Part #	Notes
1.125	26	50.80 2.000	2.11 0.083	46.78 1.842	90.00 3.543				0.625	18	3	2.53.1351	
34.93 1.375	16	50.80 2.000	2.11 0.083	46.78 1.842	203.20 8.000		176.60 6.950	35			1	2.53.511	Suits 2.3.5221KX / Dust Cap 20.0195
34.93 1.375	10	63.50 2.500	1.65 0.065	60.40 2.378	91.50 3.602		59.50 59.500	35	0.750	20	3	2.57.1441	C.Flge 2.1.2831 / E.Yoke 2.4.2671.1 Split Pin 2.72.001 / Washer 2.73.001 Nut 2.74.001
34.93 1.375	16	76.20 3.000	2.11 0.083	72.18 2.842	203.20 8.000		176.60 6.950	35			1	2.53.501	Suits 2.3.5221KX / Dust Cap 28.0195

Spicer Series: 1350 Suits:5.178X 30.16 x 92.08

Spline Ø	Qty	Tube Ø	Wall (T)	Butt (B)	(L)	(L2)	(L3)	(P)	(J)	(TP)	Type	Part #	Notes
34.93 1.375	16	63.50 2.500	2.11 0.083	59.48 2.342	205.60 8.094		171.40 6.748	35			1	3.53.1351	Suits 3.3.1501KX
38.10 1.500	16	76.20 3.000	2.11 0.083	72.18 2.842	179.30 7.059		150.70 5.933	40			1	3.53.1031	Suits 3.3.2041KX
34.93 1.375	16	76.20 3.000	2.11 0.083	72.18 2.842	178.60 7.031		151.50 5.965	35			1	3.53.1371	While Stocks Last
34.93 1.375	10	76.20 3.000	2.11 0.083	72.18 2.842	101.60 4.000		67.30 2.650	35	1.000	20	3	3.54.611	1310 E.Yoke 2.4.2671 1350 E.Yoke 3.4.2171 Nut 16.74.101
38.10 1.500	10	76.20 3.000	2.41 0.095	71.58 2.818	105.50 4.154		75.50 2.972	40	1.000	20	3	3.57.2641	1410 C.Flange 3.1.6221 1480-1550 C. Flange K4.1.A2191 Washer 98.216 / Nut 16.74.81
39.62 1.560	16	88.90 3.500	2.11 0.083	84.88 3.342	217.00 8.543		190.30 7.492	40			1	3.53.451	Suits 3.3.1601KX
38.10 1.500	10	88.90 3.500	2.41 0.095	84.28 3.318	103.50 4.075		75.50 2.972	40	1.000	20	3	3.57.2651	1410 C.Flange 3.1.6221 1480-1550 C. Flange K4.1.A2191 Washer 98.216 / Nut 16.74.81

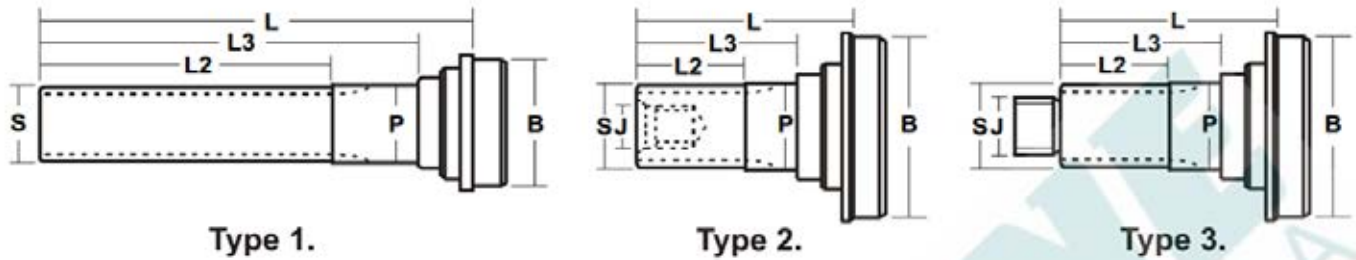
Spicer Series: 1550 Suits:5.155X 34.93 x 126.20

Spline Ø	Qty	Tube Ø	Wall (T)	Butt (B)	(L)	(L2)	(L3)	(P)	(J)	(TP)	Type	Part #	Notes
44.45 1.750	16	88.90 3.500	2.41 0.095	84.28 3.318	217.40 8.559		190.00 7.480	45			1	4.53.61	Suits 4.3.1241KX Dust Cap D4K

Spicer Series: 1610 Suits:5.279X 47.63 x 134.94

Spline Ø	Qty	Tube Ø	Wall (T)	Butt (B)	(L)	(L2)	(L3)	(P)	(J)	(TP)	Type	Part #	Notes
44.45 1.750	10	88.90 3.500	3.40 0.134	82.30 3.240	110.20 4.339		81.00 3.189	45	1.250	18	3	5.53.141	E.Yoke 5.4.1721 Washer 230123.6 Nut 231502

Midship Stub



Type 1.

Type 2.

Type 3.

Spicer Series: 1710 Suits:5.280X 49.21 x 154.78

Spline Ø	Qty	Tube Ø	Wall (T)	Butt (B)	(L)	(L2)	(L3)	(P)	(J)	(TP)	Type	Part #	Notes
49.53 1.950	10	88.90 3.500	3.96 0.156	81.18 3.196	131.10 5.161		103.20 4.063	50	1.250	18	3	6.53.151	E.Yoke 6.4.1981 Washer 230123.6 Nut 231502
49.53 1.950	10	103.89 4.090	4.57 0.180	94.95 3.738	131.10 5.161		103.20 4.063	50	1.250	18	3	6.53.201	E.Yoke 6.4.1981 Washer 230123.6 Nut 231502
59.50 2.340	16	103.89 4.090	4.57 0.180	94.95 3.738	134.90 5.311		101.60 4.000	60	1.250	18	3	6.53.311	1710 E.Yoke 6.4.4601 1810 E.Yoke 6.5.4.1891 Washer 230123.6 / Nut 231502
57.15 2.250	10	110.00 4.331	6.00 0.236	98.20 3.867	131.20 5.165		88.50 3.484	60	M27	2	3	6.53.571	Suits C.Bearing CB94 For Franna Crane Washer 6.73.571 Nut 6 74 571

Spicer Series: 1760 Suits:5.407X 49.21 x 177.80

Spline Ø	Qty	Tube Ø	Wall (T)	Butt (B)	(L)	(L2)	(L3)	(P)	(J)	(TP)	Type	Part #	Notes
59.70 2.359	46	103.89 4.090	4.57 0.180	94.95 3.738	134.90 5.311		101.60 4.000	60	1.250	18	3	6.3.53.21	E.Yoke 6.4.7481.1 Washer 230123.6 Nut 231502

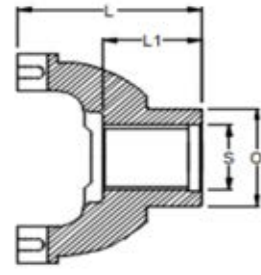
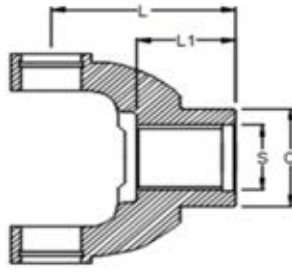
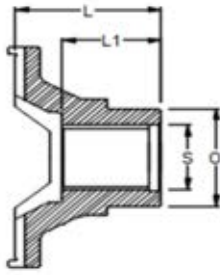
Spicer Series: 1810 Suits:5.281X 49.21 x 191.69

Spline Ø	Qty	Tube Ø	Wall (T)	Butt (B)	(L)	(L2)	(L3)	(P)	(J)	(TP)	Type	Part #	Notes
57.15 2.250	10	114.30 4.500	6.58 0.259	101.34 3.990	134.10 5.280		95.25 3.750	60	1.250	18	3	8.53.41	E.Yoke 6.5.4.2131 Mack Bearing A34MU336 Washer 230123.6 / Nut 231502
59.70 2.359	46	116.59 4.590	4.57 0.180	107.65 4.238	134.90 5.311		101.60 4.000	60	1.250	18	3	6.5.53.171	Washer 230123.6 Nut 231502
59.50 2.340	16	116.59 4.590	4.57 0.180	107.65 4.238	134.90 5.311		101.60 4.000	60	1.250	18	3	6.5.53.91	E.Yoke 6.5.4.1891 Washer 230123.6 Nut 231502

SPL Series: SPL250 Suits:SPL250X 60.00 x 163.00

Spline Ø	Qty	Tube Ø	Wall (T)	Butt (B)	(L)	(L2)	(L3)	(P)	(J)	(TP)	Type	Part #	Notes
59.70 2.375	46	130.00 5.118	5.00 0.197	120.20 4.732	162.00 6.378		98.60 3.882	60	M30	2	3	250.53.11	Suits 132 X 6mm Tube Washer 230123.6 Nut 250.74.11

Midship End Yoke



Midship End Yoke

Spicer Series: 1300 Suits:K5L4R 26.99 x 74.61

Spline (S)	Qty(S)	Length (L)	Length (L1)	Type	Part #	Notes
25.40 1.000	26				K2.4.1300	

Spicer Series: 1310 Suits:K5.13XR 26.99 x 81.76

Spline (S)	Qty(S)	Length (L)	Length (L1)	Type	Part #	Notes
34.93 1.375	10	62.99 2.480	30.18 1.188	FR	2.4.0901	2.57.0901
34.93 1.375	10	81.76 3.219	44.45 1.750	Strap HR	2.4.2671.1	2.57.1441 (2.5x.065)

Spicer Series: 1350 Suits:5.178X 30.16 x 92.08

Spline (S)	Qty(S)	Length (L)	Length (L1)	Type	Part #	Notes
34.93 1.375	10	83.34 3.281	47.52 1.871	HR Strap	3.4.178.1X	3.54.611 (3x.083)

Spicer Series: 1410 Suits:K5GB10R 30.16 x 106.35

Spline (S)	Qty(S)	Length (L)	Length (L1)	Type	Part #	Notes
38.10 1.500	10	94.46 3.719	50.80 2.000	HR Strap	3.4.6561	3.57.2641 (3x.095), 3.57.2651 (3.5x.095) 3.70.28X

Spicer Series: 1480 Suits:5.188X 34.93 x 106.38

Spline (S)	Qty(S)	Length (L)	Length (L1)	Type	Part #	Notes
38.10 1.500	10	102.39 4.031	50.80 2.000	HR Strap	3.4.3091.1	3.57.2641 (3x.095), 3.57.2651 (3.5x.095)

Spicer Series: 1550 Suits:5.155X 34.93 x 126.20

Spline (S)	Qty(S)	Length (L)	Length (L1)	Type	Part #	Notes
38.10 1.500	10	95.89 3.775	50.80 2.000	HR U-Bolt	4.4.2051	3.57.2641 (3x.095), 3.57.2651 (3.5x.095)

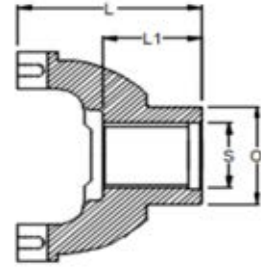
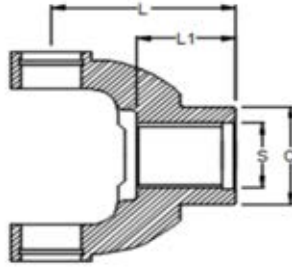
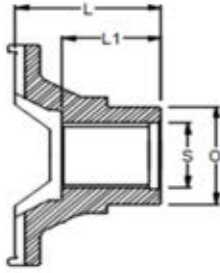
Spicer Series: 1610 Suits:5.279X 47.63 x 134.94

Spline (S)	Qty(S)	Length (L)	Length (L1)	Type	Part #	Notes
44.45 1.750	10	104.78 4.125	57.15 2.250	FR	5.4.1721	5.53.141 (3.5x.134)
44.45 1.750	10	104.78 4.125	57.15 2.250	HR Strap	5.4.1721.1	5.53.141 (3.5x.134)

Spicer Series: 1710 Suits:5.280X 49.21 x 154.78

Spline (S)	Qty(S)	Length (L)	Length (L1)	Type	Part #	Notes
49.78 1.960	10	127.00 5.000	76.20 3.000	FR	6.4.1981	6.53.201 (4.09x.180)
49.78 1.960	10	127.00 5.000	76.20 3.000	HR Strap	6.4.1981.1	6.53.201 (4.09x.180)
49.98 1.968	38	127.00 5.000	76.20 3.000	FR	6.4.7141	6.53.411 (4.09x.180)
49.98 1.968	38	127.00 5.000	76.20 3.000	HR Strap	6.4.7141.1	6.53.411 (4.09x.180)

Midship End Yoke



Midship End Yoke

59.53 2.344	16	125.43 4.938	69.85 2.750	FR	6.4.4601	6.53.311 (4.09x.180)
59.53 2.344	16	125.43 4.938	69.85 2.750	HR Strap	6.4.4601.1	6.53.311 (4.09x.180)
60.70 2.390	46	125.43 4.938	69.85 2.750	HR Strap	6.4.7481.1	6.3.53.21 (4.09x.180)

Spicer Series: 1760 Suits:5.407X 49.21 x 177.80

Spline (S)	Qty(S)	Length (L)	Length (L1)	Type	Part #	Notes
59.53 2.344	16	139.70 5.500	59.85 2.750	FR	6.3.4.161	6.53.311 (4.09x.180)

Spicer Series: 1810 Suits:5.281X 49.21 x 191.69

Spline (S)	Qty(S)	Length (L)	Length (L1)	Type	Part #	Notes
59.53 2.344	16	139.70 5.500	69.85 2.750	FR	6.5.4.1891	6.5.53.91 (4.59x.180)
59.54 2.344	16	139.70 5.500	69.85 2.750	HR Strap	6.5.4.1891.1	6.5.53.91 (4.59x.180)
60.70 2.390	46	139.70 5.500	69.85 2.750	HR Strap	6.5.4.3591.1	6.5.53.171 (4.59x.180) 210661.1X or 210875.1X NUT 231502 WASHER 230123.6

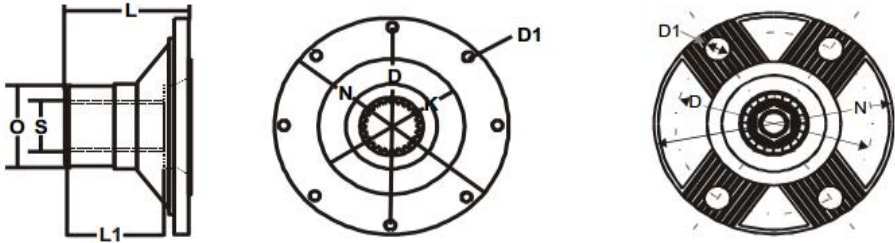
SPL Series: SPL250 Suits:SPL250X 60.00 x 163.00

Spline (S)	Qty(S)	Length (L)	Length (L1)	Type	Part #	Notes
60.70 2.390	46	146.05 5.750	69.85 2.750	HR Strap	250.4.21.1	250.53.11 (132X6)

RPL Series: RPL25 Suits:CP25RPLS 52.35 x 208.28

Spline (S)	Qty(S)	Length (L)	Length (L1)	Type	Part #	Notes
60.70 2.390	46	124.46 4.900	69.85 2.750	Strap HR	25RP.4.001	6.5.53.171 (4.59x.180) 210661.1X or 210875.1X NUT 231502 WASHER 230123.6

Midship Companion Flange



Midship Companion Flange

Spicer Series: 1310 Suits:K5.13XR 26.99 x 81.76

Bore (S)	Qty (S)	OD (N)	Spigot (K)	PCD (D)	Hole (D1)	Qty (D1)	(D2)	(D3)	FC (L)	DTH (L1)	Hub (O)	Part #	Notes
34.93	10	97.00	60.33	79.38	9.52	4	51.00	60.70	60.70	36.60		2.1.2831	Suits 2.57.1441
34.93	10	126.00	45.00						55.60	36.60		2.1.2831SF	Blank Face & suits 2.57.1441
34.93	10	126.00	79.38	107.95	11.12	4	76.20	76.20	55.60	36.60		2.1.7333	Saginaw Face suit 2.57.1441

Spicer Series: 1350 Suits:5.178X 30.16 x 92.08

Bore (S)	Qty (S)	OD (N)	Spigot (K)	PCD (D)	Hole (D1)	Qty (D1)	(D2)	(D3)	FC (L)	DTH (L1)	Hub (O)	Part #	Notes
38.10	10	116.00	69.85	95.25	11.12	4	58.80	80.90	59.05	45.00		3.1.014	Suits 3.57.2641 & 3.57.2651
38.10	10	120.00	70.00	100.00	12.20	4	64.30	76.60	68.30	50.80		3.1.352	Suits 3.57.2641 & 3.57.2651
38.10	10	117.70	69.85	95.25	11.12	4	61.20	72.90	68.30	50.80		3.1.6221	Suits 3.57.2641 & 3.57.2651
44.45	10	148.00	80.00	100.00	12.20	4	55.00	95.30	69.00	58.00		3.1.013	Suits 5.53.141

Spicer Series: 1550 Suits:5.155X 34.93 x 126.20

Bore (S)	Qty (S)	OD (N)	Spigot (K)	PCD (D)	Hole (D1)	Qty (D1)	(D2)	(D3)	FC (L)	DTH (L1)	Hub (O)	Part #	Notes
44.45	10	175.00	168.20	155.57	9.52	8			79.60	57.00		K5.1.A0741	Suits 5.53.141

Spicer Series: 1500 Suits:K5GB15R 39.70 x 115.90

Bore (S)	Qty (S)	OD (N)	Spigot (K)	PCD (D)	Hole (D1)	Qty (D1)	(D2)	(D3)	FC (L)	DTH (L1)	Hub (O)	Part #	Notes
38.10	10	146.00	95.25	120.65	12.70	4	77.50	92.40	68.30	50.80		K4.1.A2191	Suits 3.57.2641 & 3.57.2651
44.45	10	146.00	95.25	120.65	12.70	4	77.50	92.40	76.20	57.00		K4.1.A0761	Suits 5.53.111 & 5.53.141

Spicer Series: 1610 Suits:5.279X 47.63 x 134.94

Bore (S)	Qty (S)	OD (N)	Spigot (K)	PCD (D)	Hole (D1)	Qty (D1)	(D2)	(D3)	FC (L)	DTH (L1)	Hub (O)	Part #	Notes
44.45	10	150.00	90.00	130.00	12.20	8			70.00	66.20	57	5.1.150812	Suits 5.53.141 / 150 DIN Flange Bolt Pattern
44.45	10	150.00	90.00	130.00	12.20	8			66.00	57.00		5.1.150812	Suits 5.53.141

Spicer Series: 1810 Suits:5.281X 49.21 x 191.69

Bore (S)	Qty (S)	OD (N)	Spigot (K)	PCD (D)	Hole (D1)	Qty (D1)	(D2)	(D3)	FC (L)	DTH (L1)	Hub (O)	Part #	Notes
59.53	16	203.20	196.85	184.15	11.12	12			87.30	69.85		6.5.1.1811	Suits 6.53.311 & 6.5.53.91

Midship Small Parts

Midship Small Parts

Spicer Series: 1300 Suits:K5L4R 26.99 x 74.61

Thread (JxPW)	Part #	Notes
	K2.73.1300	
10 1	K2.72.1300	Retainer
10 1	K2.72.1300A	Washer
10 1	K2.73.1300	Bolt

Spicer Series: 1310 Suits:K5.13XR 26.99 x 81.76

Thread (JxPW)	Part #	Notes
	230121	35mm Reverse Slip Midship Lock Collar
0.625	2.74.1351	BOM Part Only 2.8.1310.30X.1
.750 20	2.72.001	Split Pin
.750 20	2.73.001	Washer
.750 20	2.74.001	Castellated Nut

Spicer Series: 1480 Suits:5.188X 34.93 x 106.38

Thread (JxPW)	Part #	Notes
1.000 20	16.73.216	Washer
1.000 20	16.74.101	Self Lock Nut Flanged
1.000 20	16.74.81	Castellated Nut

Spicer Series: 1710 Suits:5.280X 49.21 x 154.78

Thread (JxPW)	Part #	Notes
	6.74.571	
31.75 18	6.74.001	Castleated

Spicer Series: 1810 Suits:5.281X 49.21 x 191.69

Thread (JxPW)	Part #	Notes
1.250 18	20.74.91	Self Lock Nut Flanged - Large
1.250 18	230123.6	Washer

Midship Small Parts

Midship Small Parts

1.250 18 231502 Self Lock Nut Flanged

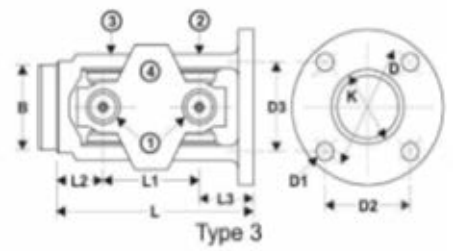
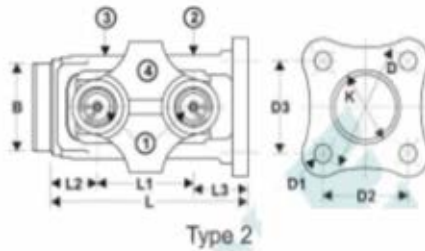
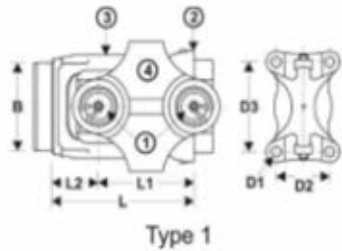
SPL Series: SPL250 Suits:SPL250X 60.00 x 163.00

Thread (JxPW)		Part #	Notes
30	2	250.74.11	Self Lock Nut Flanged



DRIVELINE
SERVICES AUSTRALIA

Double Cardan



Double Cardan

Spicer Series: 1310 Suits:K5.13XR 26.99 x 81.76

Universal Joint	Centre 'H' Yoke	Flange Yoke	Weld Yoke	Centering	Part #	Application
5.433.1X	2.26.507	SCV82	2.28.1777X		800R1310.1	Ford Jeep CV
				687.20.12758/59	800R1310.1410	Iveco/1410
5.433.1X	2.26.507	SCV82	2.28.1747X		800R1310.2	Ford Jeep CV
5.433.1X	2.26.507	211229X	2.28.1777X		800R1310.3	Ssangyong Musso
K5.13XR				687.20.12758/59	800R1310.4	1310 Face
5.433.1X				687.20.12758/59	800R1310.5	Discovery
K5.13XR				687.20.12758/59	800R1310.6	Mitsubishi
				687.20.12758/59	800R1310.6.1410	Iveco/1410
K5.13XR				687.20.12758/59	800R1310.7	Prado
K5.13XR				687.20.12758/59	800R1310.9	Hilux

Spicer Series: 1330 Suits:RUJ3002 26.99 x 92.08

Universal Joint	Centre 'H' Yoke	Flange Yoke	Weld Yoke	Centering	Part #	Application
RUJ3002.1A	2.26.527	SCV79	2.28.2137X		800R1330.1	Ford CV

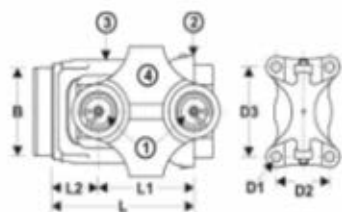
Spicer Series: 1350 Suits:5.178X 30.16 x 92.08

Universal Joint	Centre 'H' Yoke	Flange Yoke	Weld Yoke	Centering	Part #	Application
5.178X.1A	3.26.757	3.83.024X	3.28.1747.1X		800R1350.1	Ford
5.178X.1A	3.26.757	3.83.024X	3.28.3281X		800R1350.2	Saginaw
5.178X					800R1350.IS	Isuzu

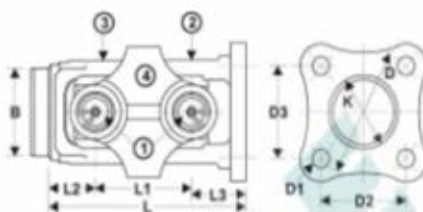
Spicer Series: 1410 Suits:K5GB10R 30.16 x 106.35

Universal Joint	Centre 'H' Yoke	Flange Yoke	Weld Yoke	Centering	Part #	Application
					800R1410.1	

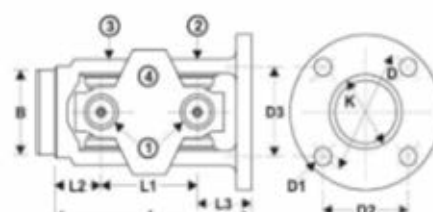
Double Cardan Dimensional



Type 1



Type 2



Type 3

Spicer **Series: 1300** **Suits:K5L4R** **26.99 x 74.61**

Tube Ø	Wall	Butt (B)	Lth (L1)	Lth (L2)	Lth (L3)	PCD (D)	Ø (D1)	Qty	(D2) Bolt Pattern (D3)	Spgt (K)	Type (K)	Part #	Notes
SCV82ANG													CV Repair Ball Kit Non Geasable. Suit 1300 Series Discovery

Spicer **Series: 1310** **Suits:K5.13XR** **26.99 x 81.76**

Tube Ø	Wall	Butt (B)	Lth (L1)	Lth (L2)	Lth (L3)	PCD (D)	Ø (D1)	Qty	(D2) Bolt Pattern (D3)	Spgt (K)	Type (K)	Part #	Notes
			68.30					-				2.26.507	Centre Yoke
			2.689										
						7.92		4	38.10	59.44		SCV82	CV Yoke Repair Kit Inc Ball
						0.312			1.500	2.340			
												SCV82NG	CV Yoke Inc Ball Kit UNF Threaed Holes Non Geasable
					73.91	86.00	7.92				100.00		
					2.910	3.386	0.312	6			3.937	2.83.206	100mm CV Adaptor Bolts to SCV82
					73.90	88.90	8.00	4	60.00	68.00	46.00	2.83.288	Hilux Adaptor Flange; Bolts to SCV82
					2.910	3.500	0.315		2.362	2.677	1.811		
					41.10	88.90	12.50	4	62.87	62.87	50.80	211229X	Ball F/yoke Musso
					1.618	3.500	0.492		2.475	2.475	2.000		
					49.20	94.74	10.49	4	67.00	67.00	65.00	2.21.3191	Ball F/yoke Discovery
					1.937	3.730	0.413		2.638	2.638	2.559		
					60.50	107.95	11.51	4	76.20	76.20	79.38	2.83.188.1X	Saginaw Adaptor Bolts to SCV82
					2.382	4.250	0.453		3.000	3.000	3.125		
31.75	3.05	25.85		36.60								2.28.1797X	Weld Pin Yoke Suit 1.25x0.120"
1.250	0.120	1.018		1.441									
50.80	3.05	44.90		36.60								2.28.1777X	Weld Pin Yoke Suit 2.000x0.120"
2.000	0.120	1.768		1.441									
63.50	2.11	59.48		36.60								2.28.1747X	Weld Pin Yoke Suit 2.500x0.083"
2.500	0.083	2.342		1.441									

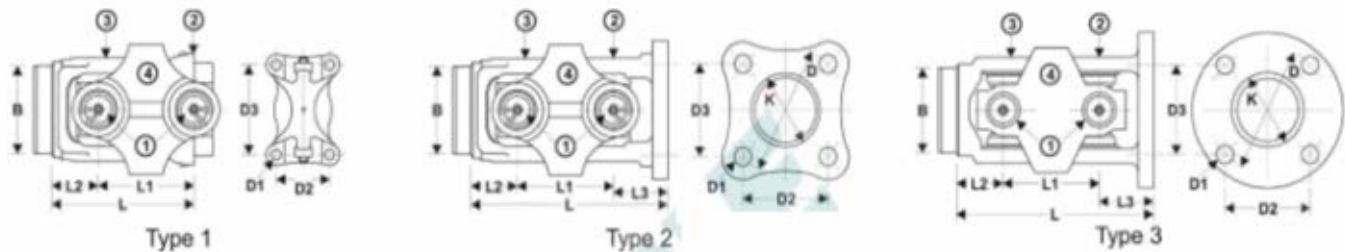
Spicer **Series: 1330** **Suits:RUJ3002 26.99 x 92.08**

Tube Ø	Wall	Butt (B)	Lth (L1)	Lth (L2)	Lth (L3)	PCD (D)	Ø (D1)	Qty	(D2) Bolt Pattern (D3)	Spgt (K)	Type (K)	Part #	Notes
			69.85										
			2.750									2.26.527	Centre Yoke
							7.92	4	38.10	73.03		SCV79	CV Yoke Inc Ball Kit; UNF Threaded Holes
							0.312		1.500	2.875			
												SCV82A	CV Repair Ball Kit
63.50	2.11	59.48		35.10								2.28.2137X	Weld Pin Yoke Suit 2.500x0.083
2.500	0.083	2.342		1.382									

Spicer **Series: 1350** **Suits:5.178X 30.16 x 92.08**

Tube Ø	Wall	Butt (B)	Lth (L1)	Lth (L2)	Lth (L3)	PCD (D)	Ø (D1)	Qty	(D2)	Bolt Pattern (D3)	Spgt (K)	Type (K)	Part #	Notes
			73.03											
			2.875										3.26.757	Centre Yoke

Double Cardan Dimensional Data

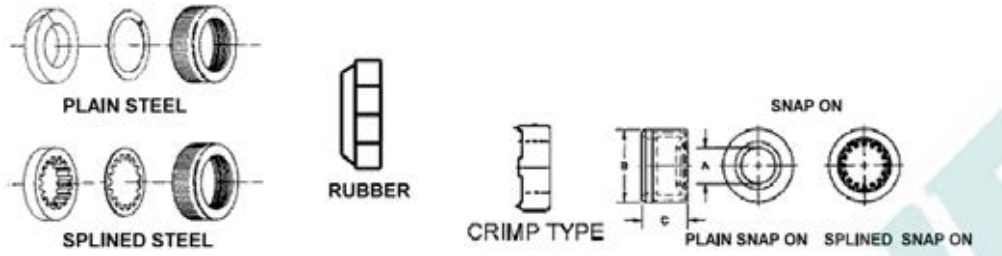


SCV82ANG										CV Repair Ball Kit Non Geasable
41.28	107.95	12.00	4	76.20	76.20	50.80	F	3.83.024X		F/yoke Inc Ball Kit Ford M12x1.75 Holes
1.625	4.250	0.472		3.000	3.000	2.000				
41.28	107.95	12.00	4	76.20	76.20	68.00		3.83.025X		F/yoke Inc Ball Kit Dodge Ram
1.625	4.250	0.472		3.000	3.000	2.677				
41.28	107.95	11.13	4	76.20	76.20	79.38		3.83.3281X		Ball F/yoke Saginaw
1.625	4.250	0.438		3.000	3.000	3.125				
63.50	2.41	58.88		36.50				3.28.3281X		Weld Pin Yoke Suit 2.500x0.095
2.500	0.095	2.318								
69.85	2.11	65.83		45.90				3.28.1747.1X		Weld Pin Yoke Suit 2.75x.083"
2.750	0.083	2.592								
76.20	2.11	72.18		45.90				3.28.1327.1X		Weld Pin Yoke Suit 3x.083"
3.000	0.083	2.842								



DRIVEWELL AUSTRALIA
SERVICES

Dust Cap



Dust Cap

Spicer Series: 1140 Suits:K5LGB80R 23.80 x 61.20

Spline (S)	Qty (S)	Splined	Type	Compound	Part #	Notes
	4.00	No	Crimp	Steel	10.14.29	Suits Steering Shafts
26.92 1.060	16.00	Yes	Crimp	Steel	D1A	
26.92 1.060	16.00	No	Crimp	Steel	D1B	
26.92 1.060	16.00	No	Screw	Steel	DCK14A	

Spicer Series: 1310 Suits:K5.13XR 26.99 x 81.76

Spline (S)	Qty (S)	Splined	Type	Compound	Part #	Notes
31.75 1.250	16.00	No	Crimp	Steel	D2K	
34.93 1.375	16.00	No	Snap On	Rubber	28.0194	One Piece - Non Greasable
34.93 1.375	16.00	No	Snap On	Rubber	28.0194.1	One Piece - Greasable
34.93 1.375	16.00	Yes	Snap On	Rubber	28.0195	One Piece
34.93 1.375	16.00	No	Screw	Rubber	D2C	
34.93 1.375	16.00	Yes	Screw	Steel	D3E	Slip Yoke Thread - Ø 1.660" Also Suits 1350 Series

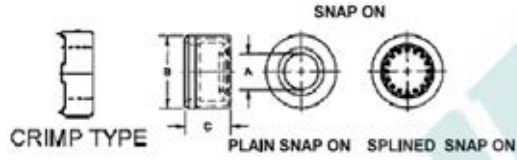
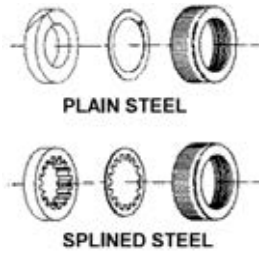
Spicer Series: 1350 Suits:5.178X 30.16 x 92.08

Spline (S)	Qty (S)	Splined	Type	Compound	Part #	Notes
34.93 1.375	16.00	Yes	Screw	Steel	D3G	Slip Yoke Thread Ø 1.78" Also Suits 1410 Series
38.10 1.500	16.00	No	Screw	Steel	D3A	Also Suits 1410 Series

Spicer Series: 1410 Suits:K5GB10R 30.16 x 106.35

Spline (S)	Qty (S)	Splined	Type	Compound	Part #	Notes
1.500	16.00				3.16.1410	1410 Rubber Seal Only
38.10 1.500	16.00	No	Screw	Steel	D3F	
38.10 1.500	16.00	Yes	Screw	Steel	D3K	
39.62 1.560	16.00	No	Screw	Rubber	D3H	Also Suits 1480 Series

Dust Cap



Dust Cap

Spicer Series: 1480 Suits:5.188X 34.93 x 106.38

Spline (S)	Qty (S)	Splined	Type	Compound	Part #	Notes
39.62 1.560	16.00	Yes	Screw	Steel	D3J	

Spicer Series: 1550 Suits:5.155X 34.93 x 126.20

Spline (S)	Qty (S)	Splined	Type	Compound	Part #	Notes
1.750	16.00	Yes	Screw	Steel	D4K	
		No	Screw	Steel	DCK61A	
44.45 1.750	16.00	No	Screw	Steel	D4J	
67.80 2.670	18.00	No	Screw	Steel	D4L	Close Couple Use

Spicer Series: 1500 Suits:K5GB15R 39.70 x 115.90

Spline (S)	Qty (S)	Splined	Type	Compound	Part #	Notes
44.45 1.750	16.00	No	Screw	Steel	D4A	
44.45 1.750	16.00	No	Screw	Steel	DCK51A	

Spicer Series: 1650 Suits:5.165X 41.28 x 142.00

Spline (S)	Qty (S)	Splined	Type	Compound	Part #	Notes
50.80 2.000	16.00	No	Screw	Steel	D5E	

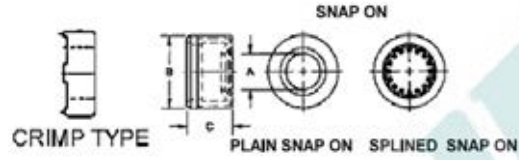
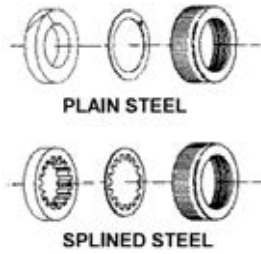
Spicer Series: 1610 Suits:5.279X 47.63 x 134.94

Spline (S)	Qty (S)	Splined	Type	Compound	Part #	Notes
50.80 2.000	16.00	No	Screw	Rubber	5.86.68	
50.80 2.000	16.00	Yes	Crimp	Steel	D5G	
68.30 2.690	18.00	No	Screw	Steel	D5C	Close Coupled Use

Spicer Series: 1710 Suits:5.280X 49.21 x 154.78

Spline (S)	Qty (S)	Splined	Type	Compound	Part #	Notes
63.50 2.500	16.00	No	Screw	Rubber	6.3.86.18	
63.50 2.500	10.00	No	Screw	Steel	D6A	
63.50 2.500	16.00	Yes	Crimp	Steel	D6G	
82.55 3.250	18.00	Yes	Screw	Steel	D6E	Also Suits 1810 Series

Dust Cap



Dust Cap

Spicer **Series: 1810** **Suits:5.281X 49.21 x 191.69**

Spline (S)	Qty (S)	Splined	Type	Compound	Part #	Notes
76.20 3.000	16.00	No	Screw	Rubber	6.5.86.38	

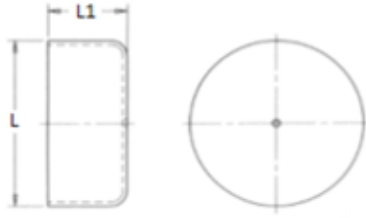
Spicer **Series: 1880** **Suits:5.308X 55.55 x 205.59**

Spline (S)	Qty (S)	Splined	Type	Compound	Part #	Notes
76.20 3.000	16.00	No	Screw	Steel	D9A	



DRIVELINE
SERVICES AUSTRALIA

Welch Plug



Welch Plug

Spicer Series: 1610 Suits:5.279X 47.63 x 134.94

Length (L)	Length (L1)	Part #	Notes
55.88	11.20	5.68.54	Steel - Suits Neapco
2.200	0.441		

Spicer Series: 1710 Suits:5.280X 49.21 x 154.78

Length (L)	Length (L1)	Part #	Notes
66.80	6.35	6.68.13	Steel Dished
2.630	0.250		
69.85	13.46	6.68.51	Steel - Suits Neapco
2.750	0.530		
71.63	20.32	6.68.64	Plastic (6.3.2651KX)
2.820	0.800		
69.85	31.75	6.68.71	Steel - Suits Neapco
2.750	1.250		
71.63	38.10	6.68.74	Plastic (6.3.2671KX)
2.820	1.500		

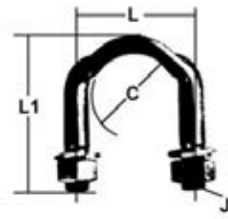
Spicer Series: 1760 Suits:5.407X 49.21 x 177.80

Length (L)	Length (L1)	Part #	Notes
69.85	27.69	6.3.68.14	Steel - Suits Neapco
2.750	1.090		

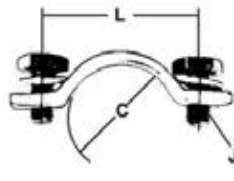
Spicer Series: 1810 Suits:5.281X 49.21 x 191.69

Length (L)	Length (L1)	Part #	Notes
84.33	21.59	6.5.68.64	Plastic
3.320	0.850		
84.33	38.86	6.5.68.74	Plastic
3.320	1.530		
82.55	15.88	8.68.13	Steel - Suits Neapco
3.250	0.625		

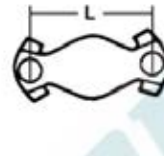
U-bolts



Type 1.



Type 2.



Type 3.

U-bolts

28.58 1.125	40.48 1.594	46.22 1.820	.312	24	1	2	105	1310 / Ford 9"
26.99 1.063	40.38 1.590		.312	24	2	2	107	1310 / 1330
26.99 1.063	35.81 1.410	43.68 1.720	.312	24	1	2	2.94.28X	1310 / 1330
30.15 1.187	46.00 1.811		.312	24	2	2	3.70.28X	1350 / 1410
30.15 1.187	42.16 1.660		.312	24	2	2	3.70.28X.GM	1350 / Fits 3.4.0880.1X & 3.4.0882.1X Only
30.15 1.187	42.16 1.660	50.80 2.000	.375	24	1	2	3.94.18X	1350 / 1410
34.93 1.375	53.84 2.120		.375	24	2	2	3.70.38X	1480 / 1550
34.93 1.375	48.51 1.910	57.90 2.280	.437	20	1	2	3.94.28X	1480 / 1550
41.27 1.625	60.30 2.375		.500	20	2	2	5.70.18X	1650
47.63 1.875	63.50 2.500		.375	24	2	2	5.70.28X	1610
	59.43 2.340				3	1	98.741	1610
	61.97 2.440				3	1	230323	1710 / 1810
49.20 1.937	71.42 2.812		.500	20	2	2	6.5.70.18X	1710 / 1810
	71.43 2.812				3	1	231009	1880
			M8	1		2	211941X	SPL140 / SPL170 / SPL250 Cap Retainer
55.00 2.165	81.28 3.200		M12	1.25	2	2	170.70.18X	SPL170
60.00 2.362	86.36 3.400		M12	1.25	2	2	250.70.18X	SPL250

Weight



Weight

Spicer **Series: SPICER** **Suits: x**

Weight (g)	Length (L)	Length (L1)	Part #	Notes
4.00			DLW.04	
5.00			DLW.05	
8.00			DLW.08	
10.00			DLW.10	
10.00	38.00 1.496	15.00 0.591	DLW.10A	Rectangle 15 x 38
15.00	37.00 1.457	26.00 1.024	DLW.15	Rectangle 26 x 37
20.00			DLW.20	
24.00	38.00 1.496	35.00 1.378	DLW.24A	Rectangle 35 x 38
35.00	53.00 2.087	38.00 1.496	DLW.35	Rectangle 53 x 38
40.00	60.00 2.362	38.00 1.496	DLW.40	Rectangle 60 x 38
50.00			DLW.50	
70.00			DLW.70	
70.00			DLW.70.W	114/4 SIZE 9
140.00			DLW.140.W	114/4 SIZE 5