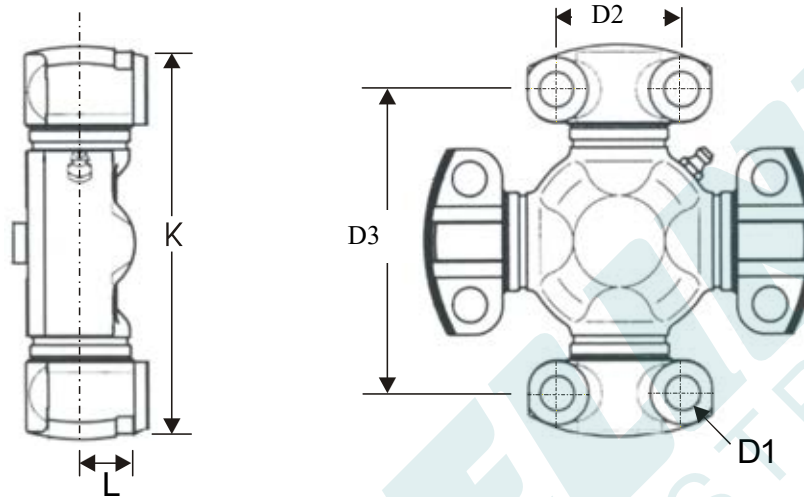


**MECHANICS**

**GENERAL DIMENSIONAL DATA**

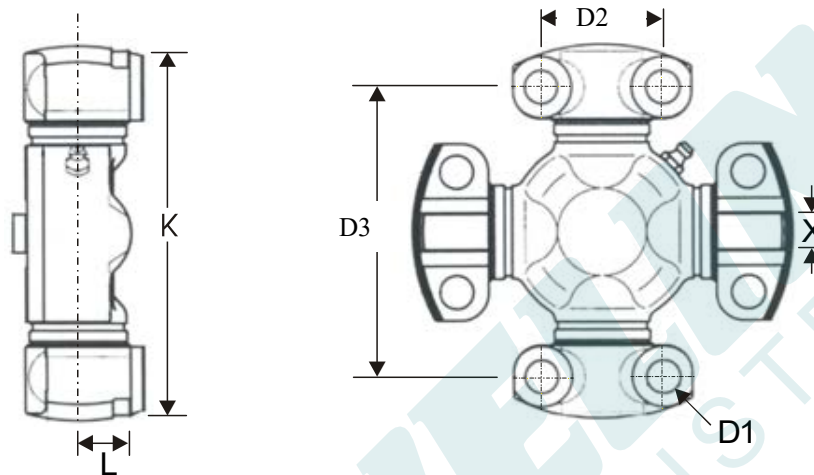


Series	X	D2 x D3 (mm x mm)	K	L	D1 (drilled)	D1 (Bolt thread)
2C	0.38 (9.65)	33.34 x 59.53	3.12 (79.35)	0.52 (13.2)	0.34 (8.64)	5/16 - 24
3C	0.38 (9.65)	36.52 x 69.85	3.56 (90.47)	0.61 (15.5)	0.34 (8.64)	5/16 - 24
4C	0.38 (9.65)	36.52 x 87.32	4.28 (107.92)	0.61 (15.5)	0.34 (8.64)	5/16 - 24
5C	0.56 (14.2)	42.85 x 88.9	4.52 (115.06)	0.69 (17.5)	0.41 (10.4)	3/8 - 24
6C	0.56 (14.2)	42.85 x 114.3	5.52 (140.46)	0.69 (17.5)	0.41 (10.4)	3/8 - 24
7C	0.63 (16.0)	49.21 x 117.6	5.84 (148.38)	0.81 (20.6)	0.53 (13.5)	7/16 - 20
8C	0.63 (16.0)	49.21 x 174.63	8.12 (206.32)	0.81 (20.6)	0.53 (13.5)	1/2 - 20
8.5C	0.63 (16.0)	71.44 x 123.83	6.49 (165.07)	1.00 (25.4)	0.53 (13.5)	1/2 - 20
9C	0.63 (16.0)	71.44 x 168.3	8.24 (209.52)	1.00 (25.4)	0.53 (13.5)	1/2 - 20
9.5C	0.63 (16.00)	71.44 x 168.3	8.24 (209.52)	1.12 (28.4)	0.53 (13.5)	1/2 - 20
10C	1.00 (25.4)	92.07 x 165.1	8.37 (212.70)	1.28 (32.5)	0.66 (16.8)	5/8 - 18 M16 x 2

**Complete range of Mechanics Universal Joints available including 'Lube for Life' design.**

**MECHANICS**

**GENERAL DIMENSIONAL DATA**

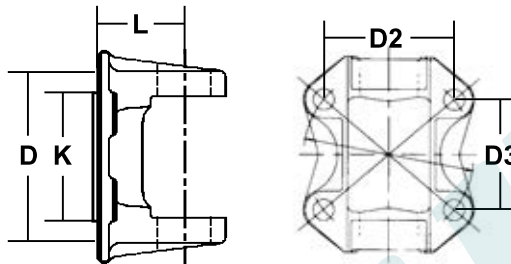


Series	X	D2 x D3 (mm x mm)	K	L	D1 (drilled)	D1 (Bolt thread)
10.5C J490	1.00 (25.4)	88.9 x 172.72	8.75 (222.25)	1.34 (34.0)	0.66 (16.8)	5/8 – 18
11C	1.00 (25.4)	88.9 x 172.72	8.75 (222.25)	1.58 (40.1)	0.78 (20.0)	3/4 - 16
12C	1.00 (25.4)	92.2 x 241.3	11.37 (288.90)	1.28 (32.5)	0.57 (14.5)	5/8 - 18 M14 x 1.5
14C	1.13 (28.6)	134.88 x 269.5	13.33 (338.80)	1.93 (49)	0.72 (18.5)	M18 x 1.5
14.5C	1.13 (44.0)	107.00 x 252.00	13.33 (310)	1.73 (44)	0.72 (18.5)	M22 x 1.5
15C	1.25 (31.8)	99.97 x 199.95	10.23 (259.95)	1.50 (38.1)	0.78 (20.0)	3/4 – 16 M20 x 2.5
15.5C*	1.25 (31.8)	99.97 x 199.95	10.23 (259.95)	1.50 (38.1)	0.78 (20.0)	3/4 – 16 M20 x 2.5
20C	1.90 (48.26)	117.60 x 277.12	13.50 (342.90)	1.97 (50.0)	0.975 (24.76)	M24 x 3.0

**Complete range of Mechanics Universal Joints available including 'Lube for Life' design.**

\*15.5C, IS A HEAVY DUTY VERSION OF THE 15C UNIVERSAL JOINT.  
15.5C HAS LARGER BEARING JOURNALS AND AN INCREASED NUMBER OF NEEDLE ROLLERS

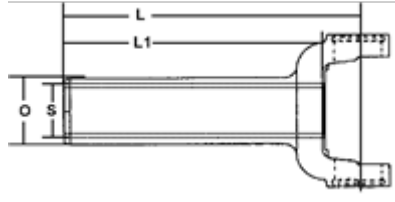
**MECHANICS**



**FLANGE YOKES**

Spigot K	Bolt PCD D	D2	D3	F/C L	Part No.	Notes
<b>SERIES: 17R</b>		<b>Suits U/J RUJ1786</b>		<b>25.40 x 43.64</b>		
1.81 (M) (46.0)	3.06 (77.8)	2.17 (55.0)	2.17 (55.0)	1.57 (40.0)	<b>17R.2.423C</b> <b>USE 2.2.2323</b>	Toyota
1.77 (M) (45.0)	3.51 (89.1)	2.48 (63.0)	2.48 (63.0)	1.70 (43.1)	<b>17R.2.431C</b> <b>USE 2.2.686.1</b>	Mazda
1.77 (M) (45.0)	3.85 (84.8)	2.36 (60.0)	2.36 (60.0)	1.69 (43.0)	<b>17R.2.439C</b> <b>USE 2.2.072</b>	Mazda
2.20 (M) (56.0)	3.53 (89.7)	2.36 (60.0)	2.64 (67.0)	1.62 (41.1)	<b>17R.2.445</b> <b>USE K2.2.1409</b>	Escort
2.25 (M) (57.2)	2.75 (69.9)	1.76 (44.8)	2.11 (53.5)	1.50 (38.0)	<b>17R.2.429</b> <b>USE 2.2.899</b>	1140 Bolt pattern
<b>SERIES: 21R</b>		<b>Suits U/J RUJ2038</b>		<b>27.38 x 54.00</b>		
1.77 (M) (45.0)	4.10 (104.3)	2.91 (74.0)	2.91 (74.0)	1.58 (40.0)	<b>21S.2.452</b> <b>USE 2.2.452</b>	Mazda & Courier @ Diff End *
2.25 (M) (57.1)	3.06 (77.8)	1.51 (38.3)	2.67 (67.6)	1.50 (38.0)	<b>21R.2.444</b>	NLA – for Reference Only Commodore Borg Warner
2.37 (M) (60.3)	3.13 (79.5)	2.00 (50.8)	2.39 (60.7)	1.50 (38.0)	<b>21R.2.457</b> <b>USE 2.2.329</b>	1310 Face
1.77 (M) (45.0)	3.50 (88.9)	2.48 (63.0)	2.48 (63.0)	1.58 (40.0)	<b>21S.2.455</b>	NLA Mazda – for reference only
<b>SERIES: 3R</b>		<b>Suits U/J 114.3105</b>		<b>36.52 x 69.85</b>		
3.13 (F) (79.4)	4.25 (108.0)	3.00 (76.2)	3.00 (76.2)	1.70 (43.2)	<b>3R.21.482</b>	Double Cardan Flange Yoke Suits 4137268 Double Cardan Saginaw

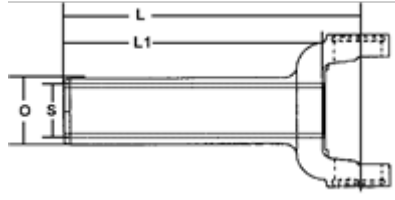
**MECHANICS**



**AUTOMOTIVE SLIP YOKES**

Spline S	C/EOS L	LTH L1	Hub O	Part No.	Application
<b>SERIES: 17R</b>					
<b>Suits U/J RUJ1786 25.40 x 43.64</b>					
0.875 x 16 (22.28 x 16)	5.53 (140.5)	4.53 (115.1)	1.19 (30.2)	<b>17R.3.1848</b> <b>USE 1.3.2418 (1140)</b>	Early Model Ford Escort Aust. Prod.
1.101 x 21 (27.96 x 21)	5.72 (145.2)	4.53 (115.1)	1.49 (37.8)	<b>17R.3.1478</b> <b>USE 2.3.2321X (1210)</b>	Toyota
1.00 x 22 (25.40 x 22)	5.91 (150.0)	4.72 (119.9)	1.38 (35.1)	<b>17R.3.2158</b> <b>USE 2.3.0686X (1210)</b>	Mazda Rotary / Piston - 84
1.004 x 24 (25.50 x 24)	5.84 (148.4)	4.66 (118.3)	1.38 (35.1)	<b>17R.3.1308</b> <b>USE 2.3.1224X (1210)</b>	Datsun 1600 Aust Production
1.113 x 25 (28.27 x 25)	5.53 (140.5)	4.40 (111.8)	1.38 (35.1)	<b>17R.3.1518</b> <b>USE K2.3.4798 (1300)</b>	Escort, Capri
1.190 x 27 (30.23 x 27)	5.20 (132.1)	4.14 (105.2)	1.50 (38.1)	<b>17R.3.1188</b> <b>USE 2.3.1188 (1210)</b>	Holden Various Commodore VK
<b>SERIES: 2R</b>					
<b>Suits U/J RUJ2030 or 114.2101 (greaseable) 25.40 x 59.44</b>					
1.101 x 21 (27.96 x 21)	6.13 (155.6)	4.97 (126.2)	1.49 (37.9)	<b>2R.3.3188</b> <b>USE 2.3.9701X (1310)</b>	Toyota 5 Speed
1.122 x 26 (28.52 x 26)				<b>2R.3.2928</b> <b>USE 2.3.13891X (1310)</b>	Nissan/Commodore VL Auto
1.190 x 27 (30.23 x 27)				<b>2R.3.1278</b> Use 2.3.6081X & RUJ2032	VK/VL 253 V8
1.259 x 30 (32.0 x 30)	6.10 (155.0)	4.92 (125.00)	1.65 (42.0)	<b>2R.3.2938</b> <b>USE 2.3.13311X (1310)</b>	Nissan 300ZX Commodore VL Turbo Manual
<b>SERIES: 21R</b>					
<b>Suits U/J RUJ2038 27.38 x 54.00</b>					
1.101 x 21 (27.96 x 21)	6.06 (154.0)	4.88 (124.0)	1.49 (37.9)	<b>21R.3.3208</b> <b>USE 2.3.9701X (1310)</b>	Toyota 5 Speed
1.000 x 22 (25.40 x 22)	5.71 (145.0)	4.61 (117.0)	1.37 (34.9)	<b>21S.3.3328</b> <b>USE 2.3.3328 (1310)</b>	Mazda & Courier
1.004 x 24 (25.50 x 24)	6.14 (156.0)	4.53 (115.0)	1.37 (34.9)	<b>21R.3.3138</b> <b>USE 2.3.13461X (1310)</b>	Nissan
1.113 x 25 (28.27 x 25)	5.98 (152.0)	4.84 (123.0)	1.49 (37.9)	<b>21S.3.3318</b> <b>USE 2.3.3318.1 (1310)</b>	Mazda E2200 V6-929 Mazda late models
1.122 x 26 (28.50 x 26)	6.10 (155.0)	5.00 (127.0)	1.49 (37.9)	<b>21R.3.3140</b> <b>Also 2.3.13891X (1310)</b>	Nissan Skyline – VL Commodore Auto Jatco

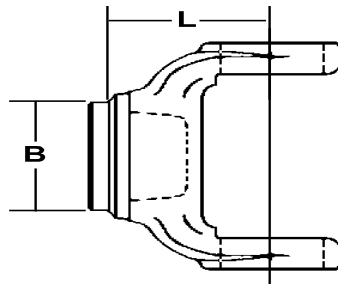
**MECHANICS**



**AUTOMOTIVE SLIP YOKES**

Spline S	C/EOS L	LTH L1	Hub O	Part No.	Application
<b>SERIES: 21R</b>	<b>Suits U/J</b>	<b>RUJ2038</b>	<b>27.38 x 54.00</b>	<b>Continued</b>	
1.190 x 27 (30.23 x 27)	6.10 (155.0)	4.96 (126.0)	1.50 (38.1)	<b>21R.3.3168</b> <b>USE 2.3.6081X (1310)</b>	Commodore VN Auto / Skyline Auto T350
1.220 x 28 (30.98 x 28)	6.10 (155.0)	4.96 (126.0)	1.50 (38.1)	<b>21R.3.3158</b> <b>USE 2.3.8251X (1310)</b>	Ford C4, Top Loader, Comm 5spd Commodore VN Manual
1.284 x 30 (32.61 x 30)				<b>21R.3.3738</b> <b>USE 2.3.13311X (1310)</b>	
1.320 x 30 (33.53 x 30)	8.01 (203.5)	6.89 (175.0)	1.67 (42.8)	<b>21S.3.3248</b> <b>USE 2.3.3575X (1310)</b>	Chrysler – Valiant Torque Flight
<b>SERIES: 25R</b>	<b>Suits U/J</b>	<b>RUJ2500</b>	<b>28.58 x 59.44</b>		
1.190 x 27 (30.23 x 27)	5.87 (149.2)	4.59 (116.7)	1.50 (38.1)	<b>25R.3.1488</b> <b>USE 2.3.6081X (1310)</b>	Holden 1 Tonne (not T400)
1.397 x 32 (35.48 x 32)	7.18 (182.3)	5.83 (148.2)	1.88 (47.8)	<b>25R.3.1538</b> <b>USE 2.3.9131X (1310)</b>	Holden 350 V8 Auto Turbo 400
<b>SERIES: 3R</b>	<b>Suits U/J</b>	<b>114.3105</b>	<b>28.58 x 65.10</b>		
1.190 x 27 (30.23 x 27)	5.51 (140.0)	4.85 (123.2)	1.50 (38.1)	<b>3R.3.6081X</b>	Holden
1.397 x 32 (35.48 x 32)	7.60 (193.0)	6.69 (17.0)	1.88 (47.8)	<b>3R.3.9131X</b>	Turbo 400
<b>SERIES: 7290</b>	<b>Suits U/J</b>	<b>114.232</b>	<b>28.58 x 65.67(Internal)</b>		
1.312 x 30 (33.32 x 30)				<b>729.3.1932X</b>	Chrysler. Conv Joints- 21R-405002;3R-405001; 1310-401009;1330-5.355X

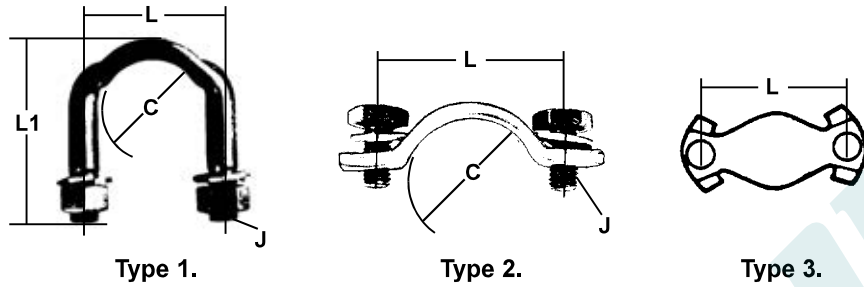
**MECHANICS**



**AUTOMOTIVE WELD YOKES**

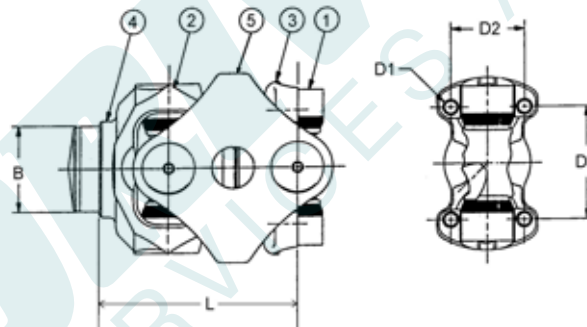
Tube Size	Butt B	W/C L	Part No.	Notes
<b>SERIES: 17R</b>	<b>Suits U/J</b>	<b>RUJ1786</b>	<b>25.40 x 43.64</b>	
2.50x.065 (63.5 x 1.65)	2.38 (60.5)	1.69 (41.0)	17R.26.231 USE 2.28.1947 (1210)	
2.75x.065 (69.9 x 1.65)	2.63 (66.8)	1.22 (31.2)	17R.26.350 USE 2.28.1947.1 (1210)	
<b>SERIES: 2R</b>	<b>Suits U/J</b>	<b>RUJ2030 or 114.2101 (greasable)</b>	<b>25.40 x 59.44</b>	
2.50x.065 (63.5 x 1.65)	2.39 (60.6)	1.89 (48.0)	2R.26.212 USE 2.28.277 (1310)	
<b>SERIES: 21R</b>	<b>Suits U/J</b>	<b>RUJ2038</b>	<b>27.38 x 54.00</b>	
3.00x.065 (76.2 x 1.65)	2.89 (73.4)	1.49 (38.0)	21R.26.357 USE 2.28.327 (1310)	
<b>SERIES: 25R</b>	<b>Suits U/J</b>	<b>RUJ2500</b>	<b>28.58 x 59.44</b>	
2.75x.065 (69.9 x 1.65)	2.63 (66.8)	1.81 (46.0)	25R.26.215 USE 2.28.307 (1310)	
<b>SERIES: 3R</b>	<b>Suits U/J</b>	<b>114.3105</b>	<b>28.58 x 65.10</b>	
2.75x.065 (69.9 x 1.65)	2.63 (66.8)	2.24 (57.0)	3R.28.307	
3.00x.065 (76.2 x 1.65)	2.88 (73.1)	1.84 (46.8)	3R.28.327	
3.50x.065 (88.9 x 1.65)	3.37 (85.7)	1.84 (46.8)	3R.28.397	
<b>SERIES: 7290</b>	<b>Suits U/J</b>	<b>114.232</b>	<b>28.58 x 65.67(Internal)</b>	
3.00x.083 (76.2 x 2.10)	2.84 (72.2)	1.87 (47.6)	729.28.437	

**MECHANICS**



**U-BOLTS,  
BEARING STRAPS**

C	L	L1	J	Type	Part No.	No./pack	Notes
<b>U-BOLTS AND BEARING STRAPS</b>							
28.58	40.5	50.7	.312 UNF	1	<b>105</b>	2	Ford 9"
27.38	38.2	-	.250 UNF	2	<b>106</b>	2	21R Series
28.58	46.3	-	.312 UNF	2	<b>108</b>	2	3R Series



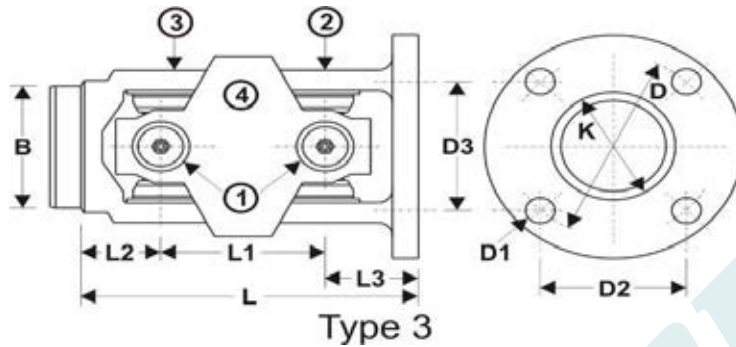
**DOUBLE CARDAN ASSY COMPONENT PARTS 25R**

1	2	3	4	5	6	8
Uni Joint	Uni Joint	Centering Yoke	Housing Weld Yoke	Centre "H" Yoke	Seal, Spring, and Centering Bush	Complete Assembly
<b>SERIES: 2.5RCV</b>						
114.2531	114.2501	25R.21.2531 (c/w- 25R512.0)	25R.25.2501	25R.29.486	25R512.0	

**DIMENSIONAL DATA COMPLETE ASSY**

D1	D2 x D3	B	L	Suits End Yoke
5/16 UNF x 4	1.87 x 2.34 (47.5 x 59.4)	1.875 (47.6)	4.41 (112.0)	<b>(2.64450)</b> 25R.4.2531 (34.92 x 21sp)

**MECHANICS**



**DOUBLE CARDAN ASSY COMPONENT PARTS 3R**

1 Uni	2 CV / Flange	3 Weld	4 Centre "H"	Complete	Overall Length	Centering Tube	Repair
Joints	Yoke	YokeYoke	AssyType	LSize	Kit		
<b>SERIES: 3R</b>		<b>Suits U/J: 114.3105</b>		<b>28.58 x 65.10</b>			
114.3105	3R.21.482	3R.28.3113	3R.26.027	4137268	3	6.563 (166.7)	2.000 x .120 (50.8 x 3.05) <b>CVK2A</b>

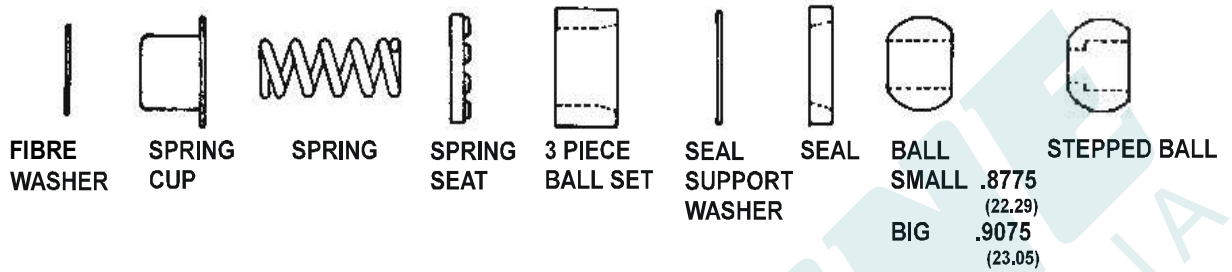
**DIMENSIONAL DATA ON COMPONENT PARTS 3R**

Part No.	Butt B	PCD D	Hole D1	Bolt Pattern D2 D3		Spigot K	C-C L1	C-W L2	C-F L3	Notes
<b>SERIES: 3R</b>		<b>Suits U/J: 114.3105</b>		<b>28.58 x 65.10</b>						
3R.26.057	-	-	-	-	-	-	3.25 (82.5)	-	-	
3R.28.3113	1.77 (45.1)	-	-	-	-	-	-	1.422 (36.1)	-	Suits: 2.000 x .065 (50.8 x 1.65)
3R.28.3111	2.625 (66.6)	-	-	-	-	-	-	1.422 (36.1)	-	Suits: 2.750 x .120 (69.85 x 3.05)
3R.21.482	-	4.25 (107.9)	.453 (11.5)	3.00 (76.3)	3.00 (76.3)	3.125 (F) (79.3)	-	-	1.688 (42.8)	



**MECHANICS**

**BALL SEAT REPAIR KIT COMPONENTS**

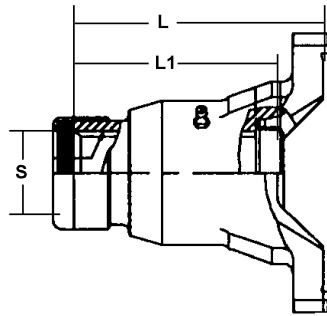


3R Description	Kit No.		Notes
	W/ Ball	W/O Ball	
<b>SAGINAW TYPE:</b>			
Saginaw Type - With large ball With step on ball (Ball size .9075)	<b>CVK2</b>	<b>CVK1</b>	GM OEM #: 7814308 7809156 7816006
Saginaw Type - With large ball W/Out step on ball (Ball size .9075)	<b>CVK2A</b>	<b>CVK1</b>	GM OEM #: 7815848 7829456 Chrysler OEM #: 4030849 4069697
Saginaw type - With small ball (Ball size .8775)	<b>CVK4</b>	<b>CVK3</b>	GM OEM #:1389864. To use CVK3 #7808979
Saginaw type - With small ball (Ball size .8775)	<b>CVK6</b>	<b>CVK5</b>	Supplied with small ball



**MECHANICS**

**LEGEND.**  
 D - Drilled  
 T - Threaded

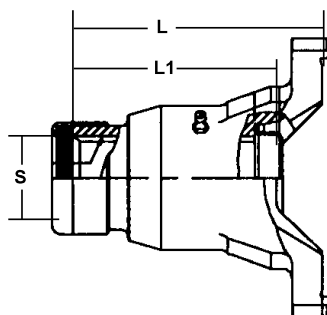


**SLIP YOKES**

Spline S	F/EOS L	LTH L1	Holes	Part No.	Angle	Suits
<b>SERIES: 4C Suits U/J 114.4113 36.52 x 87.32*** NLA – Use 4C.6.503***</b>						
<b>SERIES: 5C Suits U/J 114.5177 42.85 x 88.90</b>						
1.56 x 16 (39.62 x 16)	6.0 (152.4)	5.0 (127.0)	T .375" UNF	<b>5C.3.501</b> NO LONGER AVAILABLE	30°	Wide angle
2.00 x 16 (50.80 x 16)	5.63 (143.0)	4.65 (118.0)	T .375" UNF	<b>5C.3.502</b>	25°	5C.82.502
2.00 x 16 (50.80 x 16)	7.87 (200.0)	6.89 (175.0)	T .375" UNF	<b>5C.3.503</b>	25°	6C.40.604 Stub Machine Butt
<b>SERIES: 6C Suits U/J 114.6128 42.85 x 114.30</b>						
2.00 x 16 (50.80 x 16)	7.87 (200.0)	6.89 (175.0)	T .375" UNF	<b>6C.3.604</b>	25°	6C.40.604 Stub
2.00 x 16 (50.80 x 16)	5.63 (143.0)	5.31 (135.0)	T .375" UNF	<b>6C.3.605</b>	25°	6C.82.605 Y.Shaft
2.00 x 16 (50.80 x 16)	3.03 (77.0)	2.29 (58.0)	T .375" UNF	<b>6C.3.606</b>	25°	6C.82.602 Y.Shaft
2.00 x 16 (50.80 x 16)	2.36 (60.0)	2.00 (50.8)	T .375" UNF	<b>6C.3.607</b>	25°	6C.82.607 Y.Shaft
<b>SERIES: 7C Suits U/J 114.7126 49.21 x 117.60</b>						
2.0 x 16 (50.80 x 16)	4.92 (125.0)	4.06 (103.1)	T .500" UNF	<b>7C.3.703</b>	25°	7C.82.702 Y.Shaft
2.0 x 16 (50.80 x 16)	7.87 (200.0)	6.97 (177.0)	T .500" UNF	<b>7C.3.704</b>	25°	7C.40.703 Stub
<b>SERIES: 8C Suits U/J 114.8113 49.21 x 174.63</b>						
2.5 x 16 (63.50 x 16)	8.63 (219.2)	7.5 (190.5)	T .500" UNF	<b>8C.3.800</b> NO LONGER AVAILABLE	25°	8C.40.800 Stub <b>8C.6.800 Assy</b>
<b>SERIES: 8.5C Suits U/J 114.8516 71.44 x 123.83</b>						
2.5 x 16 (63.50 x 16)	8.63 (219.2)	7.5 (190.5)	T .500" UNF	<b>8.5C.3.850</b>	25°	6.40.541 Stub

**MECHANICS**

**LEGEND.**  
 D - Drilled  
 T - Threaded

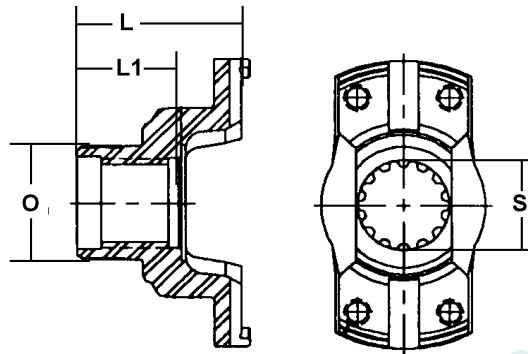


**SLIP YOKES**

Spline S	F/EOS L	LTH L1	Holes	Part No.	Angle	Suits
<b>SERIES: 9C Suits U/J 114.9016 71.44 x 168.30</b>						
3.0 x 16 (76.2 x 16)	10.62 (270.0)	9.37 (238.0)	T .500" UNF	<b>9C.3.901</b>	25°	6.5.40.191 Stub
<b>SERIES: 10C Suits U/J 114.10011 92.07 x 165.10</b>						
3.4 x 32 Inv (86.36 x 32)	12.00 (304.8)	10.25 (260.4)	T .625" UNF	<b>10C.3.1001</b>	25°	10C.40.1001 Stub <b>10C.6.1001 Assy</b>
3.4 x 32 Inv (86.36 x 32)	12.00 (304.8)	10.25 (260.4)	T M16 x 2	<b>10C.3.1002</b>	25°	10C.40.1001 Stub Metric Bolt Holes
3.4 x 32 Inv (86.36 x 32)	9.76 (248.0)	8.00 (203.2)	T M16 x 2	<b>10C.3.1003</b>	25°	Metric Bolt Holes 10C.82.1002
<b>SERIES: J490 Suits U/J 114.10500 88.90 x 172.72***NLA – Use 10C with 114.10033***</b>						
<b>SERIES: 11C/J600 Suits U/J 114.11002 88.90 x 172.72</b>						
4.0 x 38 Inv (101.60 x 38)	13.25 (336.6)	10.75 (273.1)	T .750" UNF	<b>11C.3.1100</b>	25°	15C.40.1500 Stub <b>11C.6.1001 Assy</b>
<b>SERIES: 12C Suits U/J 114.12000 92.20 x 241.30 ****NLA – Use 12C.6.1200***</b>						
<b>SERIES: 15C/J800 Suits U/J 114.15002 99.97 x 199.95</b>						
4.0 x 38 Inv (101.60 x 38)	13.25 (336.6)	10.75 (273.1)	T .750" UNF	<b>15C.3.1500</b>	25°	15C.40.1500 Stub <b>15C.6.1500 Assy</b>
4.0 x 38 Inv (101.60 x 38)	13.25 (336.6)	10.75 (273.1)	T M20 x 2.5	<b>15C.3.1501</b>	25°	15C.40.1500 Stub 15C.82.1501

**MECHANICS**

**LEGEND.**  
D - Drilled  
T - Threaded

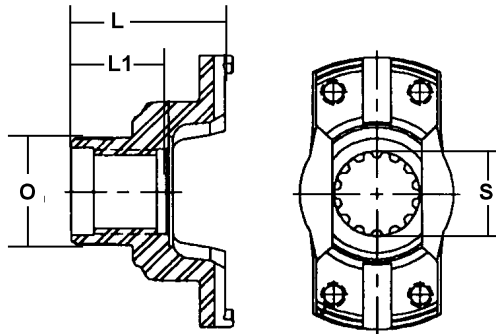


**POPULAR END YOKES**

Spline S	Hub O	LTH L1	F/EOS L	Holes	Part No.	Application
<b>SERIES: 6C</b>						
<b>Suits U/J 114.6128</b>		<b>42.85 x 114.30</b>				
1.750 x 10 (44.4 x 10)	2.63 (66.6)	2.25 (57.1)	3.31 (84.1)	T .375" UNF	<b>6C.4.3681</b>	
1.750 x 10 (44.4 x 10)	Rough	2.85 (72.5)	3.74 (95.0)	T .375" UNF	<b>6C.4.4061</b>	
2.000 x 16 (50.8 x 16)	2.68 (68.0)	2.17 (55.0)	3.94 (100.0)	T .375" UNF	<b>6C.4.600</b>	6C.53.600
1.575 x 15 Inv (40 x 15)	2.13 (54.0)	1.50 (38.0)	3.09 (78.6)	T .375" UNF	<b>6C.4.601</b>	
2.004 x 14 Inv (50.9 x 14)	2.36 (60.0)	2.55 (64.8)	3.49 (88.7)	T .375" UNF	<b>6C.4.602</b>	
<b>SERIES: 7C</b>						
<b>Suits U/J 114.7126</b>		<b>49.21 x 117.60</b>				
1.750 x 10 (44.4 x 10)	3.00 (76.2)	2.25 (57.1)	4.00 (101.6)	T .500" UNF	<b>7C.4.101</b>	
1.750 x 10 (44.4 x 10)	2.95 (75.0)	2.25 (57.1)	4.52 (115.0)	T .500" UNF	<b>7C.4.28.10</b>	
2.000 x 16 (50.8 x 16)	2.68 (68.0)	1.97 (50.0)	3.94 (100.0)	T .500" UNF	<b>7C.4.702</b>	7C.53.702 – 60mm Brg 7C.53.703 – 65mm Brg
2.000 x 31 Inv (50.8 x 31)	2.99 (76.0)	2.00 (51.0)	3.29 (83.5)	T .500" UNF	<b>7C.4.701</b>	7C.53.701
<b>SERIES: 8.5C</b>						
<b>Suits U/J 114.8516</b>		<b>71.44 x 123.83</b>				
2.330 x 36 Inv (58.4 x 36)	3.31 (84.0)	3.27 (83.0)	4.53 (115.0)	T .500" UNF	<b>8.5C.4.850</b>	Suits 8.5C.53.850
2.375 x 18 Inv (60.3 x 18)	3.54 (90.0)	2.13 (54.0)	3.94 (100.0)	T .500" UNF	<b>8.5C.4.852</b>	8.5C.53.852 – 65mm Brg 8.5C.53.853 – 70mm Brg

**MECHANICS**

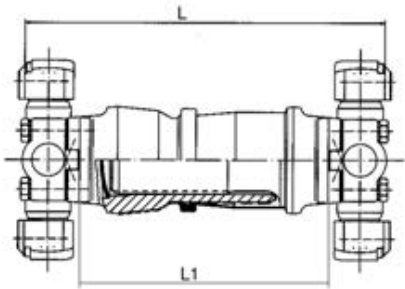
**LEGEND.**  
D - Drilled  
T - Threaded



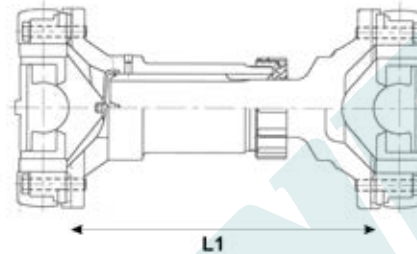
**POPULAR END YOKES**

Spline S	Hub O	LTH L1	F/EOS L	Holes	Part No.	Application
<b>SERIES: 9C Suits U/J 114.9016 71.44 x 168.30</b>						
2.750 x 10 (69.85 x 10)	3.38 (85.7)	2.94 (74.7)	4.38 (111.3)	T .500" UNF	<b>9C.4.2171</b> NO LONGER AVAILABLE	1241 Aux Box (O)
2.375 x 46 (60.33 x 46)	3.25 (82.6)	2.625 (66.7)	3.98 (101.7)	T .500" UNF	<b>9C.4.2701</b> NO LONGER AVAILABLE	SSHD F/I
2.750 x 10 (69.85 x 10)	3.50 (88.9)	4.56 (115.8)	3.00 (76.2)	T .500" UNF	<b>9C.4.1901</b> WHILE STOCKS LAST	Fuller 12.14 Series. 3.5" Seal Fabco T'Case Fuller Aux Box
-	5.28 (134.0)	5.12 (130.0)	5.39 (137.0)	T .500" UNF	<b>9C.4.PB</b>	1.5" Pilot bore
2.750 x 26 Inv (69.85 x 26)	4.00 (101.6)	3.54 (90.0)	5.43 (138.0)	T 0500" UNF	<b>9C.4.901</b>	Midship 9C.53.901
<b>SERIES: 10C Suits U/J 114.10011 92.07 x 165.10</b>						
2.94 x 46 Inv (74.68 x 46)	4.00 (101.6)	3.37 (85.5)	5.34 (135.7)	T	<b>10C.4.3751</b>	
2.40 x 49 (60.96 x 49)	4.00 (101.6)	-	5.34 (135.7)	T M16	<b>10C.4.7289</b>	
<b>SERIES: 15C Suits U/J 114.15002 99.97 x 199.50</b>						
3.59 x 57 Inv	-	-	-	T	<b>15C.4.1500</b>	

**MECHANICS**



Type 2

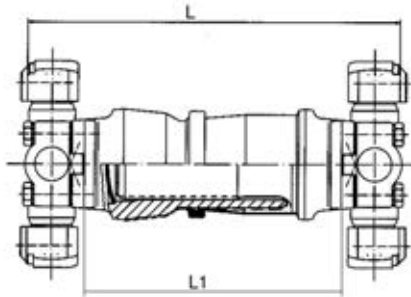


Type 1

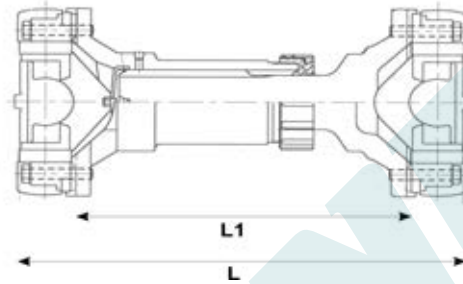
**SHORT COUPLED SHAFT ASSEMBLY**

MF-MF L (comp)	MF-MF L1 (comp)	Total Slip	Holes	Part No.	Type	Notes
<b>SERIES: 5C</b>		<b>Suits U/J 114.5177</b>	<b>42.85 x 88.90</b>			
6.10 (155.0)	3.35 (85.0)	0.78 (20.0)	T .375" UNF	<b>5C.03.155</b>	1	U.Joints Included
7.87 (200.0)	5.12 (130.0)	1.00 (25.4)	T .375" UNF	<b>5C.03.200</b>	1	U.Joints Included
<b>SERIES: 6C</b>		<b>Suits U/J 114.6128</b>	<b>42.85 x 88.90</b>			
8.705 (221.1)	5.945 (151.0)	0.98 (25.0)	T .375" UNF	<b>6C.03.151</b>	1	U.Joints NOT Included
8.70 (221.0)	5.94 (151.0)	1.18 (30.0)	T .375" UNF	<b>6C.03.221</b>	1	U.Joints Included
10.23 (260.0)	7.48 (190.0)	1.77 (45.0)	T .375" UNF	<b>6C.03.190</b>	2	U.Joints NOT Included
<b>SERIES: 7C</b>		<b>Suits U/J 114.7126</b>	<b>49.21 x 117.60</b>			
8.86 (225.0)	5.22 (132.6)	1.18 (30.0)	T .500" UNF	<b>7C.03.225</b>	2	U.Joints Included
10.19 (259.0)	6.95 (176.6)	1.77 (45.0)	T .500" UNF	<b>7C.03.259</b>	2	U.Joints Included
11.02 (280.0)	7.78 (197.6)	2.95 (75.0)	T .500" UNF	<b>7C.03.280</b>	1	U.Joints Included
11.51 (292.4)	8.26 (210.0)	1.96 (50.0)	T .500" UNF	<b>7C.03.210</b>	1	U.Joints NOT Included
12.20 (310.0)	8.96 (227.6)	2.95 (75.0)	T .500" UNF	<b>7C.03.309</b>	1	U.Joints Included
15.45 (392.4)	12.20 (310.0)	4.33 (110.0)	T .500" UNF	<b>7C.03.310</b>	2	U.Joints NOT Included

**MECHANICS**



Type 2

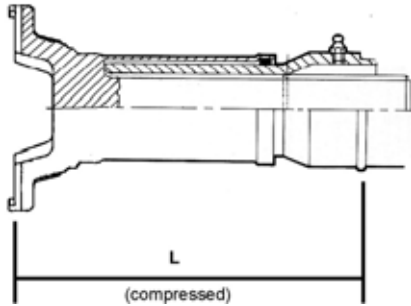


Type 1

**SHORT COUPLED SHAFT ASSEMBLY**

MF-MF L (comp)	MF-MF L1 (comp)	Total Slip	Holes	Part No.	Type	Notes
<b>SERIES: 8C</b>		<b>Suits U/J 114.8113</b>	<b>49.21 x 174.63</b>			
12.40 (315.0)	9.15 (232.6)	1.96 (50.0)	T .500" UNF	<b>8C.03.233</b>	2	U.Joints NOT Included
13.54 (344.0)	10.30 (261.4)	2.36 (60.0)	T .500" UNF	<b>8C.03.344</b>	1	U.Joints Included
14.37 (365.0)	11.12 (282.6)	2.36 (60.0)	T .500" UNF	<b>8C.03.365</b>	1	U.Joints Included
<b>SERIES: 8.5C</b>		<b>Suits U/J 114.8516</b>	<b>71.44 x 123.83</b>			
10.82 (275.0)	6.82 (173.4)	0.78 (20.0)	T .500" UNF	<b>8.5C.03.173</b>	2	U.Joints NOT Included
12.20 (310.0)	8.20 (208.4)	2.56 (65.0)	T .500" UNF	<b>8.5C.03.310</b>	2	U.Joints Included
13.38 (340.0)	9.38 (238.4)	2.56 (65.0)	T .500" UNF	<b>8.5C.03.340</b>	2	U.Joints Included
<b>SERIES: 9C</b>		<b>Suits U/J 114.9016</b>	<b>71.44 x 168.30</b>			
13.66 (347.0)	9.66 (245.4)	2.83 (72.0)	T .500" UNF	<b>9C.03.347</b>	2	U.Joints Included
19.55 (496.6)	15.55 (395.0)	4.00 (101.6)	T .500" UNF	<b>9C.03.935</b>	2	U.Joints NOT Included
17.12 (435.0)	13.12 (333.4)	3.74 (95.0)	T .500" UNF	<b>9C.03.435</b>	2	U.Joints Included
<b>SERIES: 10C</b>		<b>Suits U/J 114.10011</b>	<b>92.07 x 165.10</b>			
24.44 (620.0)	19.29 (490.0)	5.90 (150.0)	T .625" UNF	<b>10C.03.490</b>	2	U.Joints NOT Included

**MECHANICS**



Type 2

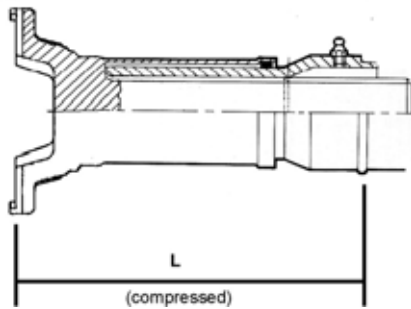
Type 1

**SLIP ASSEMBLIES**

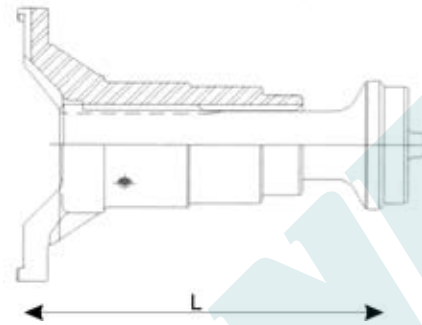
F to Weld L	Butt B	Total Slip	Type	Angle	Holes	Part No.	Suits
<b>SERIES: 4C</b>							
6.33 (161.0)	1.74 (44.2)	1.96 (50.0)	1	22°	T .312" UNF	<b>4C.6.503</b>	50x3 Tube
<b>SERIES: 5C</b>							
7.38 (187.5)	2.29 (58.2)	2.00 (50.8)	1	30°	T .375" UNF	<b>5C.6.501</b>	2.5x.109 Tube
8.07 (205.0)	2.05 (52.2)	4.13 (105.0)	2	25°	T .375" UNF	<b>5C.6.604</b>	60x4 Tube
<b>SERIES: 6C</b>							
6.33 (240.0)	2.44 (62.2)	4.13 (105.0)	2	25°	T .375" UNF	<b>6C.6.704</b>	70x4 Tube
<b>SERIES: 7C</b>							
9.44 (240.0)	2.84 (72.2)	4.33 (110.0)	2	25°	T .500" UNF	<b>7C.6.804</b>	80x4 Tube
9.50 (241.5)	3.16 (80.2)	5.11 (130.0)	2	25°	T .500" UNF	<b>7C.6.884</b>	88x4 Tube
9.65 (245.0)	3.24 (82.2)	-	2	-	T .500" UNF	<b>7C.6.904</b>	90x4 Tube
<b>SERIES: 8C</b>							
11.78 (299.4)	3.47 (88.2)	5.11 (130.0)	2	30°	T .500" UNF	<b>8C.6.1006</b>	100x6 Tube
11.22 (285)	3.63 (92.3)	3.00 (76.2)	1	-	T .500" UNF	<b>8C.6.800</b>	Machine Butt to suit Tube
10.23 (260)	3.29 (83.5)	-	1	-	T .500" UNF	<b>8C.6.801</b>	Machine Butt to suit 90x5.5



**MECHANICS**



Type 2

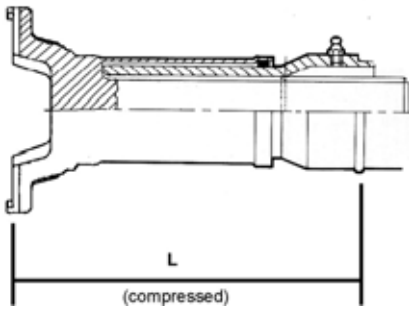


Type 1

**SLIP ASSEMBLIES**

F to Weld L	Butt B	Total Slip	Type	Angle	Holes	Part No.	Suits
<b>SERIES: 8.5C</b>							
12.00 (305.0)	3.55 (90.2)	4.33 (110.0)	2	25°	T .500" UNF	<b>8.5C.6.1005</b>	100x5 Tube
11.41 (290.0)	3.47 (88.2)	5.11 (130.0)	2	25°	T .500" UNF	<b>8.5C.6.1006</b>	100x6 Tube
11.41 (290.0)	3.47 (88.2)	5.11 (130.0)	2	25°	T M12x1.75	<b>8.5C.6.1006M</b>	100x6 Tube
10.43 (265.0)	3.74 (95.1)	3.50 (88.9)	1	25°	T .500" UNF	<b>8.5C.6.850</b>	4.09"X.180 tube
<b>SERIES: 9C</b>							
12.59 (320.0)	3.86 (98.2)	4.33 (110.0)	2	25°	T .500" UNF	<b>9C.6.1106</b>	110x6 Tube
10.43 (265.0)	3.94 (100.2)	5.11 (130.0)	2	25°	T .500" UNF	<b>9C.6.11575</b>	115x7.5 Tube
10.43 (265.0)	3.94 (100.2)	5.11 (130.0)	2	25°	T .M12 x 1.75	<b>9C.6.11575M</b>	115x7.5 Tube
12.40 (315.0)	4.01 (101.8)	4.13 (105.0)	1	25°	T .500" UNF	<b>9C.6.902</b>	4.5x.259 Tube
13.19 (335)	3.99 (101.3)	3.94 (100)	1	25	T .500" UNF	<b>9C.6.903</b>	4.5x.259 Tube
13.250	3.75 (95.2)	3.250	1	25	T .500" UNF	<b>9C.6.904</b>	4.5x.375 Tube
12.59 (320.0)	4.24 (107.7)	4.50 (114.3)	1	25°	T .500" UNF	<b>9C.6.901</b>	4.59x.180 Tube
<b>SERIES: 10C</b>							
15.55 (395.0)	5.12 (130.2)	5.90 (150.0)	2	25°	T .625" UNF	<b>10C.6.1006</b>	140x5 or 145x7.5 Tube
15.55 (395.0)	5.12 (130.2)	5.90 (150.0)	2	25°	T M12 x 1.75	<b>10C.6.1006M</b>	140x5 or 145x7.5 Tube
14.38 (365.3)	4.26 (108.2)	4.25 (108.1)	1	25°	T .625" UNF	<b>10C.6.1001</b>	5"x.375 Tube

**MECHANICS**



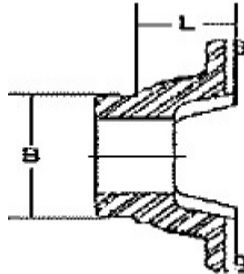
Type 2

**SLIP ASSEMBLIES**

F to Weld L	Butt B	Total Slip	Type	Angle	Holes	Part No.	Suits
<b>SERIES: 11C</b>							
15.55 (395.0)	5.12 (130.2)	5.90 (150)	2	25°	T .75 " UNF	<b>11C.6.1106</b>	140x5 or 145x7.5 Tube
<b>SERIES: 12C</b>							
14.09 (380.0)	5.52 (202.8)	5.90 (135.0)	2	25°	T M14 x 1.5	<b>12C.6.1202</b>	160x10 Tube
<b>SERIES: 14C</b>							
14.96 (380.0)	7.98 (202.8)	5.31 (135.0)	2	25°	T M18 x 1.5	<b>14C.6.1400</b>	219.2x13.3 tube
<b>SERIES: 15</b>							
16.44 (417.6)	5.75 (146.3)	5.00 (127.0)	1	25	T .750" UNF	<b>15C.6.1500</b>	6.5x.375" Tube
17.12 (435.0)	6.00 (152.41)	5.00 (127.0)	2	25°	T .750" UNF	<b>15C.6.1502</b>	Suits 171.45x9.52 Tube

**MECHANICS**

**LEGEND.**  
D - Drilled  
T - Threaded

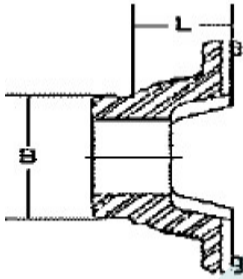


**WELD YOKES**

Tube Size	Butt B	W/F L	Holes	Part No.	Angle	Notes
<b>SERIES: 3C</b>						
<b>Suits U/J 114.3105 36.52 x 69.85</b>						
2.5x.083 (63.5 x 2.11)	2.34 (59.4)	1.25 (31.8)	D .312" UNF	<b>3C.28.300</b>	20°	
<b>SERIES: 4C</b>						
<b>Suits U/J 114.4113 36.52 x 87.32</b>						
2.5x.083 (63.5 x 2.11)	2.34 (59.4)	1.25 (31.8)	T .312" UNF	<b>4C.28.400</b>	25°	
50x3	44.2	52.0	T .312" UNF	<b>4C.28.503</b>	22°	
<b>SERIES: 5C</b>						
<b>Suits U/J 114.5177 42.85 x 88.90</b>						
2.5X.109 (63.5X2.77)	2.29 (58.3)	2.75 (69.9)	T .375" UNF	<b>5C.28.501</b>	30°	
73x4	65.1	46.7	T .375" UNF	<b>5C.28.502</b>	25°	
58x4	50.2		T .375" UNF	<b>5C.28.584</b>	30°	
<b>SERIES: 6C</b>						
<b>Suits U/J 114.6128 42.85 x 114.30</b>						
3x.095 (76.2 x 2.41)	2.82 (71.6)	1.88 (47.7)	T .375" UNF	<b>6C.28.600</b>	25°	
<b>SERIES: 7C Suits U/J 114.7126 49.21 x 117.60</b>						
3.5x.134 (88.9 x 3.40)	3.24 (82.3)	1.77 (45.0)	T .500" UNF	<b>7C.28.702</b>	25°	
3.5x.134 (88.9 x 3.40)	3.24 (82.3)	1.77 (45.0)	T M12 x 1.75	<b>7C.28.702M</b>	25°	
<b>SERIES: 8C Suits U/J 114.8113 49.21 x 174.63</b>						
4x.187 (101.6 x 4.75)	3.63 (92.2)	2.69 (68.3)	T .500" UNF	<b>8C.28.800</b>	30°	
-	3.29 (83.5)	2.56 (65)	T .500" UNF	<b>8C.28.801</b>		Machine Butt to suit 90x5.5
100x6	88.2	65.0	T .500" UNF	<b>8C.28.1006</b>	25°	

**MECHANICS**

**LEGEND.**  
D - Drilled  
T - Threaded

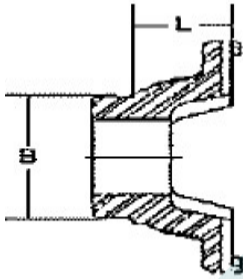


**WELD YOKES**

Tube Size	Butt B	W/F L	Holes .500" UNF	Part No.	Angle	Notes
<b>SERIES: 8.5C Suits U/J 114.8516 71.44 x 123.23</b>						
100x6	3.47 (88.15)	2.60 (66.0)	T M12x1.75	<b>8.5C.28.1006M</b>	25°	Use 8.5C.28.851 Machine Butt
100x6	3.47 (88.15)	2.60 (66.0)	T .500" UNF	<b>8.5C.28.854</b>	25°	
4.09x.180 (103.9 x 4.57)	3.74 (95.0)	2.60 (66.0)	T .500" UNF	<b>8.5C.28.851</b>	25°	
4.09x.180 (103.9 x 4.57)	3.74 (95.0)		T .500" UNF	<b>8.5C.28.853</b>	25°	Internal 2.5" x 16 Spline for fabricated y/shafts
<b>SERIES: 9C/J310 Suits U/J 114.9016 71.44 x 168.30</b>						
4.5x.250 (114.3 x 6.35)	4.00 (101.6)	2.50 (63.5)	T .500" UNF	<b>9C.28.900</b>	25°	
4.5x.250 (114.3 x 6.35)	4.00 (101.6)	2.50 (63.5)	T M12 x 1.75	<b>9C.28.900M</b>	25°	
110x6	98.2	65.0	T	<b>9C.28.1106</b>		Use 9C.28.900 Machine Butt
4.5x.375 (114.3 x 9.53)	3.250 (82.55)	2.50 (63.5)	T .500" UNF	<b>9C.28.904</b>	25°	
<b>SERIES: 10C Suits U/J 114.10011 92.07 x 165.10</b>						
5x.375 (63.5 x 2.77)	4.25 (58.3)	4.00 (101.6)	T .625" UNF	<b>10C.28.1001</b>	25°	
140x5	130.2	95.0	T .625" UNF	<b>10C.28.1006</b>	20°	
140x5	130.2	85.0	T .625" UNF	<b>10C.28.1006.1</b>	25°	
140x5	130.2	95.0	T M16 x 2.0	<b>10C.28.1006M</b>	20°	
140x5	130.2	95.0	T M16 x 2.0	<b>10C.28.1006.1M</b>	25°	

**MECHANICS**

**LEGEND.**  
D - Drilled  
T - Threaded

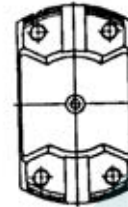
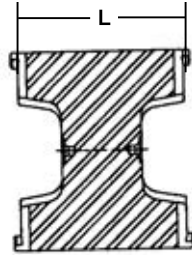


**WELD YOKES**

Tube Size	Butt B	W/F L	Holes	Part No.	Angle	Notes
<b>SERIES: J490</b>	<b>Suits U/J 114.10500</b>	<b>88.90 x 172.72</b>				
6.5x.250 (165.1 x 6.40)	6.00 (152.4)	3.20 (81.3)	T .625" UNF	<b>10.5C.28.001</b> WHILE STOCKS LAST		Use 10C components with 114.1003 joint 10C – J490
<b>SERIES: 11C/J600</b>	<b>Suits U/J 114.11002</b>	<b>88.90 x 172.72</b>				
6.5x.375 (165.1 x 9.53)	5.75 (146.1)	3.50 (88.9)	T .750" UNF	<b>11C.28.1100</b> WHILE STOCKS LAST		
140x5	130.2	108.5	T .750" UNF	<b>11C.28.1106</b>		
<b>SERIES: 12C</b>	<b>Suits U/J 114.12002</b>	<b>92.20 x 241.30</b>				
160x10	5.56	3.82	T M14 x 1.5	<b>12C.28.1202</b>	25°	
<b>SERIES: 14C</b>	<b>Suits U/J 114.14000</b>	<b>134.88 x 269.50</b>				
219.2x13.3	192.8	100.0	T M18 x 1.5	<b>14C.28.1400</b>	25°	tube to be bored out
<b>SERIES: 15C/J800</b>	<b>Suits U/J 114.15002</b>	<b>99.97 x 199.95</b>				
6.50x.375 (165.1 x 9.53)	5.75 (146.1)	4.00 (101.6)	T M20 x 2.5	<b>15C.28.1501</b>	25°	
6.75 x.375 (171.45 x 9.52)	6.006 (152.55)	3.50 (89.0)	T 0.750" UNF	<b>15C.28.1502A</b>	25°	
7.25x.250 (184.1x6.35)	6.76 (171.8)	3.50 (89.0)	T M20 x 2.5	<b>15C.28.1504</b>	25°	Machine Butt to suit
6.75 x.375 (171.45 x 9.52)	6.006 (152.55)	3.50 (89.0)	T M20 x 2.5	<b>15C.28.1504A</b>	25°	
<b>SERIES: 14.5C</b>	<b>Suits U/J 114.14000</b>	<b>134.88 x 269.50</b>				
215.9x12.7	190.7	100.0	T M22 x 1.5	<b>14.5C.28.14500</b>	25°	Tube to bored out
<b>SERIES: 20C</b>	<b>Suits U/J 114.20000LFL</b>	<b>134.88 x 269.50</b>				
215.9x12.7	190.7	140.0	T M24 x 3.0	<b>20C.28.2000</b>		Tube to be bored out

**MECHANICS**

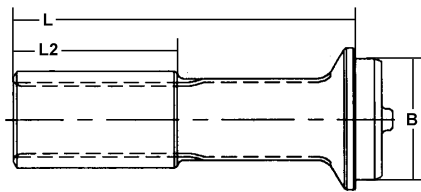
**HOLES LEGEND**  
 D - Drilled  
 T - Threaded



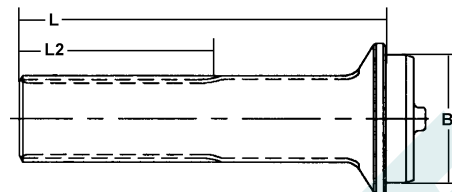
**CENTRE PLATES**

Face/Face L	Holes	Part No.	Notes
<b>SERIES: 17C</b>			
0.78 (19.8)	D	<b>17C.29.4813</b> WHILE STOCKS LAST	
<b>SERIES: 2C</b>			
	Suits U/J 114.2185 D	<b>2C.29.4853</b> WHILE STOCKS LAST	
<b>SERIES: 8C</b>			
2.92 (74.2)	Suits U/J 114.8113 T .500" UNF	<b>8C.29.25993J</b> WHILE STOCKS LAST	
<b>SERIES: 9C</b>			
4.50 (114.3)	Suits U/J 114.9016 T .500" UNF	<b>9C.29.901</b>	
<b>SERIES: 10.5C /J490</b>			
2.30 (114.3)	Suits U/J 114.10500 T .625" UNF	<b>10.5C.29.001</b> WHILE STOCKS LAST	

**MECHANICS**



Type 1.

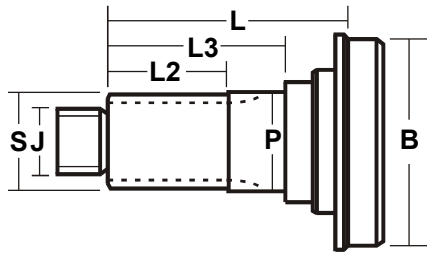


Type 2.

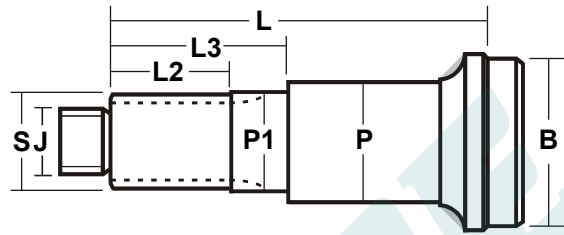
**STUB SHAFTS**

Spline S	Tube Size	Butt B	W/EOS		Type	Part No.	Suits
			L	L2			
<b>SERIES: 5C</b>							
1.56 x 16 (39.62 x 16)	2.5x.109 (63.5 x 2.77)	2.28 (57.9)	6.38 (162.1)	3.00 (76.2)	1	<b>5C.40.500</b>	5C.3.501 Slip
<b>SERIES: 6C</b>							
2.00 x 16 (50.80 x 16)	3x.095 (76.2 x 2.41)	2.81 (71.5)	8.78 (223.0)	3.00 (76.2)	1	<b>6C.40.604</b>	6C.3.604 Slip
<b>SERIES: 7C</b>							
2.0 x 16 (50.80 x 16)	3.50x.134 (88.9 x 3.40)	3.24 (82.3)	8.78 (223.0)	3.50 (88.9)	1	<b>7C.40.703</b>	7C.3.704 Slip
2.0 x 16 (50.80 x 16)	3.50x.134 (88.9 x 3.40)	3.24 (82.3)	9.13 (232.0)	3.54 (90.0)	1	<b>7C.40.704</b>	Steel spline
<b>SERIES: 8C / 8.5C</b>							
2.5 x 16 (63.50 x 16)	4x.187 (101.9 x 4.75)	3.63 (92.2)	10.0 (254.0)	4.50 (114.3)	1	<b>8C.40.800</b>	8C.3.800 Slip <b>8C.6.800 Assy</b>
<b>SERIES: 9C</b>							
3.00 x 16 (76.2 x 16)	4.5 x .259 ( )	3.99	11.73 298	4.00	1	<b>9C.40.901</b>	
<b>SERIES: 10C</b>							
3.4 x 32 Inv (86.36 x 32)	5x.375 (127.0 x 9.53)	4.25 (108.0)	12.5 (317.5)	6.00 (152.4)	1	<b>10C.40.1001</b>	10C.3.1001 Slip <b>Use 10C.6.1001 Assy</b>
<b>SERIES: 11C/J600</b>							
4.0 x 37 b/on 38 (101.60 x 37 b/on 38)	6.5x.375 (165.1 x 6.35)	5.75 (146.1)	14.2 (360.4)	6.50 (165.1)	1	<b>15C.40.1500</b>	<b>Use 11C.6.1001 or</b> 11C.6.1106
<b>SERIES: 15C/J800</b>							
4.0 x 37 b/on 38 (101.60 x 37 b/on 38)	6.5x.375 (165.1 x 6.35)	5.75 (146.1)	14.2 (360.4)	6.50 (165.1)	1	<b>15C.40.1500</b>	<b>15C.3.1500 Slip</b> <b>15C.6.1500</b>

**MECHANICS**



Type 3.



Type 4.

**MIDSHIP STUBS**

Tube Size	Butt B	W-EOS L	L2	L3	P	J	Type	Part No.	Notes / Suggestions
<b>SPLINE: 1.75 x 10</b> (44.45 x 10)									
3.00 x .134 (76.2 x 3.40)	2.77 (70.3)	4.84 (123.0)	2.12 (54.0)	4.06 (103.2)	1.94 (49.2)	1.25 x 18	3	<b>7C.53.700</b>	
<b>SPLINE: 2.00 x 16</b> (50.80 x 16)									
3.50 x .134 (88.9 x 3.40)	3.24 (82.3)	7.96 (202.3)	1.97 (50.0)	7.01 (178.3)	2.36 (60.0)	M27 x 2	4	<b>7C.53.702</b>	6C.4.600 7C.4.702
3.50 x .134 (88.9 x 3.40)	3.24 (82.3)	7.96 (202.3)	1.97 (50.0)	7.01 (178.3)	2.55 (65.0)	M27 x 2	4	<b>7C.53.703</b>	6C.4.600 7C.4.702
<b>SPLINE: 2.00 x 31 Inv</b> (50.80 x 31 Inv)									
3.50 x .120 (88.9 x 3.00)	3.26 (83.0)	7.25 (184.3)	1.88 (47.7)	6.10 (155.0)	2.44 (61.9)	1.25 x 18	4	<b>7C.53.701</b>	7C.4.701 Keyway on bearing surface
<b>SPLINE: 2.33 x 36 Inv</b> (59.18 x 31 Inv)									
4.00 x .187 (101.6 x 4.75)	3.63 (92.2)	8.88 (225.0)	3.12 (79.2)	7.84 (199.1)	2.68 (68.2)	1.25 x 18	4	<b>8.5C.53.850</b>	8.5C.4.850
<b>SPLINE: 2.36 x 18 Inv</b> (60.00 x 18 Inv)									
4.00 x .187 (101.6 x 4.75)	3.63 (92.2)	8.66 (220.0)	2.12 (54.0)	7.36 (186.0)	2.55 (65.0)	M33 x 2	4	<b>8.5C.53.852</b>	8.5C.4.852
<b>SPLINE: 2.75 x 26 Inv</b> (70.00 x 26 Inv)									
4.50 x .259 (114.3 x 6.57)	3.99 (101.4)	12.20 (310.0)	3.54 (90.0)	6.10 (155.0)	2.95 (75.0)	M45 x 3	4	<b>9C.53.901</b>	9C.4.901
<b>SPLINE: 2.91 x 46 Inv</b> (73.91 x 46 Inv)									
5.00 x .375 (127.0 x 9.52)	4.25 (107.9)	8.39 (213.1)	3.19 (81.0)		2.95 (74.9)	.750" UNC	3	<b>10C.53.1001</b>	<b>10C.53.1002X</b> ; J=M20x2.5
<b>SPLINE: 2.91 x 46 Inv</b> (73.91 x 46 Inv)									
6.50 x .375 (165.0 x 9.52)	5.75 (146.2)	8.20 (208.3)	3.19 (81.0)		4.00 (101.6)		3	<b>10C.53.994</b>	<b>SPECIAL ORDER ONLY</b>
<b>SPLINE: 3.59 x 57 Inv</b> (91.20 x 57 Inv)									
6.50 x .375 (165.9 x 9.52)	5.75 (146.2)	11.19 (284.2)	3.95 (100.3)	8.26 (210.0)	3.94 (100.0)	M20 x 2.5	3	<b>15C.53.1500</b>	Female thread
6.50 x .375 (165.9 x 9.52)	5.75 (146.2)	11.38 (289.1)	4.03 (102.4)		3.81 (96.8)	.750" UNF	3	<b>15C.53.1501</b>	Female thread



**MECHANICS**

**MIDSHIP ASSEMBLY**

Spline S	Tube Size	Butt B	W/Face L	Bearing Area L2	Part No.	Suits
<b>SERIES: 10C</b>						
3.543 x 34 (90 x 34)	5.512 x 0.197 (140 x 5)	5.126 (130.2)	11.732 (298)		<b>10C.8.1000X</b>	90Mmm Bearing

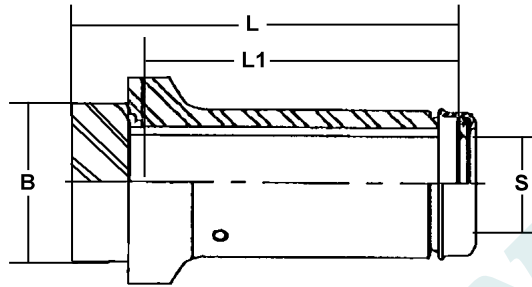
**MIDSHIP NUTS/BOLTS & WASHERS**

Thread Size	Part No.	Notes
1¼" x 18	<b>231502</b>	Self Lock Nut Flanged Std
	<b>230123.6</b>	Washer
M27 x 2 (28id x 50od x 4 thick)	<b>6C.74.600</b>	Nyloc Nut 6C & 7C
	<b>6C.73.600</b>	Washer
M33 x 2 (35id x 65od x 4 thick)	<b>8.5C.74.852</b>	Nyloc Nut
	<b>8.5C.73.852</b>	Washer
M45 x 3 (47id x 85od x 6 thick)	<b>9C.74.901</b>	Nyloc Nut
	<b>9C.73.901</b>	Washer

**MIDSHIP SPACERS**

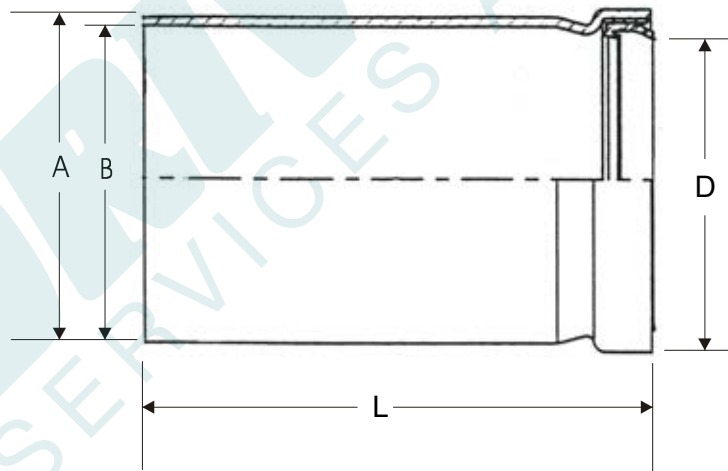
Size	Part No.	Notes
52.0 id x 60.0 od x 34 long	<b>7C.99.702</b>	Suit 7C.53.702
52.0 id x 65.0 od x 34 long	<b>7C.99.703</b>	Suit 7C.53.703
60.3 id x 65.0 od x 28 long	<b>8.5C.99.852</b>	Suit 8.5C.53.852
60.3 id x 70.0 od x 28 long	<b>8.5C.99.853</b>	Suit 8.5C.53.853

**MECHANICS**



**BARREL and STUB SETS**

Spline S	L	LTH L1	Butt B	Part No.	Suits
<b>SERIES: 11C/12C/15C</b>					
127 x 49	-	290.0	192.8	<b>15C.45.1504</b>	Suit 219 Tube
<b>SERIES: 14C/14.5C/20C</b>					
150 x 48	335.0	255.0	192.8	<b>14.5C.45.150</b>	219 Tube

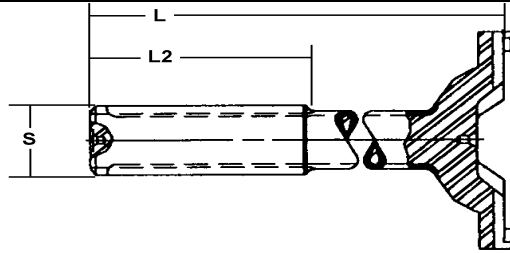


**REPLACEMENT DUST COVERS**

Series Application	OD A	ID B	Seal D	Length L	Part No.	Suits
6C.6.704	70.0	68.0	62.0	140.0	<b>6C.86.704</b>	
7C.6.804	80.0	78.0	70.0	133.0	<b>7C.86.804</b>	
8C.6.904	85.0	82.0	75.0	150.0	<b>8C.86.904</b>	
8.5C.6.1005	90.0	87.0	81.0	160.0	<b>8.5C.86.1005</b>	
8C.6.904	100.0	97.0	92.0	175.0	<b>9C.86.1106</b>	
9C.6.11575	122.0	116.0	110.0	210.0	<b>587.48.86</b>	Also suits 10C.6.1006 & 11C.6.1106

**MECHANICS**

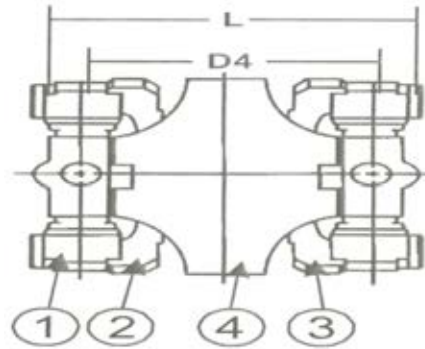
**LEGEND.**  
 D - Drilled  
 T - Threaded



**YOKE SHAFTS**

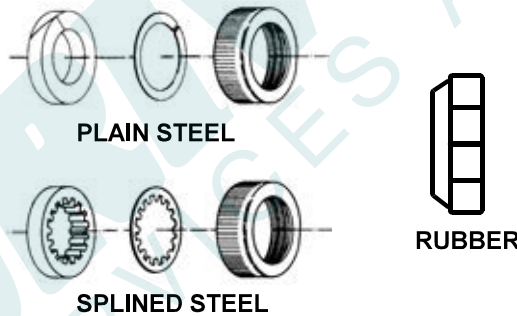
Spline S	F/EOS L	LTH L2	Holes	Part No.	Angle	Suits
<b>SERIES: 5C</b>						
2.00 x 16 (50.80 x 16)	3.267 (83.0)	1.181 (30.0)	T .375" UNF	<b>5C.82.504</b>	15°	
2.00 x 16 (50.80 x 16)	5.71 (145.0)	2.00 (50.8)	T .375" UNF	<b>5C.82.502</b>	20°	5C.3.502 Slip
<b>SERIES: 6C</b>						
2.0 x 16 (50.80 x 16)	6.81 (173.0)	2.5 (63.5)	T .375" UNF	<b>6C.82.605</b>	25°	6C.3.605 Slip
<b>SERIES: 7C</b>						
2.0 x 16 (50.8 x 16)	6.89 (175.0)	2.25 (57.2)	T .500" UNF	<b>7C.82.702</b>	25°	7C.3.703 Slip
<b>SERIES: 8C</b>						
2.5 x 16 (63.50 x 16)	8.00 (203.0)	3.00 (76.2)	T 500" UNF	<b>8C.82.203</b>	25°	
<b>SERIES: 8.5C</b>						
2.5 x 16 (76.20 x 16)	7.87 (200.0)	5.12 (130.0)	T 500" UNF	<b>8.5C.82.200</b>	25°	9C.3.901 Slip
<b>SERIES: 9C</b>						
3.0 x 16 (76.20 x 16)	10.63 (270.0)	5.12 (130.0)	T 500" UNF	<b>9C.82.270</b>	25°	9C.3.901 Slip
<b>SERIES: 10C</b>						
3.40 x 32 (86.4 x 16)	18.11 (460.0)	6.00 (152.4)	T .625" UNF	<b>10C.82.1001.1</b>		
3.40 x 32 (86.4 x 16)	11.38 (289.1)	5.40 (137.2)	T M16 x 2.0	<b>10C.82.1003</b>		Metric Bolt Holes
<b>SERIES: 15C</b>						
4.0 x 38 (101.6 x 16)	14.96 (380.0)	4.00 (101.6)	T M20 x 2.5	<b>15C.82.1501</b>		15C.3.1501

**MECHANICS**



**DOUBLE CARDAN - Dimensional data**

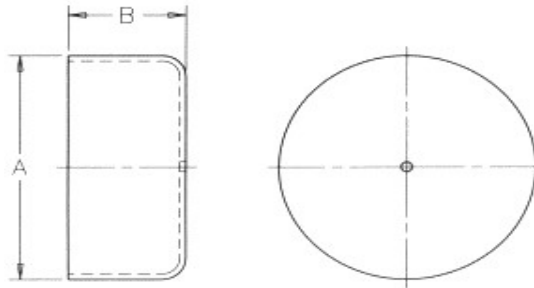
Item	L	CI to CI	Part No.	Suits Weld Yoke(s)
8	5.91 (150.0)	4.53 (115.0)	<b>800R6128</b>	Standard 6C Suits U/J 114.6285
8	8.03 (204.0)	6.40 (162.8)	<b>800R7126</b>	Standard 7C



**DUST CAPS**

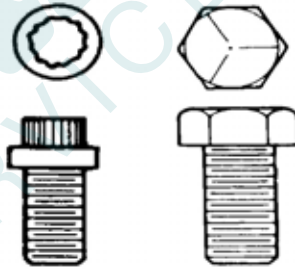
Part No.	Spline S	Spline Y/N	Type	Compound	Suits
<b>10C.86.1000</b>	3.4 x 32	N	Screw	Steel	10C.3.1001
<b>15C.86.1500</b>	4.0 x 38	N	Screw	Steel	11C.3.1100 15C.3.1500 15C.3.1501 15C.55.1500
<b>5C.DCK</b>	1.56 x 16	N	Screw	Steel	5C.3.501
<b>5.86.68</b>	2.0 x 16	N	Screw	Rubber	5C.3.502 5C.3.503 6C.3.604 6C.3.606 7C.3.703 7C.3.704
<b>6C.DCK</b>	1.75 x 16	N	Screw	Steel	Rockford 6C Slip Yokes
<b>6C.DCK.1</b>	1.75 x 10	N	Screw	Steel	
<b>6.3.86.18</b>	2.50 x 16	N	Screw	Rubber	8.5C.3.850
<b>6.5.86.38</b>	3.00 x 16	N	Screw	Rubber	9C.3.901

**MECHANICS**



**WELCH PLUGS**

Part No.	A	B	Suits	Notes
<b>5C.68.60753</b>	43.1	17.0	10spl S/yokes	1.6mm Thickness
<b>6C.68.704.</b>	50mm	8.0 Dished	7C.6.704	2.0mm Thickness
<b>9C.68.60766</b>	84.5	30.0	9C.6.903	3.2mm Thickness
<b>10C.68.1000</b>	88.9	Flat	10C.3.1003X	1/” NTP Hole for Relief Valve
<b>10C.68.R1700</b>	95.3	12.8	10C.3.1001X	1/” NTP Hole for Relief Valve
<b>15C.68.1504</b>	93.9	Flat	15C.45.1504X	2.0mm Thickness
<b>15C.68.1504.2</b>	83.0	Flat	15C.45.1504X	2.0mm Thickness
<b>15C.68.1504X</b>	137.0	19.0	15C.45.1504X	1.5mm Thickness

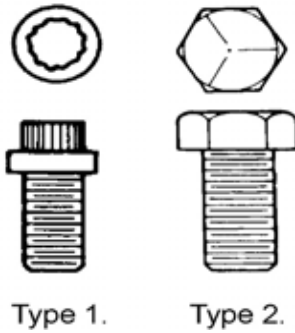


Type 1.      Type 2.

**UNIVERSAL JOINT CAP SCREWS (to suit HWD caps only)**

Series	Thread x Length	Type	Part No.	Notes	Torque Setting ft-lb (Nm)
<b>4C</b>	.312”-24 UNF x 1.50”				24-28 (30-37)
<b>5C</b>	.375”-24 UNF x 1.75”	2 (qty 8)	<b>114.6CBK</b>	114.5177	37-49 (949-1051)
<b>6C</b>	.375”-24 UNF x 1.75”	2 (qty 8)	<b>114.6CBK</b>	114.6128	37-49 (50-66)
<b>7C</b>	.500”-20 UNF x 2.00”	2 (qty 8)	<b>114.7CBK</b>	114.7126	65-75 (88-102)

**MECHANICS**

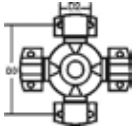
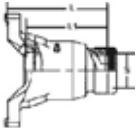

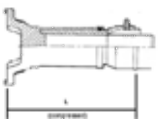


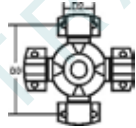
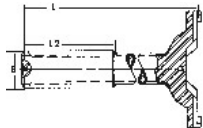


**UNIVERSAL JOINT CAP SCREWS (to suit HWD caps only)**

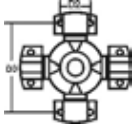


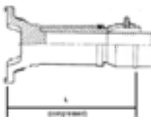
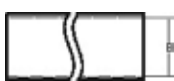

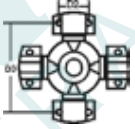
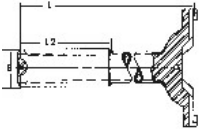
Series	Thread x Length	Type	Part No.	Notes	Torque Setting ft-lb (Nm)
8C	.500"-20 UNF x 2.00"	2 (qty 8)	<b>114.7CBK</b>	114.8113	65-75 (88-102)
8.5C	.500"-20 UNF x 2.25"	2 (qty 8)	<b>114.85CBK</b>	114.8516	110-120 (149-163)
8.5C	M12 x 1.75 x 63	2 (each)	<b>8.5C.73.1006M</b>		
9C	.500"-20 UNF x 2.25"	2 (qty 8)	<b>114.8.5CBK</b>	114.9016	110-120 (149-163)
9C	M12 x 1.75 x 63	2 (each)	<b>8.5C.73.1006M</b>		
9.5C	.500"-20 UNF x 2.50"	1 (each)	<b>9.5C.73.74569</b>	114.9500	110-120 (149-163)
10C	.625"-18 UNF x 3.25"	2 (each)	<b>10.5C.73.32104J</b>	114.10011	230-240 (313-326)
10C	M16 x 2 x 80	1 (each)	<b>10C.73.74613</b>	114.10011	230-240 (313-326)
10.5C	.625"-18 UNF x 3.25"	1(each)	<b>10.5C.73.32104J</b>	114.10500X	230-240 (313-326)
11C	.750"-16 UNF x 3.50"	1 (each)	<b>15C.73.73405</b>	114.11002	315-345 (428-469)
11C	M20 x 2.5 x 90	1 (each)	<b>15C.73.76818</b>	114.15003	315-345 (427-468)
12C	M14 x 1.5 x 80	1 (each)	<b>12C.73.76957</b>	114.12002	113-133 (154-180)
14C	M18 x 1.5 x 100	1 (each)	<b>14C.73.76000</b>	114.14000	248-295 (337-400)
14.5C	M22 x 1.5 x 105	2 (each)	<b>14.5C.73.2215105</b>	114.14500	464-550 (628-746)
15C	.750"-16 UNF x 3.50"	1 (each)	<b>15C.73.73405</b>	114.15002	315-345 (428-469)
15C	M20 x 2.5 x 90	1 (each)	<b>15C.73.76818</b>	114.15003	315-345 (427-468)
20C	M24 x 3.0 x 140	2 (each)	<b>20C.73.2430140</b>	114.20000	700-775 (949-1051)

**MECHANICS**

**STANDARD COMPONENTRY ASSEMBLED LENGTHS**

Series	Uni Joint 	Slip Yoke 	Stub 	Barrel 	Tube 	Weld Yoke 	Uni-Joint 	Lube for Life Universal Joints	
<b>4C</b>	114.4113 (36.52 x 87.32)	4C.3.400 (L=141.2)	4C.40.400 (L=146.1)	-	2.5 x .083 (B = 59.4)	4C.28.400 (L=31.8)	114.4113 (M/F to C = 15.5)		
<b>5C</b>	114.5177 (42.85 x 88.9)	-	-	5C.6.604 (L= 205.0)	60 x 4	5C.28.604 (L=45.0)	114.5177 (M/F to C = 17.5)		
<b>5C</b>	114.5177 (42.85 x 88.9)	5C.3.503 (L=200.0)	6C.40.604 (L=223.0)	-	* Machine butt to suit	5C.28.502 (L=46.7)	114.5177 (42.85 x 88.9)		
<b>6C</b>	114.6128 (42.85 x 114.3)	6C.3.604 (L=200.0)	6C.40.604 (L=223.0)	-	3.0 x .095 (B = 71.6)	6C.28.600 (L=48.0)	114.6128 (M/F to C = 17.5)	114.6128LFL	
<b>6C</b>	114.6128 (42.85 x 114.3)	-	-	6C.6.704 (L= 240.0)	70 x 4	6C.28.704 (L=50.0)	114.6128 (M/F to C = 17.5)	114.6128LFL	
<b>7C</b>	114.7126 (49.21 x 117.6)	7C.3.704 (L=200.0)	7C.40.703 (L=223.0)	-	3.5 x .134 (B =)	7C.28.702 (L=66.0)	114.7126 (49.21 x 117.6)	114.7126LFL	
<b>7C</b>	114.7126 (49.21 x 117.6)	-	-	7C.6.804 (L= 240.0)	80 x 4	7C.28.804 (L=55.0)	114.7126 (49.21 x 117.6)	114.7126LFL	
<b>8C</b>	114.8113 (49.21 x 174.63)	8C.3.800 (L=219.2)	8C.40.800 (L=254.0)	-	4.0 x .187 (B = 92.2)	8C.28.800 (L=68.3)	114.8113 (49.21 x 174.63)	114.8113LFL	
<b>8C</b>	114.8113 (49.21 x 174.63)	-	-	8C.6.904 (L= 350.0)	90 x 4	8C.28.904 (L=70.0)	114.8113 (49.21 x 174.63)	114.8113LFL	
<b>8.5C</b> J230 Twin Disk	114.8516 (71.44 x 123.83)	8.5C.3.850 (L=219.2)	6.40.541 (L=235.0)	-	4.0 x .134 (B =)	8.5C.28.851 (L=92.0)	114.8516 (71.44 x 123.83)	114.8516LFL	
<b>8.5C</b> J230 Twin Disk	114.8516 (71.44 x 123.83)	-	-	8.5C.6.1005 (L= 305.0)	100 x 5	8.5C.28.1005 (L=75.0)	114.8516 (71.44 x 123.83)	114.8516LFL	

# MECHANICS

Series	Uni Joint 	Slip Yoke 	Stub 	Barrel 	Tube 	Weld Yoke 	Uni-Joint 	Lube for Life Universal Joints	
<b>9C</b> J310 Twin Disk	114.9016 (71.44 x 168.3)	9C.3.901 (L=270.0)	6.5.40.191 (L= 284.2)	-	4.5 x .250 (B = 101.6)	9C.28.900 (L=63.5)	114.9016 (71.44 x 168.3)	114.9016LFL	9C.82.290 (L=290.0)
<b>9C</b> J310 Twin Disk	114.9016 (71.44 x 168.3)	-	-	9C.6.1106 (L= 320.0)	110 x 6	9C.28.1106 (L=65.0)	114.9016 (71.44 x 168.3)	114.9016LFL	
<b>10C</b>	114.10011 (92.07 x 165.1)	10C.3.1001 (L=304.8)	10C.40.1001 (L= 317.5)	10C.6.1001	5.0 x .375 (B = 108.0)	10C.28.1001 (L=88.9)	114.10011 (92.07 x 165.1)	114.10011LFL	
<b>10C</b>	114.10011 (92.07 x 165.1)	-	-	10C.6.1006 (L= 387.0)	140 x 5	10C.28.1006 (L=95.0)	114.10011 (92.07 x 165.1)		
<b>J490</b> Twin Disk	114.10033 (J490/10C Conv. joint)	10C.3.1001 (L=304.8)	10C.40.1001 (L= 317.5)	10C.6.1001	5.0 x .375 (B = 108.0)	10C.28.1001 (L=88.9)	114.10033 (J490/10C Conv. joint)		
<b>11C</b> J600 Twin Disk	114.11002 (88.9 x 172.72)	11C.3.1100 (L=336.6)	15C.40.1500 (L= 360.4)	11C.6.1100	6.5 x .375 (B = 146.1)	11C.28.1100 (L=88.9)	114.11002 (88.9 x 172.72)		
<b>11C</b> J600 Twin Disk	114.11002 (88.9 x 172.72)	-	-	11C.6.1106 (L= 395.0)	140 x 5	11C.28.1106 (L=108.5)	114.11002 (88.9 x 172.72)		
<b>12C</b>	114.12002 (99.2 x 241.3)	12C.3.1200 (L=349.3)	15C.40.1500 (L= 360.4)	-	6.5 x .375 (B = 146.1)	12C.28.1200 (L=101.6)	114.12002 (99.2 x 241.3)		
<b>14C</b>	114.14000 (134.88 x 269.5)	-	-	14C.6.1400		14C.28.1400	114.14000 (134.88 x 269.5)		
<b>15C</b> J800 Twin Disk	114.15002 (99.97 x 199.95)	15C.3.1500 (L=336.6)	15C.40.1500 (L= 360.4)	15C.6.1500	6.5 x .375 (B = 146.1)	15C.28.1500 (L=101.6)	114.15002 (99.97 x 199.95)	114.15002LFL	U.N.F
<b>15C</b> J800 Twin Disk	114.15002 (99.97 x 199.95)	-	-	15C.6.1504 (L=)	184 x 9.5	15C.28.1504 (L=)	114.15003 (99.97 x 199.95)	114.15003LFL	METRIC
<b>15C</b> J800 Twin Disk	114.15003 (99.97 X 199.95)	15C.3.1501 (L=336.6)	15C.40.1500 (L= 360.4)	-	6.5 x .375	15C.28.1501 (L=101.6)	114.15003 (99.97 X 199.95)	114.15003LFL	METRIC